

# Mounting Guide

## Setup & Mounting Video

Scan QR code or visit <https://www.tp-link.com/support/setup-video/>



\*Images may differ from actual products.

©2022 TP-Link 7106509826 REV1.1.0

## 1. Set Up Your Deco

Please remain online (Wi-Fi or mobile data) for Step 1.

1. Download the Deco app from App Store or Google Play and log in with your TP-Link ID.

Note: If you don't have an account, sign up first.



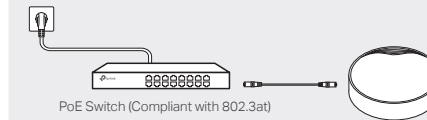
2. Follow the step-by-step instructions in the Deco app to set up your Deco.

## 2. Power Up your Deco

Deco can be powered via a power adapter or a PSE device (such as a PoE switch) which complies with Power Source Class 2 (PS2) or Limited Power Source (LPS) and Electrical Energy Source Class 1(ES1) of IEC 62368-1.

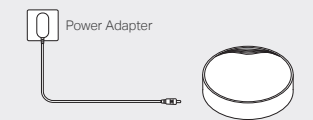
### Option 1: Via PoE Switch (Compliant with 802.3at)

Connect an Ethernet cable from the PoE switch (compliant with 802.3at) to the Deco's Ethernet port. The power should not be less than 18 W.



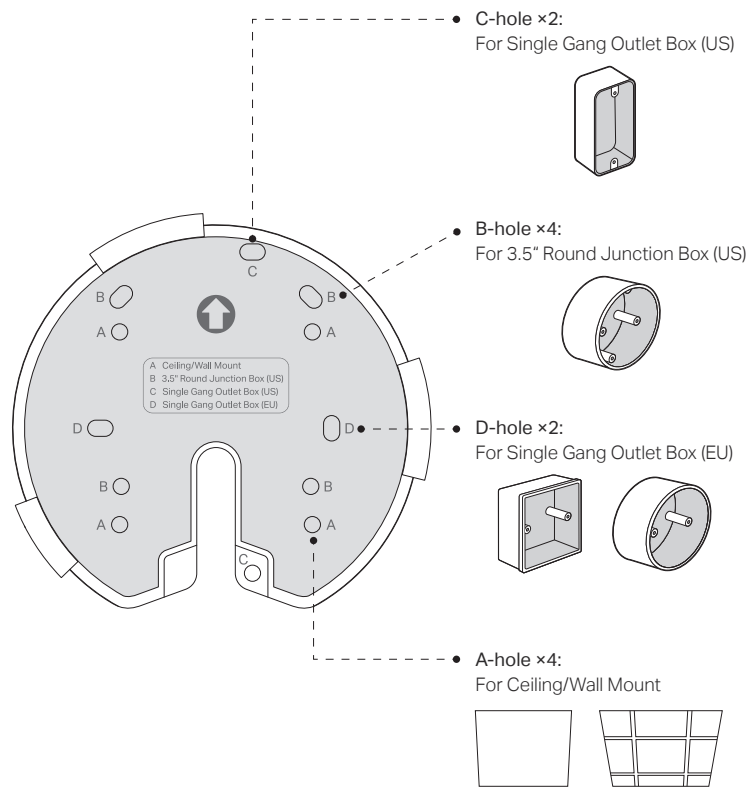
### Option 2: Via Power Adapter

Plug one end of the provided power adapter into the power port of the Deco and the other end to a standard electrical wall outlet.



## 3. Mount Your Deco

Deco can be mounted to a wall, ceiling, or junction box, using the provided screws. Choose an appropriate mounting method, then drill holes or mount directly with the provided mounting bracket.

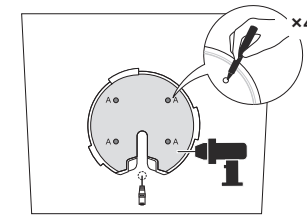
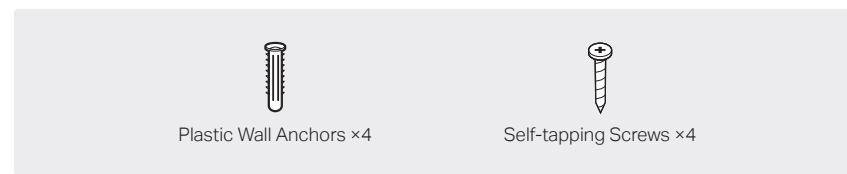


### Tools You Might Need

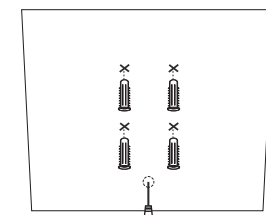
- Phillips screwdriver
- Drill and drill bit (6 mm for wall mounting or 4 mm for ceiling tile mounting)
- (Optional) Drywall or keyhole saw (to cut a 25 mm diameter hole for Ethernet cable feed)
- Cat5/6 UTP cable for indoor installations

### Option 1: On the Wall/Ceiling

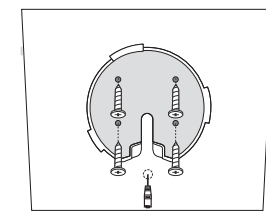
The Deco can be mounted to the wall or the ceiling with the screws in the package.



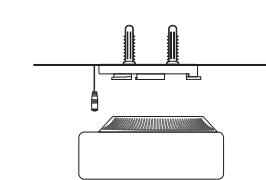
**1** If your Ethernet cable feeds through the wall, position the mounting bracket above the cable hole. Mark four positions for the screw holes and drill four 6 mm (15/64 in) diameter holes at the marked positions.



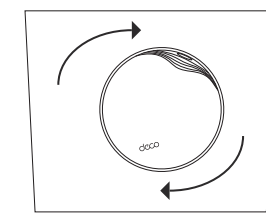
**2** Insert the plastic wall anchors into the 6 mm diameter holes.



**3** Secure the mounting bracket to the wall by driving the self-tapping screws into the anchors. Make sure the mounting bracket lies flat against the surface.



**4** Connect the Ethernet cable to the Ethernet port on the Deco.

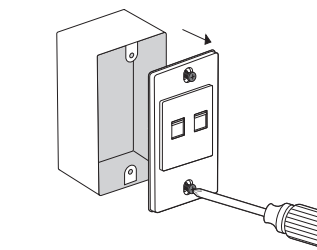
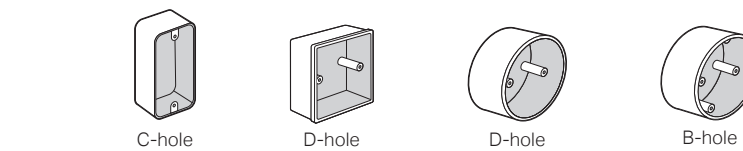


**5** Orient the Deco LED according to the image, attach the Deco to the mounting bracket, then rotate it clockwise until it locks into place.

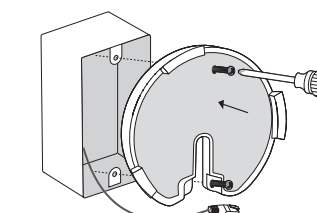
### Option 2: On a Wall Junction Box

The Deco can be mounted on a junction box. The junction box should be pre-installed with a running-in-wall Ethernet cable. Ensure that the mounting holes align to your junction box.

\*Here the standard US wall junction box is used as an example.



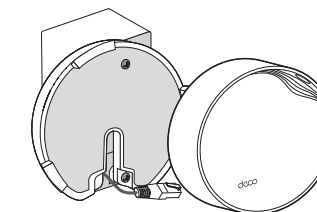
**1** Detach the faceplate of the junction box with a Phillips screwdriver.



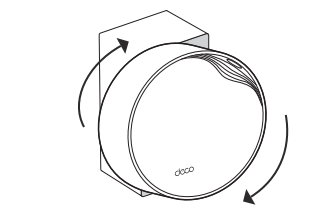
**2** Feed the Ethernet cable through the mounting bracket. Insert the enclosed screws and tighten them with a Phillips screwdriver to secure the mounting bracket.

**Notes:**

- Do not over tighten the screws.
- If the enclosed screws do not fit the junction box, use the screws attached to the junction box instead.



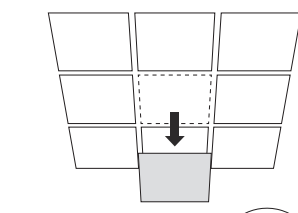
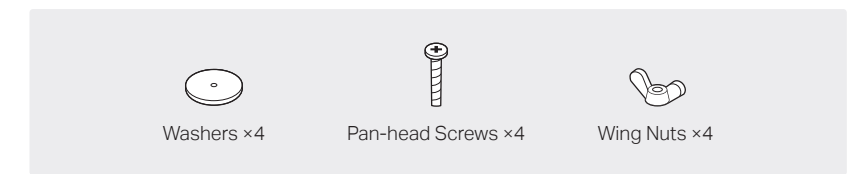
**3** Connect the Ethernet cable to the Ethernet port on the Deco.



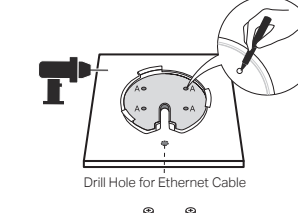
**4** Orient the Deco LED according to the image, attach the Deco to the mounting bracket, then rotate it clockwise until it locks into place.

### Option 3: In a Ceiling Tile

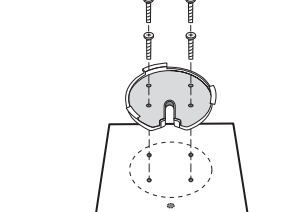
The Deco can be installed in a ceiling tile with the screws in the package. Make sure the ceiling tile is larger than the Deco.



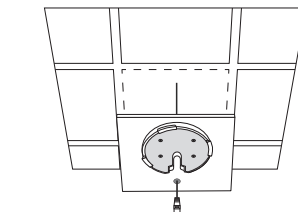
**1** Remove the ceiling tile.



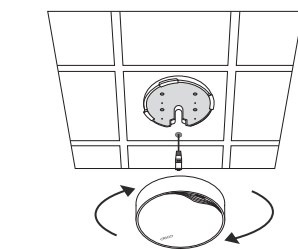
**2** Place the mounting bracket in the center of the ceiling tile. Mark four positions for the screw holes and a location for the Ethernet cable hole. Drill four 4 mm (5/32 in) diameter holes for the screws and a 25 mm (63/64 in) diameter hole for the Ethernet cable at the marked positions.



**3** Secure the mounting bracket to the ceiling tile using four pan-head screws, washers, and wing nuts.



**4** Feed the Ethernet cable through the hole and set the ceiling tile back into place.



**5** Connect the Ethernet cable to the Ethernet port on the Deco. Orient the Deco LED according to the image, attach the Deco to the mounting bracket, then rotate it clockwise until it locks into place.