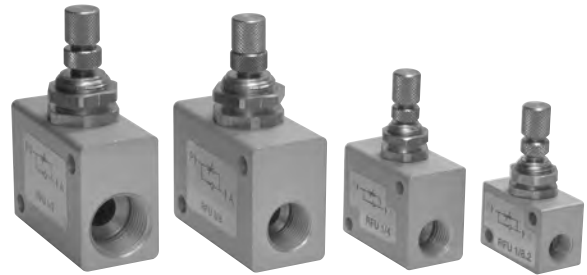


Flow regulators



- Uni-directional and bi-directional flow regulators
- Threaded ports from M5 to 1/2" NPT
- In-line or panel mounting
- Version for precision regulation



Materials

Body: aluminium 11S

Spring: stainless steel

Seals: NBR

Internal parts: brass OT58

Uni-directional flow regulators

Model		RFU M5	USRFU 1/8.1	USRFU 1/8.2 USRFUM 1/8	USRFU 1/8.3	USRFU 1/4 USRFUM 1/4	USRFU 3/8	USRFU 1/2	USRFP 1/8.2	
Ports		M5	1/8" NPT	1/8" NPT	1/8" NPT	1/4" NPT	3/8" NPT	1/2" NPT	1/8" NPT	
Nominal diameter	1-2	1.2 mm	1.2 mm	2 mm	3.2 mm	3.5 mm	7 mm	7 mm	2 mm	
	2-1	2.2 mm	4.2 mm	4.2 mm	4.2 mm	6.5 mm	10 mm	11 mm	4.2 mm	
Nominal flow rate at 6 bar (87 PSI)	1-2	60 NI/min (0.06 Cv) 130 NI/min (0.14 Cv)	60 NI/min (0.06 Cv) 450 NI/min (0.48 Cv)	120 NI/min (0.13 Cv) 450 NI/min (0.48 Cv)	210 NI/min (0.22 Cv) 450 NI/min (0.48 Cv)	300 NI/min (0.32 Cv) 600 NI/min (0.63 Cv)	600 NI/min (0.63 Cv) 1100 NI/min (1.16 Cv)	600 NI/min (0.63 Cv) 1400 NI/min (1.48 Cv)	120 NI/min (0.13 Cv) 450 NI/min (0.48 Cv)	
	2-1									
Temperature range		-15 + 60°C (5-140°F)								
Working pressure		2 ... 10 bar (30 ... 145 PSI) 0.2 ... 1 MPa							0.5 ... 10 bar (7 ... 145 PSI) 0.05 ... 1 MPa	
Fluid		50µ filtered, lubricated or non lubricated air								

Bi-directional flow regulators

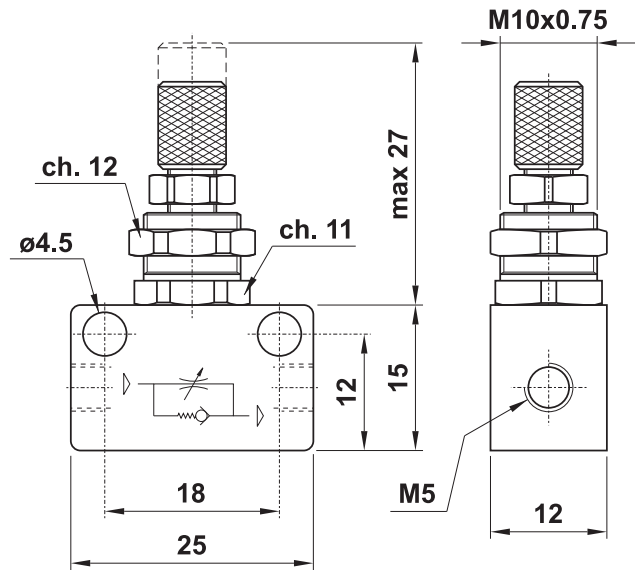
Model	RFB M5	USRFB 1/8	USRFB 1/4	USRFB 3/8	USRFB 1/2
Ports	M5	1/8" NPT	1/4" NPT	3/8" NPT	1/2" NPT
Nominal diameter	1.2 mm	3.2 mm	3.5 mm	7 mm	7 mm
Nominal flow rate at 6 bar (87 PSI)	60 NI/min (0.06 Cv)	210 NI/min (0.22 Cv)	300 NI/min (0.32 Cv)	500 NI/min (0.53 Cv)	500 NI/min (0.53 Cv)
Temperature range	-15 + 60°C (5-140°F)				
Operating pressure	max 10 bar (145 PSI) max 1 MPa				
Fluid	50µ filtered, lubricated or non lubricated air				

Uni-directional flow regulators

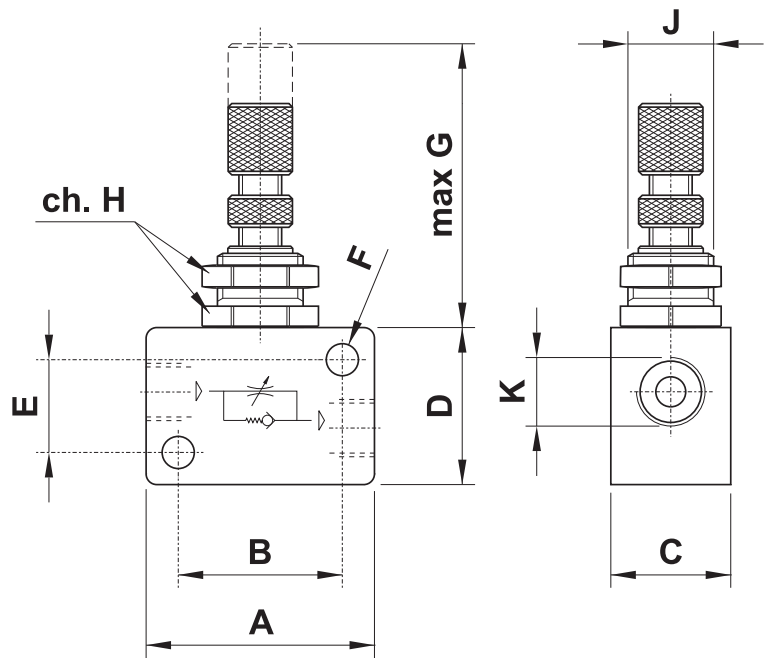


M5

RFU M5



1/8" NPT
1/4" NPT
3/8" NPT
1/2" NPT



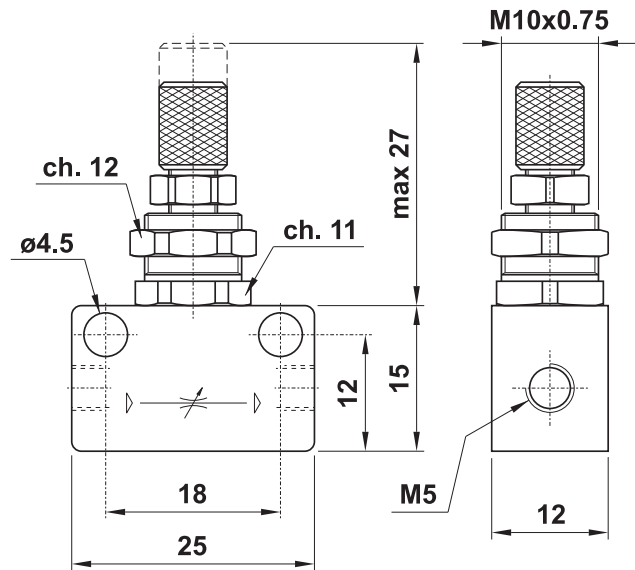
Model	A	B	C	D	E	F	G	H	J	K
USRFU 1/8.1 USRFU 1/8.2 USRFU 1/8.3	32	23	16.8	22	13	$\phi 4.5$	35	15	M12x0.75	1/8" NPT
USRFU 1/4	40	30	22	32	22	$\phi 4.5$	35	15	M12x0.75	1/4" NPT
USRFU 3/8	56	43	27	42	27	$\phi 6.5$	43	24	M18x1	3/8" NPT
USRFU 1/2	56	43	27	42	27	$\phi 6.5$	43	24	M18x1	1/2" NPT

Bi-directional flow regulators

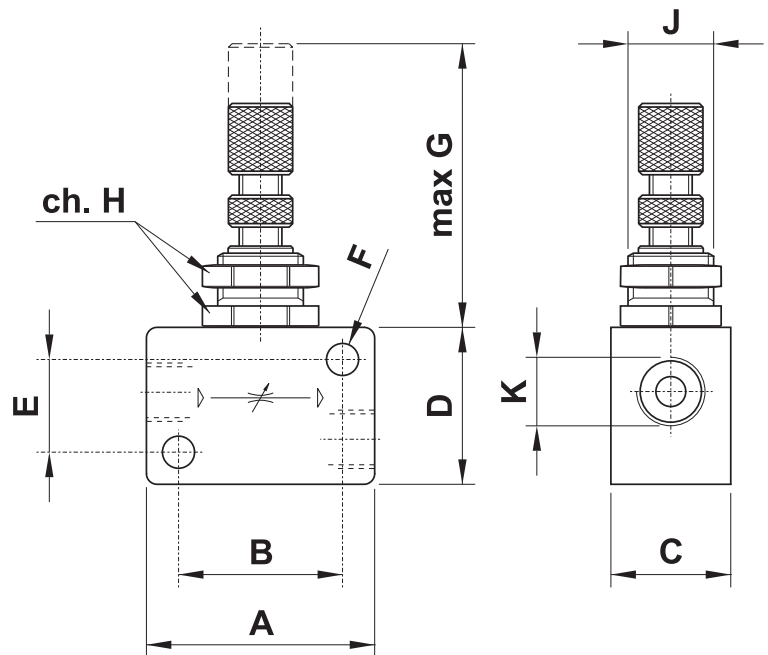


M5

USRFB M5



1/8" NPT
1/4" NPT
3/8" NPT
1/2" NPT



Model	A	B	C	D	E	F	G	H	J	K
USRFB 1/8	32	23	16.8	22	13	$\phi 4.5$	35	15	M12x0.75	1/8" NPT
USRFB 1/4	40	30	22	32	22	$\phi 4.5$	35	15	M12x0.75	1/4" NPT
USRFB 3/8	56	43	27	42	27	$\phi 6.5$	43	24	M18x1	3/8" NPT
USRFB 1/2	56	43	27	42	27	$\phi 6.5$	43	24	M18x1	1/2" NPT

- Threaded ports female-female and male-female
- From M5 to 1/4" NPT
- Nickel plated valve body on request
- Viton seals for higher temperatures



Materials

Body: brass OT58

Spring: stainless steel

Seals: NBR

Internal parts: brass OT58

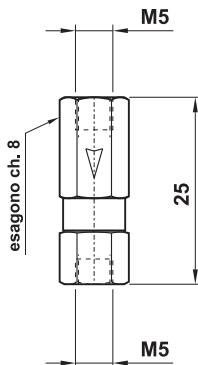
Model	USVNR 1/8 FF	USVNR 1/4 FF	VNR M5 FF	
Ports	1/8" NPT	1/4" NPT	M5	
Nominal orifice	5.2 mm	7 mm	2.2 mm	
Nominal flow rate at 6 bar (87 PSI)	500 NI/min (0.53 Cv)	900 NI/min (0.95 Cv)	100 NI/min (0.10 Cv)	
Temperature range	-15+60°C (5-140°F) VITON: max +110°C (230°F)			
Operating pressure	2 ... 10 bar (30 ... 145 PSI) 0.2 ... 1 MPa			
Fluid	50µ filtered, lubricated or non lubricated air			

Check Valves



VNR M5 FF

check valve female-female M5

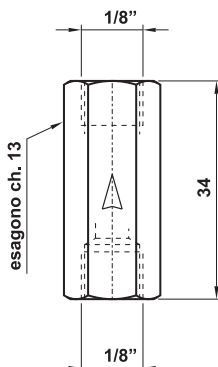


Available versions

code	description
11.010.4	standard: valve body in brass, seals in NBR
11.011.4	valve body in brass, seals in NBR, without spring
11.024.4	valve body in nickel plated brass, seals in NBR
11.046.4	valve body in brass, seals in VITON
11.050.4	valve body in nickel plated brass, seals in VITON

USVNR 1/8 FF

check valve female-female 1/8" NPT

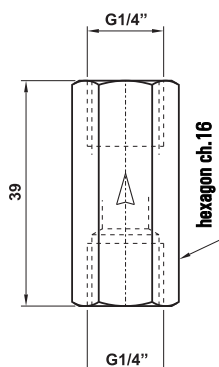


Available versions

code	description
US11.000.4	standard: valve body in brass, seals in NBR
US11.002.4	valve body in brass, seals in VITON
US11.004.4	valve body in nickel plated brass, seals in NBR
US11.009.4	valve body in brass, seals in SILICON
US11.027.4	valve body in brass, seals in NBR, without spring
US11.031.4	valve body in nickel plated brass, seals in VITON
US11.035.4	valve body in brass, seals in NBR, light duty spring
US11.034.4	valve body in brass, seals in VITON, light duty spring

USVNR 1/4 FF

non-return valve female-female 1/4" NPT



Available versions

code	description
US11.001.4	standard: valve body in brass, seals in NBR
US11.003.4	valve body in brass, seals in VITON
US11.005.4	valve body in nickel plated brass, seals in NBR
US11.030.4	valve body in nickel plated brass, seals in VITON
US11.028.4	valve body in brass, seals in NBR, without spring
US11.037.4	valve body in brass, seals in VITON, without spring
US11.036.4	valve body in brass, seals in NBR, light duty spring
US11.033.4	valve body in brass, seals in VITON, light duty spring
US11.040.4	valve body in brass, seals in VITON, heavy duty spring

- Wide range
- Small dimensions
- Mountable on bracket
- M5 threaded ports or push-in fittings for 5/32" or $\varnothing 4$ tube



Materials

Body: aluminium 11S

Springs: stainless steel

Seals: NBR

Internal parts: brass OT58

Nominal diameter	2.5 mm (0.1 in)
Nominal flow rate at 6 bar (87 PSI)	100 NI/min (0.10 Cv)
Temperature range	-15 + 60°C (5-140°F)
Operating pressure	2 ... 10 bar (30 ... 145 PSI) 0.2 ... 1 MPa
Fluid	50 μ filtered, lubricated or non lubricated air

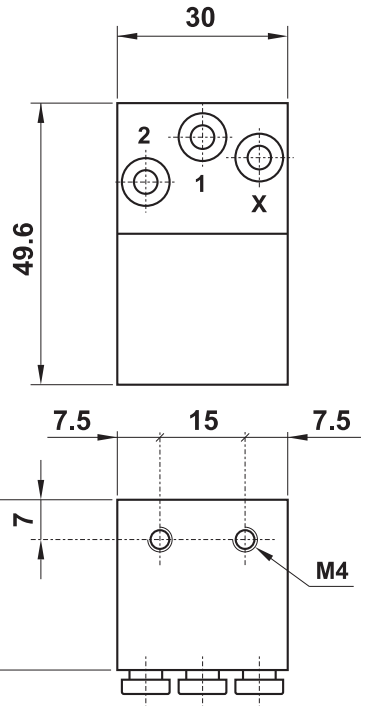
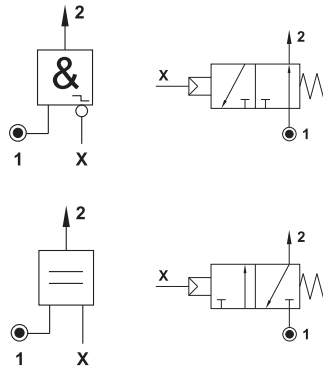


08.039.4 - NOT FOR LOGIC

NOT element, push-in fittings for 5/32" or ø4 tube, mountable on bracket

08.049.4 - YES FOR LOGIC

YES element, push-in fittings for 5/32" or ø4 tube, mountable on bracket



Actuating pressure at 6 bar (87 PSI)

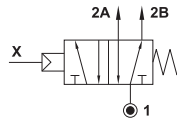
08.039.4 : 1.2 bar (17 PSI)

08.049.4 : 1 bar (14 PSI)



04.003.4 - MEMORY C/M

mono-stable MEMORY element, push-in fittings for 5/32" ø4 tube



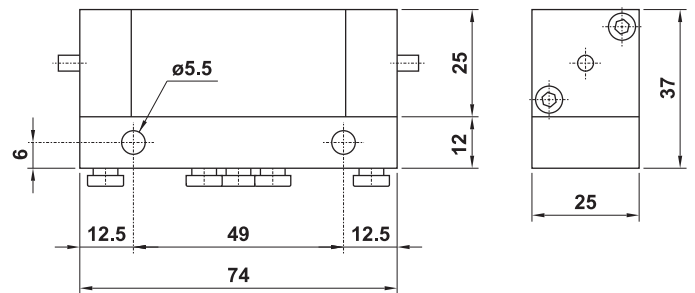
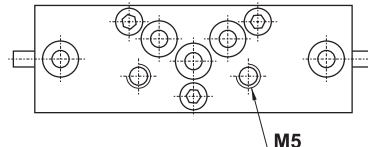
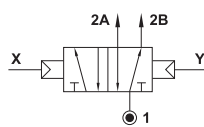
Actuating pressure at 6 bar (87 PSI)

04.002.4 : 1.5 bar (21 PSI)

04.003.4 : 2 bar (30 PSI)

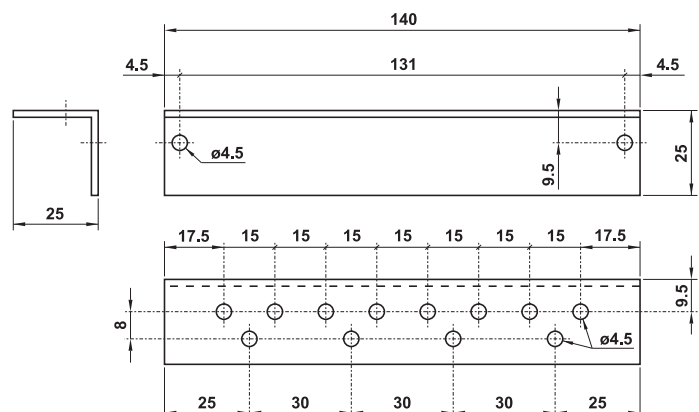
04.002.4 - MEMORY C/C

bi-stable MEMORY element, push-in fittings for 5/32" or ø4 tube

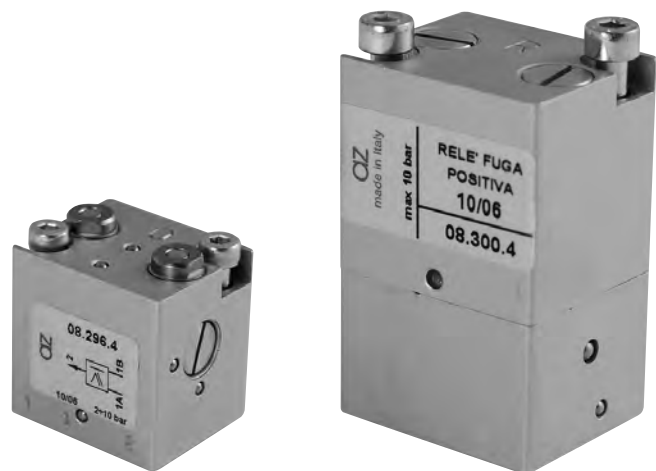


08.092.1 - MOUNTING BRACKET

mounting bracket for logic elements



- Wide range
- Small dimensions
- Mountable on sub-base (single or multiple)



Materials

Body: aluminium 11S

Springs: stainless steel

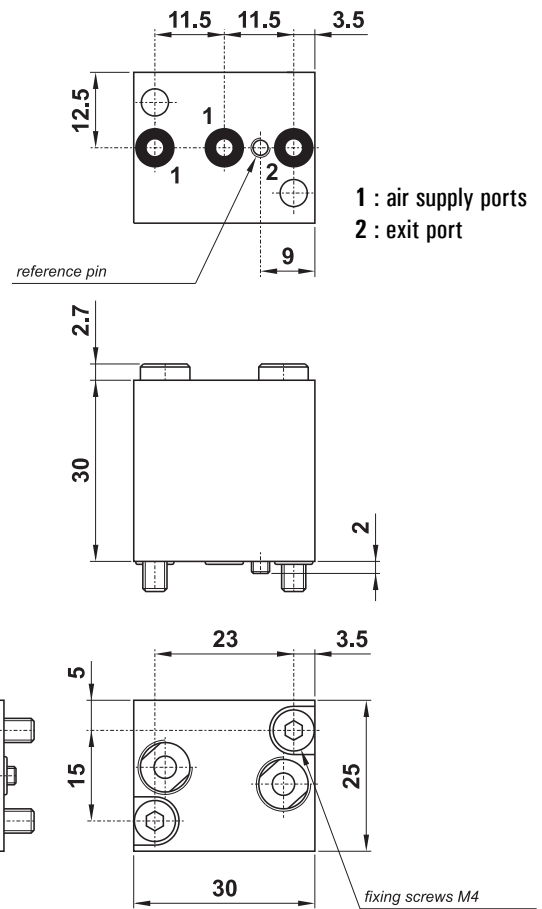
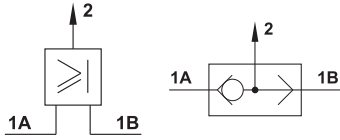
Seals: NBR

Internal parts: brass OT58

Nominal diameter	2.5 mm (0.1 in)
Nominal flow rate at 6 bar (87 PSI)	100 NI/min (0.1 Cv)
Temperature range	-15 +60°C (5-140°F)
Operating pressure	2 ... 10 bar (30 ... 145 PSI) 0.2 ... 1 MPa
Actuating pressure at 6 bar (87 PSI) (NOT and YES)	1.5 bar (22 PSI) 0.15 MPa
Fluid	50µ filtered, lubricated or non lubricated air

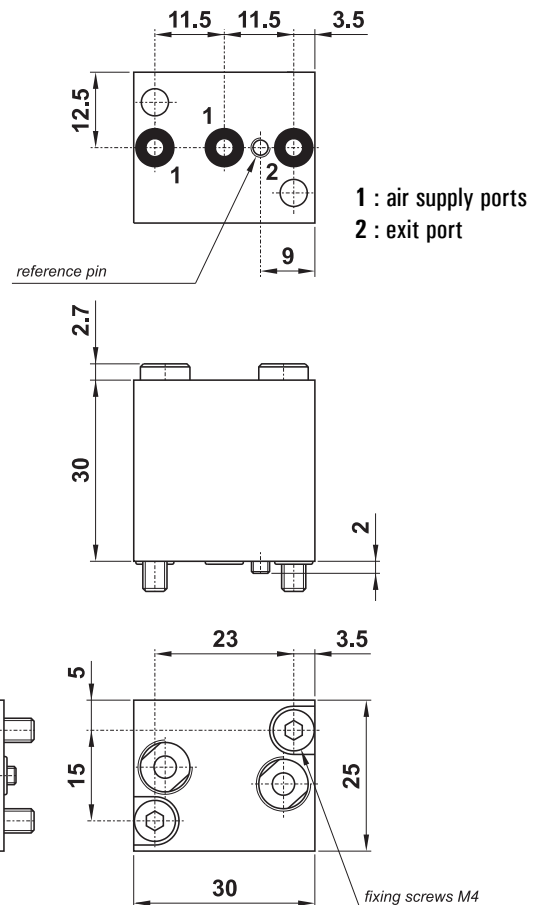
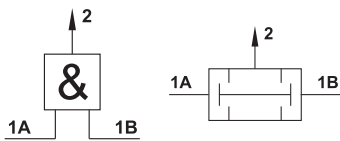
08.296.4 - OR FOR LOGIC CR

OR element, for assembling on sub-base



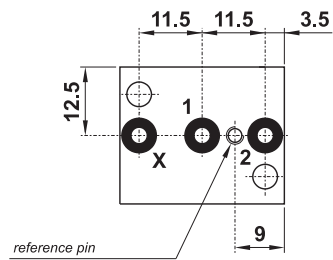
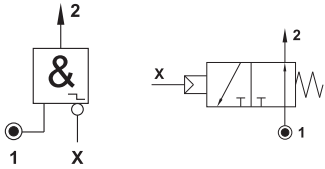
08.297.4 - AND FOR LOGIC CR

AND element, for assembling on sub-base

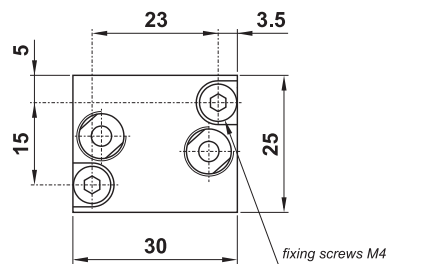
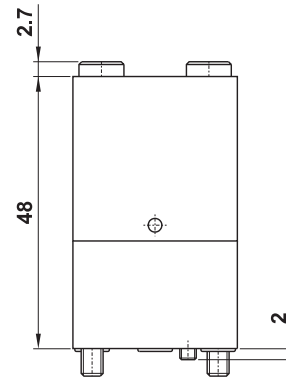


08.298.4 - NOT FOR LOGIC CR

NOT element, for assembling on sub-base

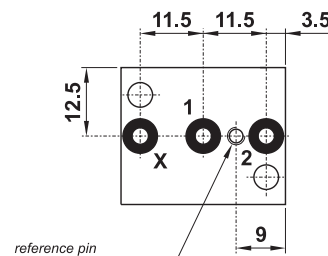
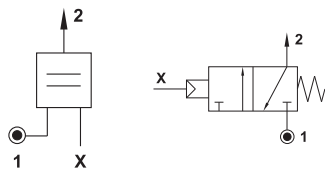


1 : air supply port
2 : exit port
X : signal port

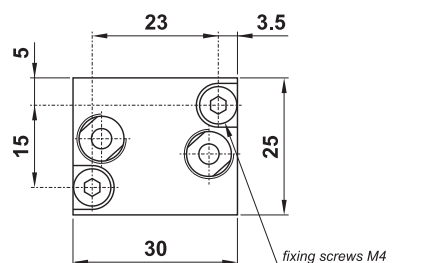
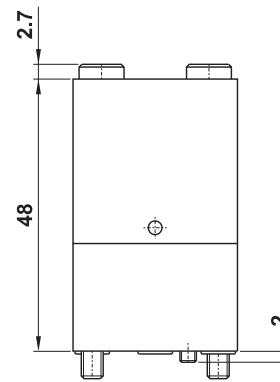


08.299.4 - YES FOR LOGIC CR

YES element, for assembling on sub-base

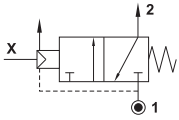


1 : air supply port
2 : exit port
X : signal port

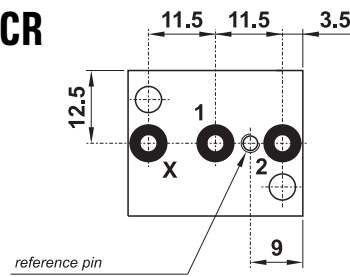


08.300.4 - SWITCH WITH INHIBITION EXHAUST CR

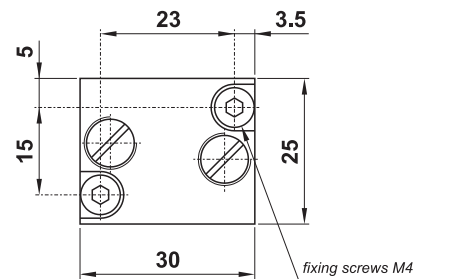
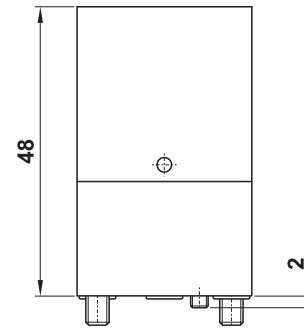
SWITCH WITH INHIBITION EXHAUST, for assembling on sub-base



When exhaust is inhibited, the valve switches and air goes out from exit port 2.

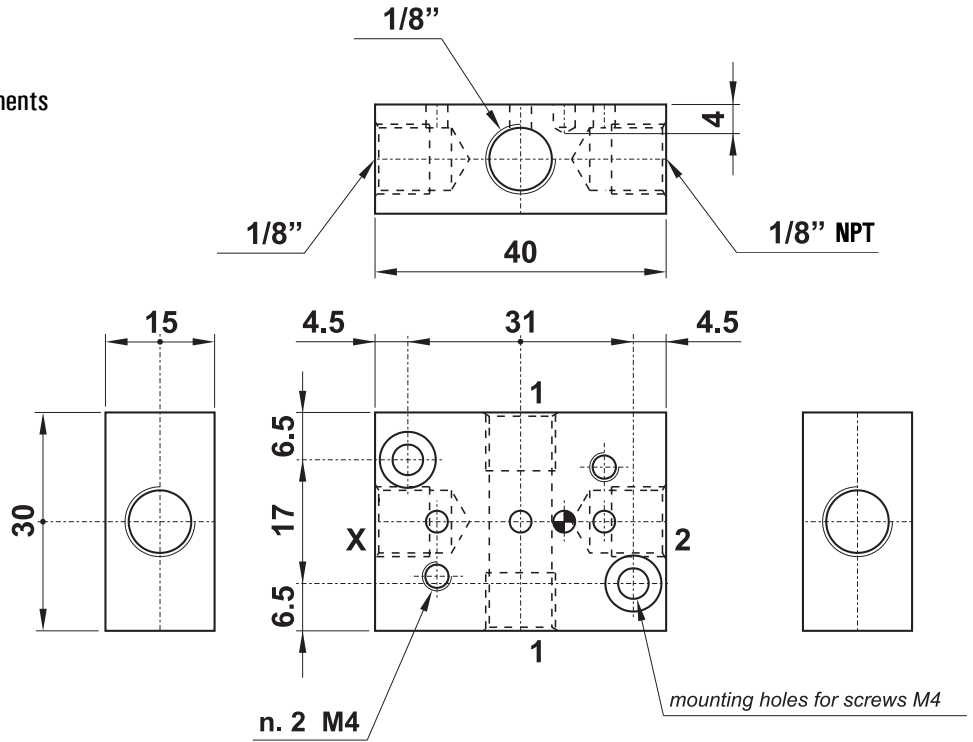


1 : air supply port
2 : exit port
X : exhaust port



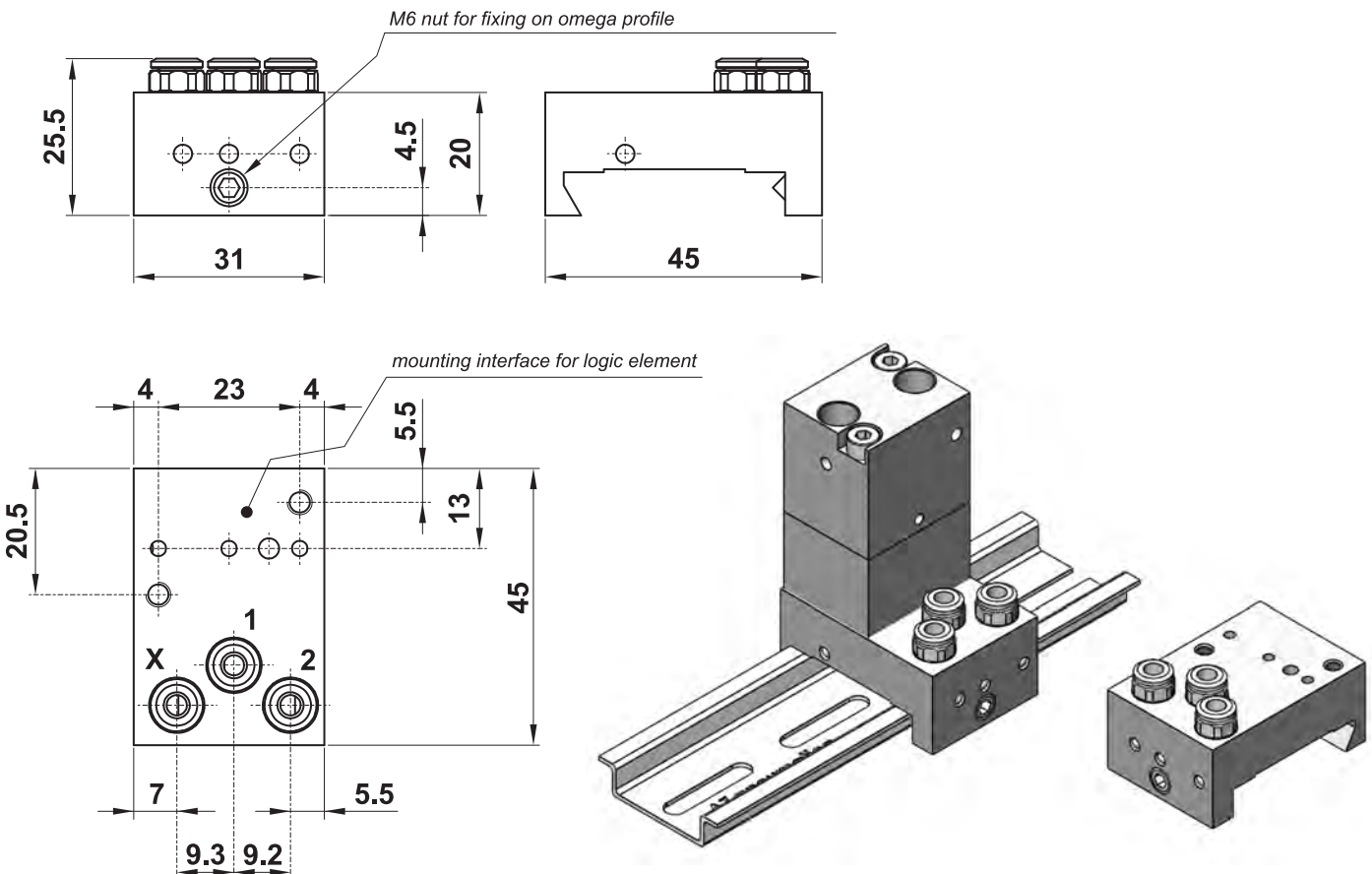
USAQ.015.1

Single sub-base for assembling of CR logic elements



08.039.3

Single sub-base for assembling of CR logic elements on omega profile
push-in fittings for 5/32" or ø4 tube



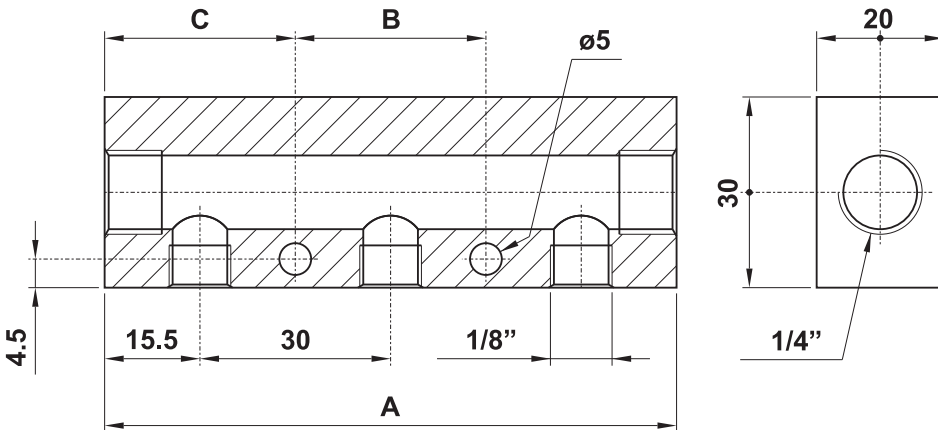
Distribution manifolds



- In-line manifolds with 1/8" NPT or 1/4" NPT user ports
- Four port manifolds
- Special manifolds on request
- Material: aluminium (anodize treatment)

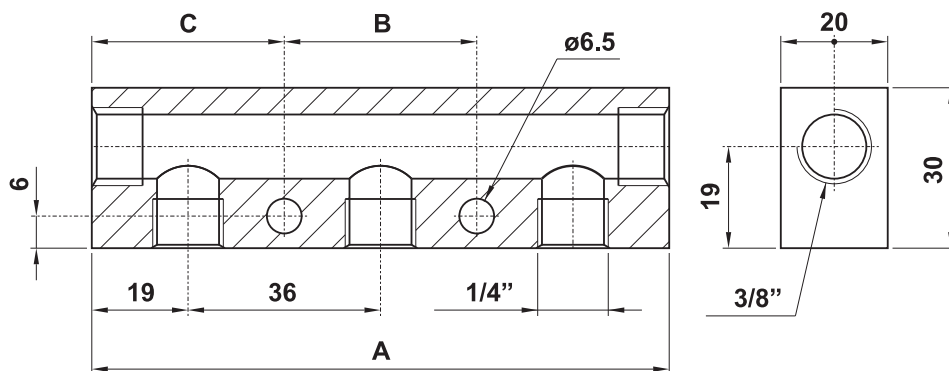


In-line manifolds with 1/8" NPT user ports and 1/4" NPT feed ports



model	no. ports	A	B	C
USAU.002.1	2	61	50	5.5
USAU.003.1	3	91	30	30.5
USAU.004.1	4	121	60	30.5
USAU.005.1	5	151	90	30.5
USAU.006.1	6	181	120	30.5

In-line manifolds with 1/4" NPT user ports and 3/8" NPT feed ports

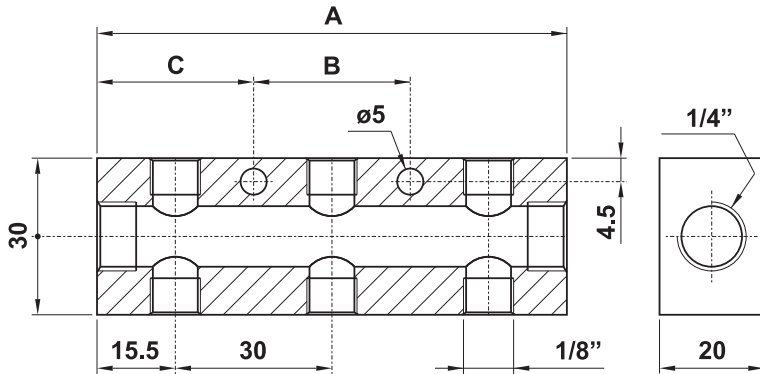


model	no. ports	A	B	C
USAU.011.1	2	74	61	6.5
USAU.013.1	3	110	36	37
USAU.014.1	4	146	72	37
USAU.015.1	5	182	108	37
USAU.016.1	6	218	144	37

Distribution Manifolds

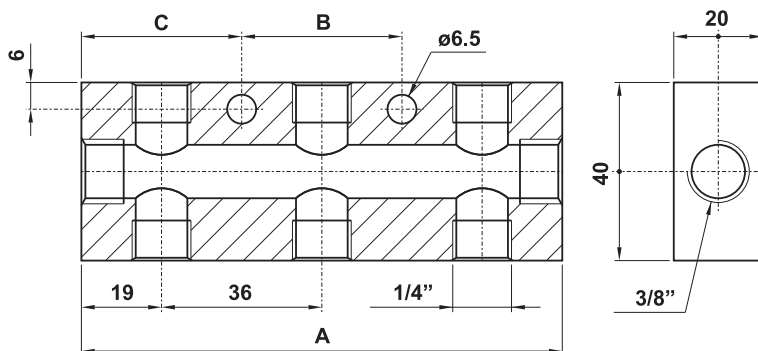


In-line double manifolds with 1/8" NPT user ports and 1/4" NPT feed ports



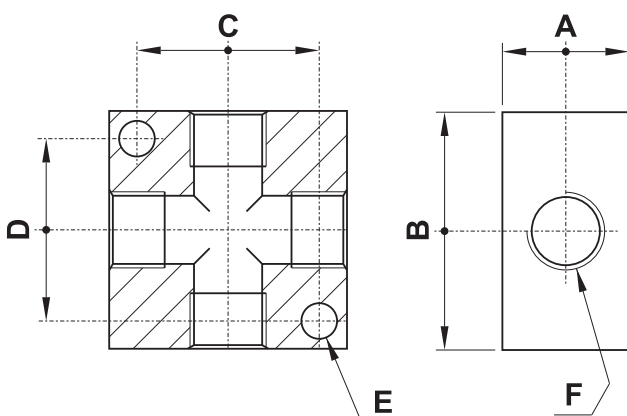
model	no. ports	A	B	C
USAU.000.1	2	61	50	5.5
USAU.001.1	3	91	30	30.5
USAU.008.1	4	121	60	30.5
USAU.009.1	5	151	90	30.5

In-line double manifolds with 1/4" NPT user ports and 3/8" NPT feed ports



model	no. ports	A	B	C
USAU.022.1	2	74	61	6.5
USAU.023.1	3	110	36	37
USAU.024.1	4	146	72	37
USAU.025.1	5	182	108	37
USAU.027.1	6	218	144	37

Four Port Manifolds



model	A	B	C	D	E	F
AU.017.1	10	20	12	12	4.5	M5
USAU.018.1	16	30	23	22	4.5	1/8" NPT
USAU.019.1	20	40	30	27	5.5	1/4" NPT
USAU.021.1	25	50	38	39	6.5	3/8" NPT
USAU.020.1	25	50	38	39	6.5	1/2" NPT