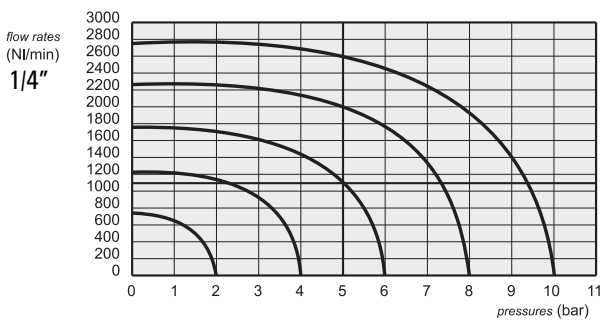
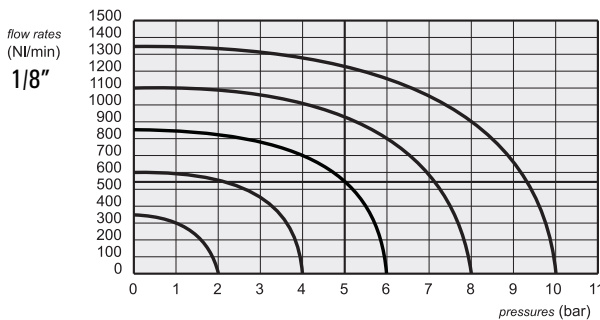


Manually actuated valves



- 3/2-5/2-5/3 spool valves with 1/8" - 1/4" - 1/2" NPT threaded ports, BSP version available on request
- Installation in any position
- Comprehensive range of actuations
- Push/pull and lever valves: thread for panel mounting M18x1.5
- Version for actuator for panel mounting (with $\phi 22$ hole)
- Special versions on request



Materials

Body: aluminium 11S

End cups: aluminium 11S

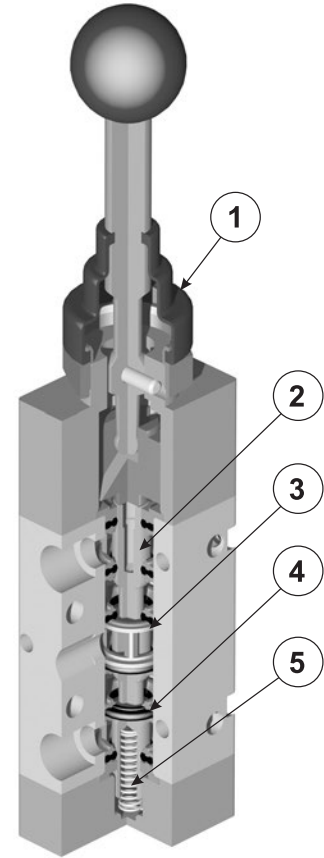
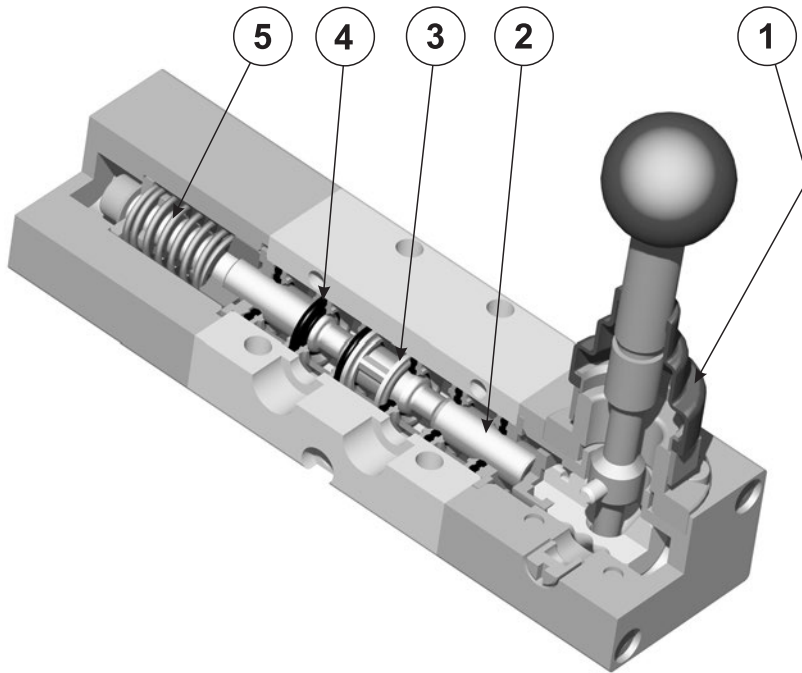
Springs: stainless steel

Seals: NBR

Spool: nickel plated aluminium

Internal parts: brass OT58

Nominal diameter	1/8" NPT: 5 mm 1/4" NPT: 7.5 mm			
Temperature range	max +60°C (140°F)			
Operating pressure	direct actuation -0.9 ... 10 bar (Vacuum ... 145 PSI) -0.09 ... 1 MPa		servo-piloted actuation 2.5 ... 10 bar (36 ... 145 PSI) 0.025 ... 1 MPa	
Actuating force	1/8" NPT mono-stable	1/4" NPT mono-stable	1/8" NPT bi-stable	1/4" NPT bi-stable
	15 N	20 N	10 N	15 N
Fluid	50 μ filtered, lubricated or non lubricated air			



- 1. Cover for dust protection
- 2. Spool: aluminium 11S, nickered
- 3. Spacer: brass
- 4. Seal for spool: NBR
- 5. Spring: steel

code of kit	suitable for		
00.099.2	US321 LL	US321 LL90	US321 ML90
	US321 TT	US321 MT	
00.106.2	US521 LL	US521 LL90	US521 ML90
	US5213C LL90	US5213A LL90	US5213P LL90
	US5213C ML90	US5213A ML90	US5213P ML90
	US521 TT	US521 MT	
01.041.2	US322 LL	US322 LL90	US322 ML90
	US322 TT	US322 MT	
01.054.2	US522 LL	US522 LL90	US522 ML90
	US5223C LL90	US5223A LL90	US5223P LL90
	US5223C ML90	US5223A ML90	US5223P ML90
	US522 TT	US522 MT	

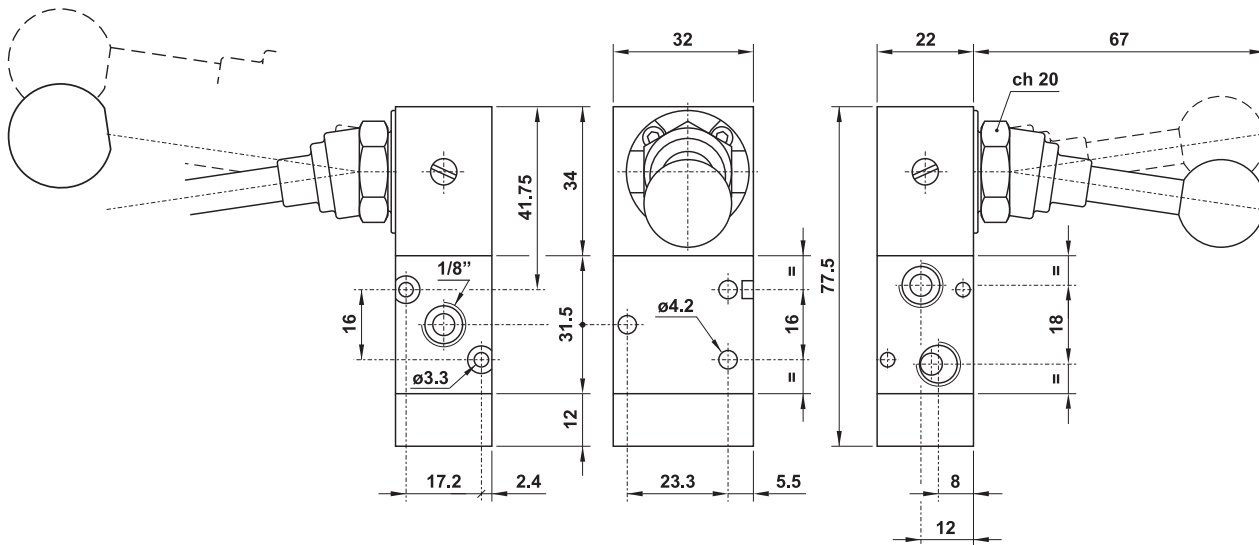
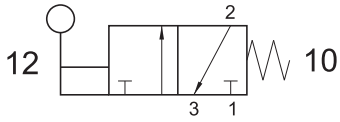
The kit contains the seals listed here and the necessary O-Rings for the functioning of the valve.

Manually actuated valves - 1/8"



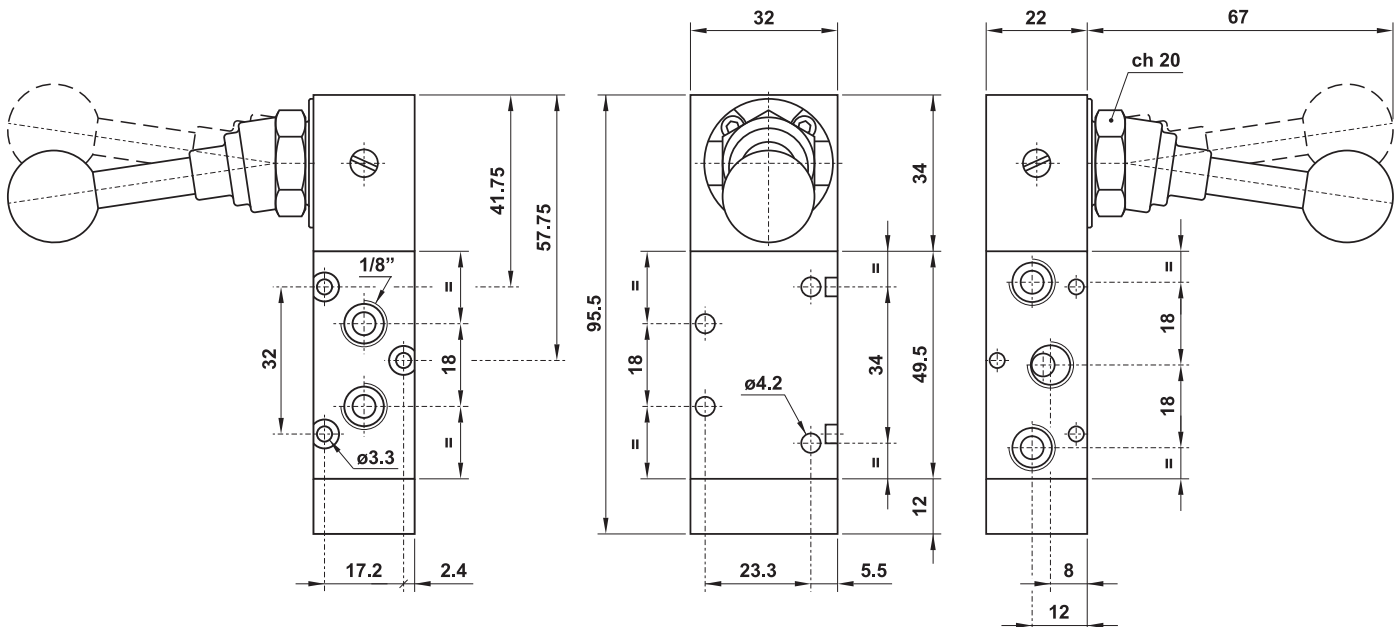
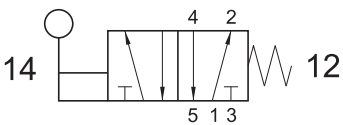
US321 ML90

3/2 1/8" NPT 90° lever - spring return



US521 ML90

5/2 1/8" NPT 90° lever - spring return

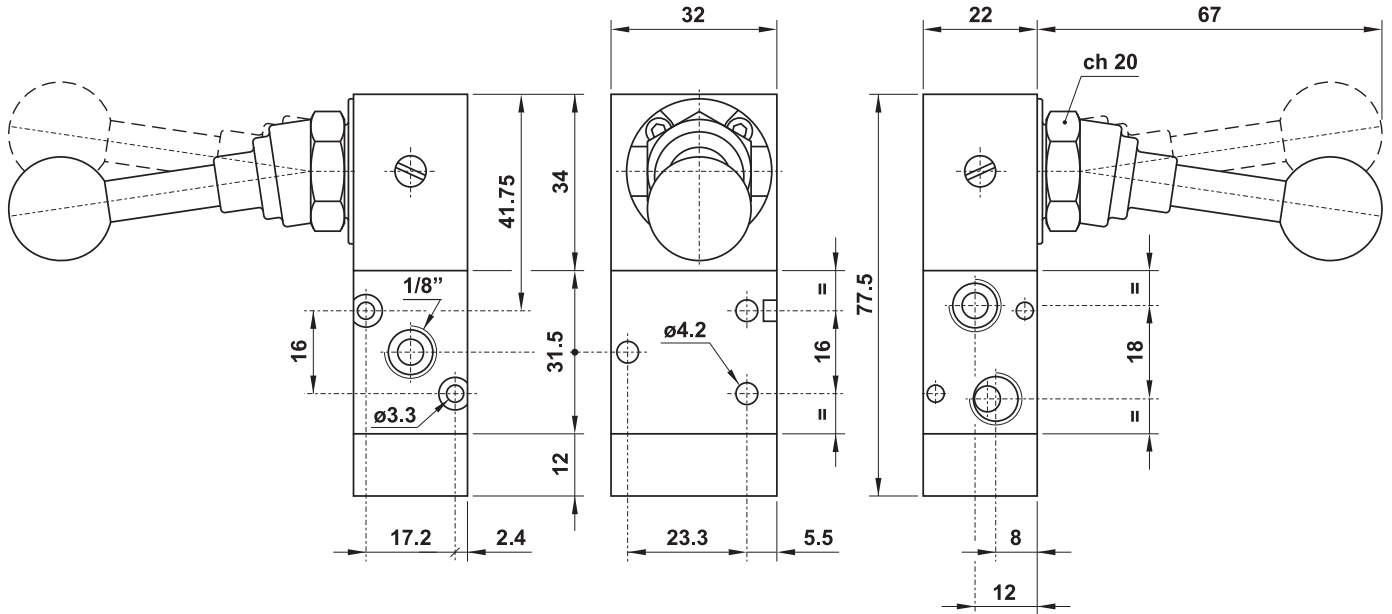
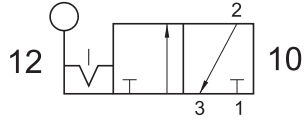


Manually actuated valves - 1/8"



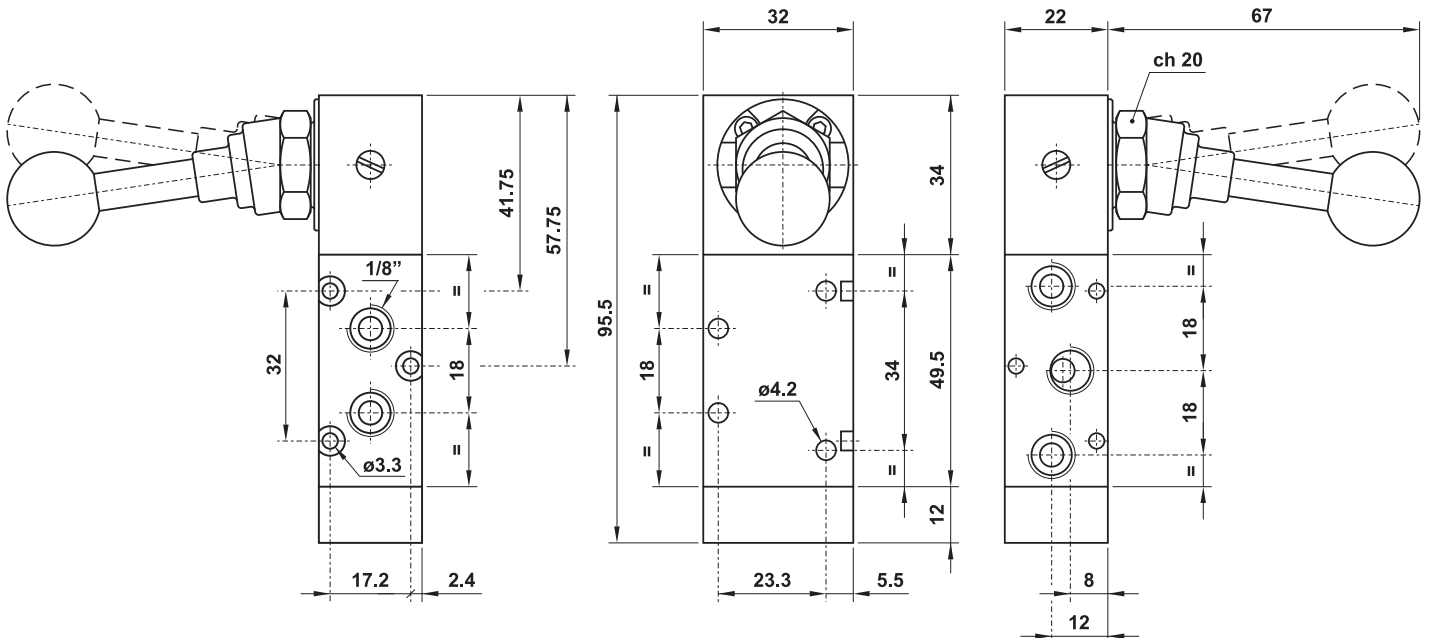
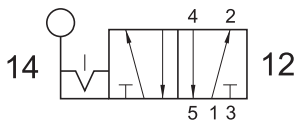
US321 LL90

3/2 1/8" NPT 90° bi-stable lever



US521 LL90

5/2 1/8" NPT 90° bi-stable lever

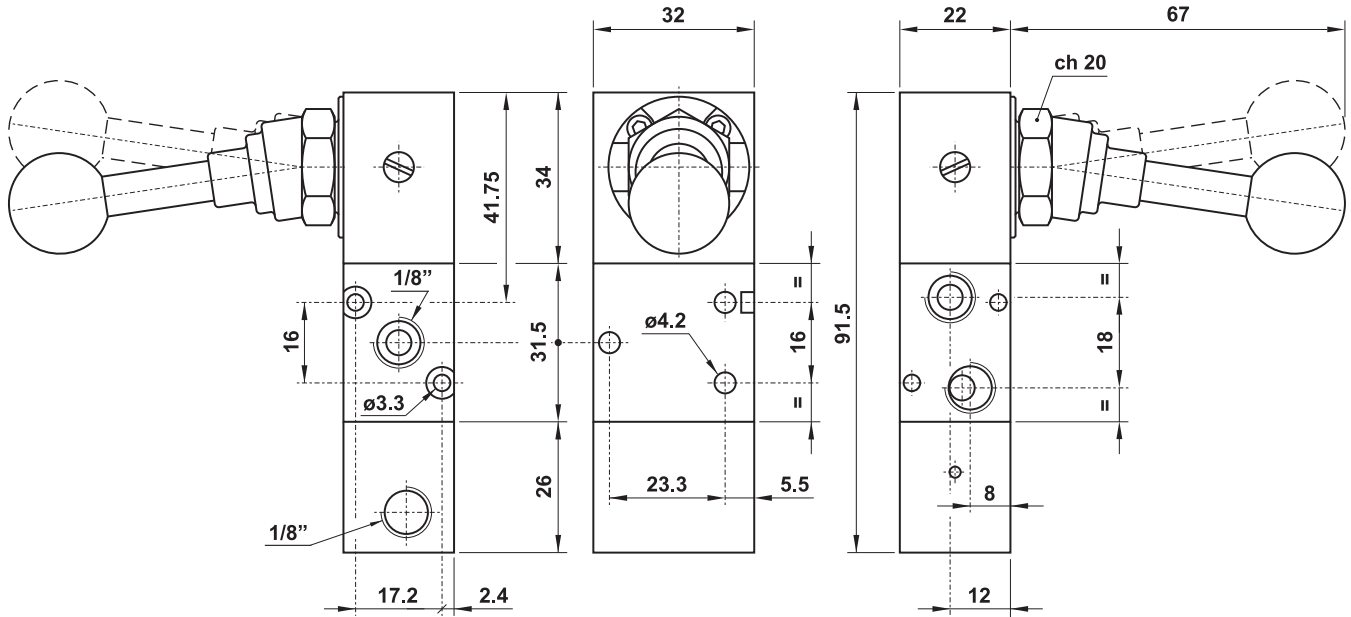
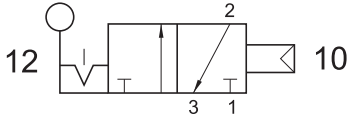


Manually actuated valves - 1/8"



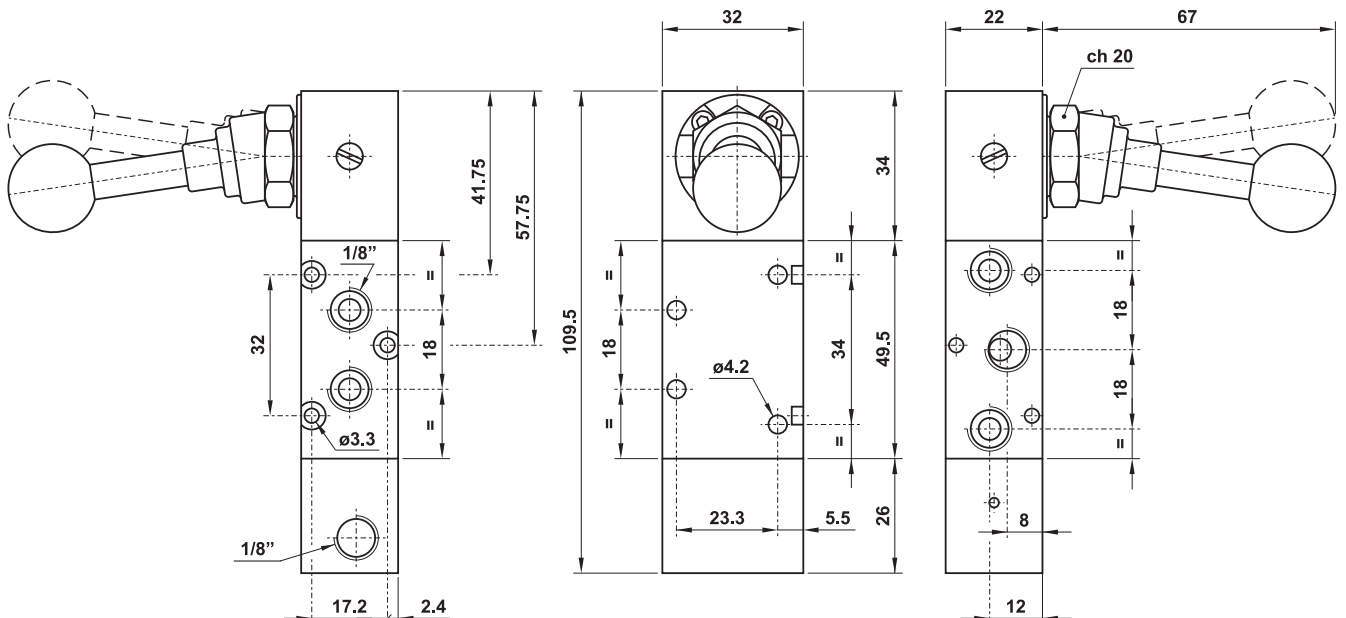
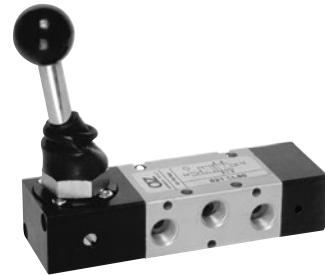
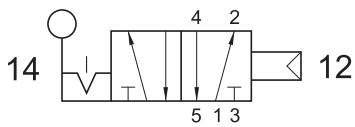
US321 CL90

3/2 1/8" NPT 90° lever - separate pneumatically piloted return



US521 CL90

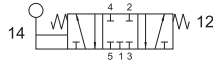
5/2 1/8" NPT 90° lever - separate pneumatically piloted return



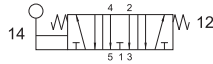
Manually actuated valves - 1/8"



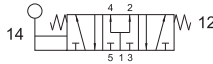
US5213C ML90 closed centers



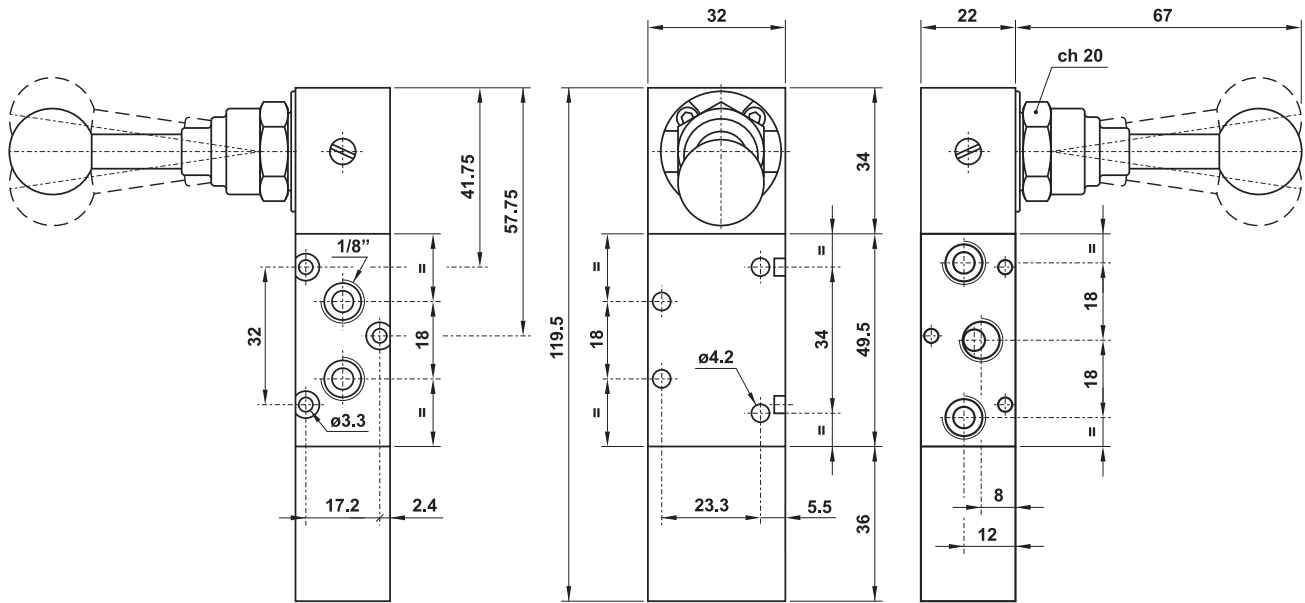
US5213A ML90 open centers



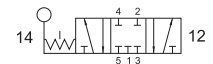
US5213P ML90 pressurized centers



5/3 1/8" NPT 90° lever - spring return to center



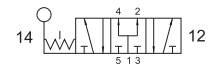
US5213C LL90 closed centers



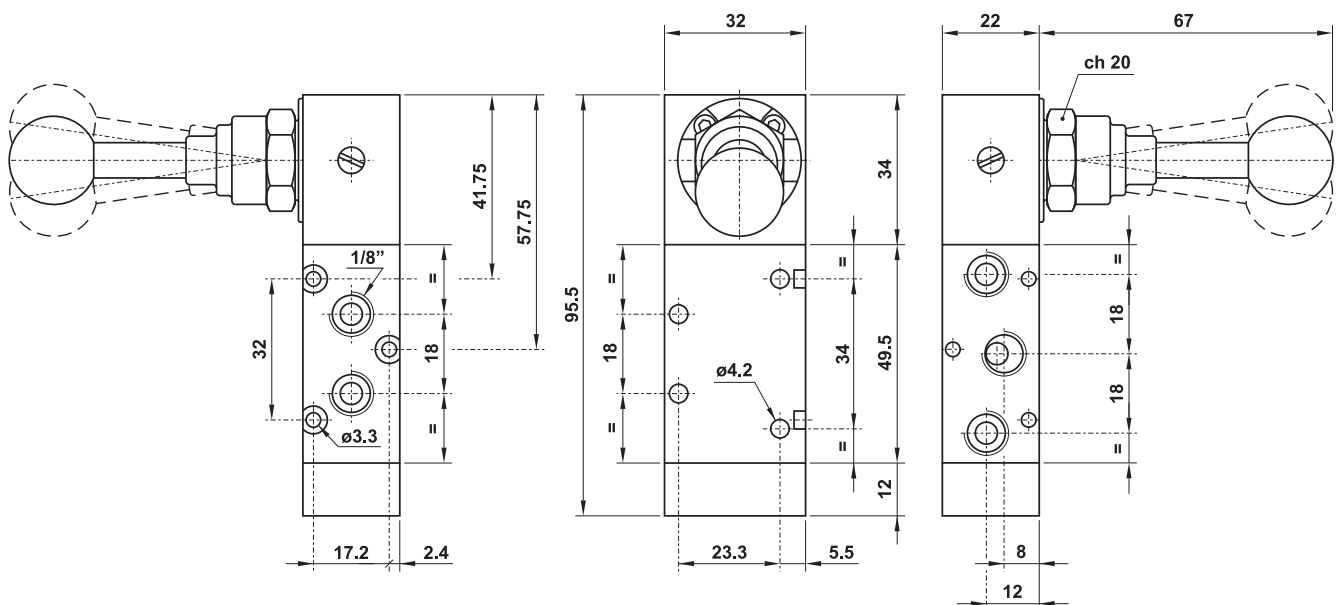
US5213A LL90 open centers



US5213P LL90 pressurized centers



5/3 1/8" NPT 90° lever - three detented positions

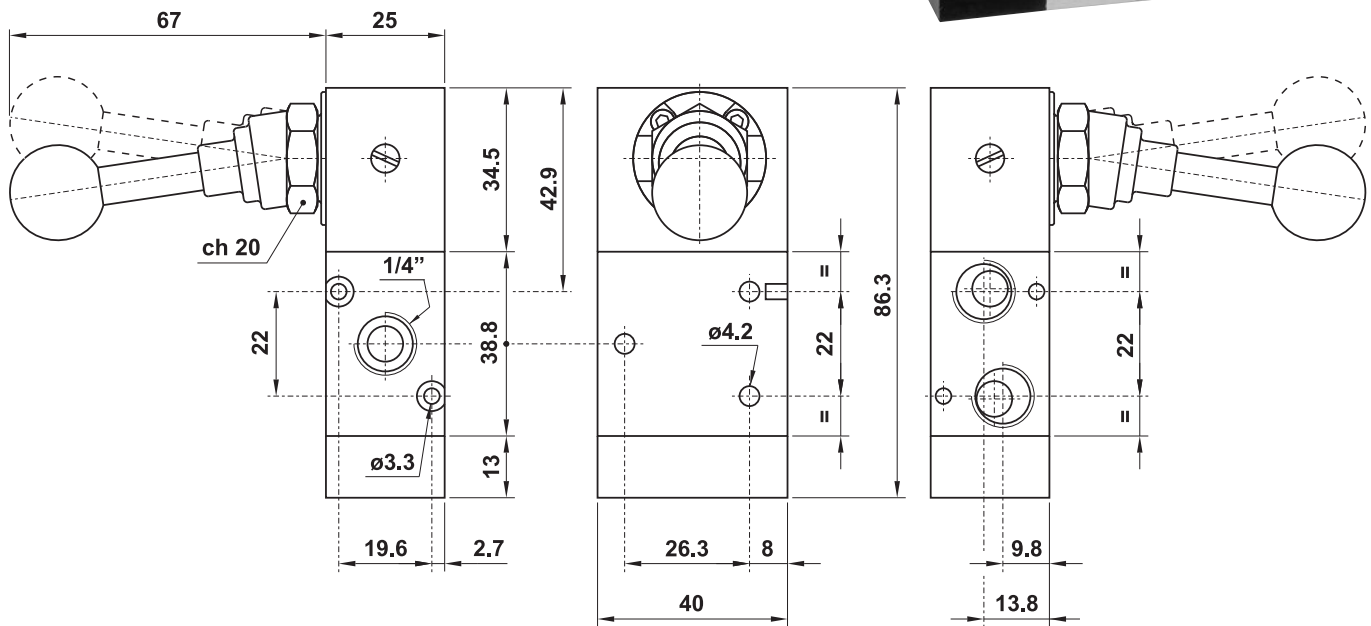
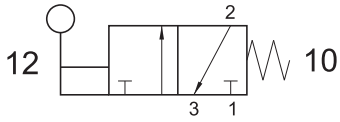


Manually actuated valves - 1/4"



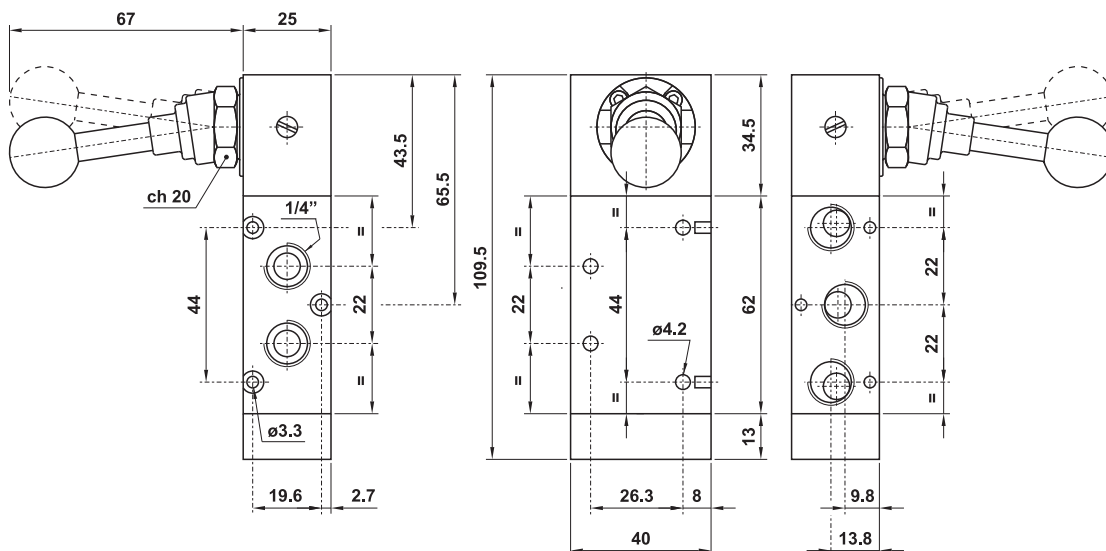
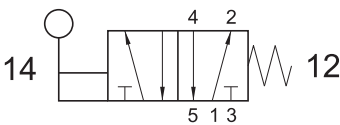
US322 ML90

3/2 1/4" NPT 90° lever - spring return



US522 ML90

5/2 1/4" NPT 90° lever - spring return

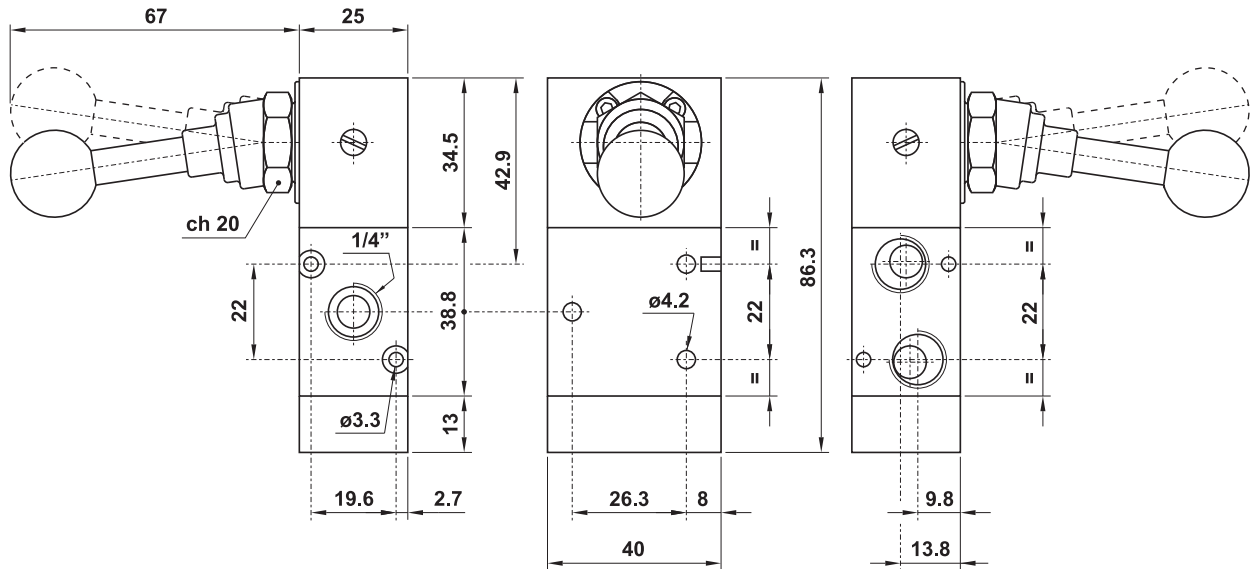
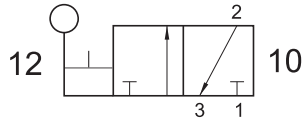


Manually actuated valves - 1/4"



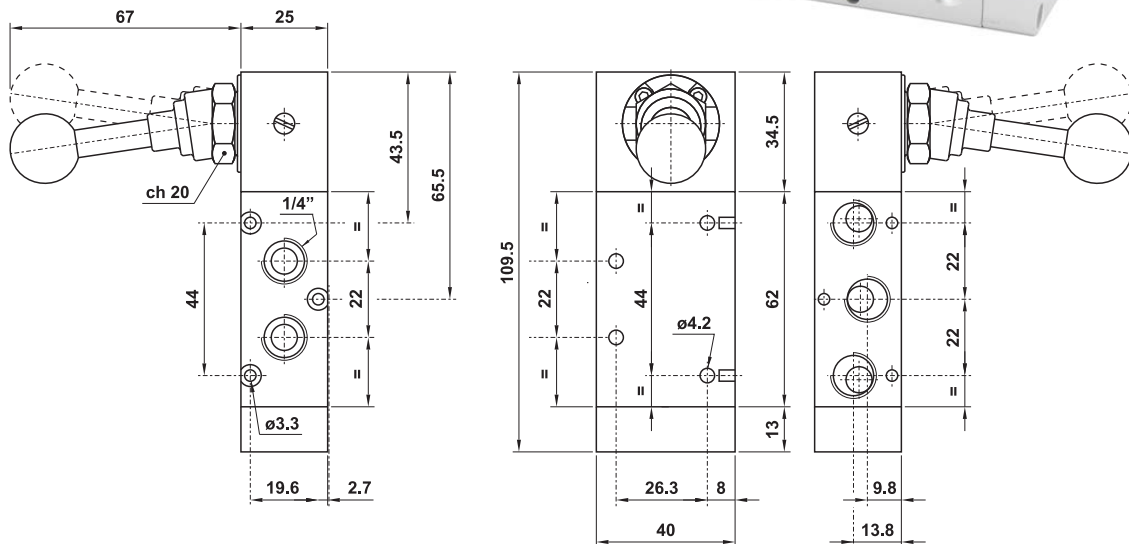
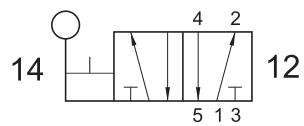
US322 LL90

3/2 1/4" NPT 90° bi-stable lever



US522 LL90

5/2 1/4" NPT 90° bi-stable lever

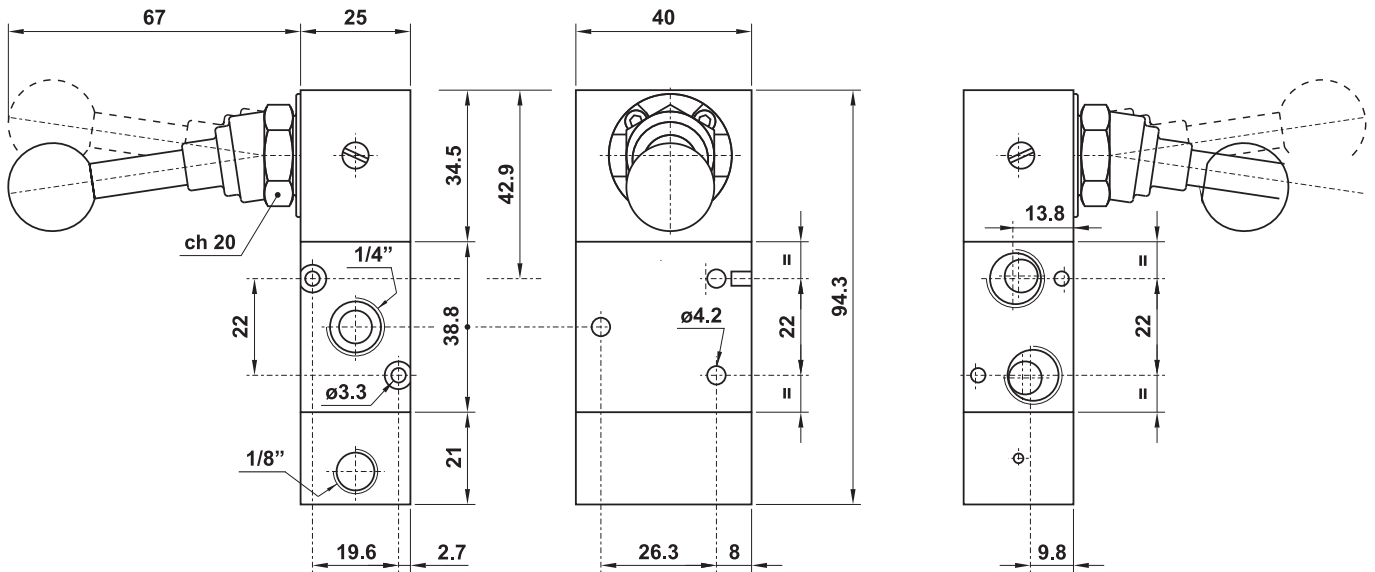
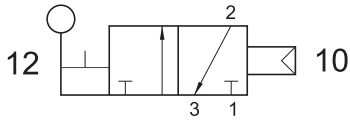


Manually actuated valves - 1/4"



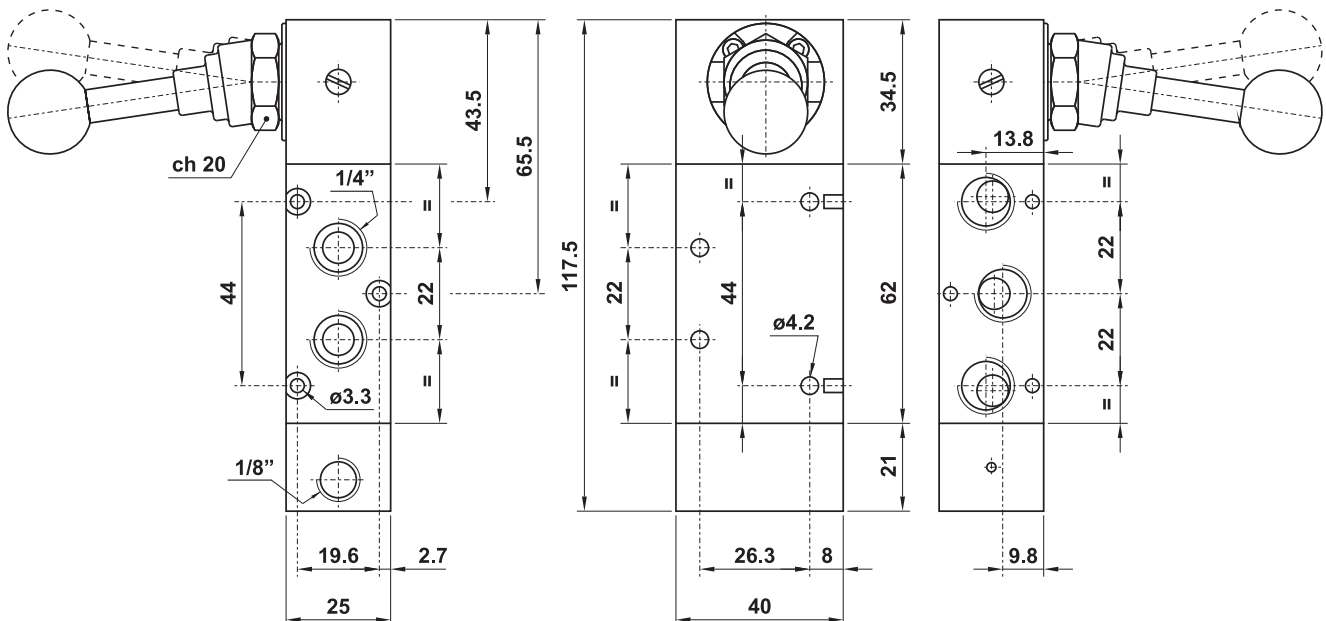
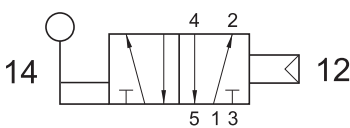
US322 CL90

3/2 1/4" NPT 90° lever - separate pneumatically piloted return



US522 CL90

5/2 1/4" NPT 90° lever - separate pneumatically piloted return



Manually actuated valves - 1/4"



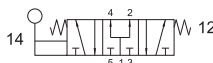
US5223C ML90 closed centers



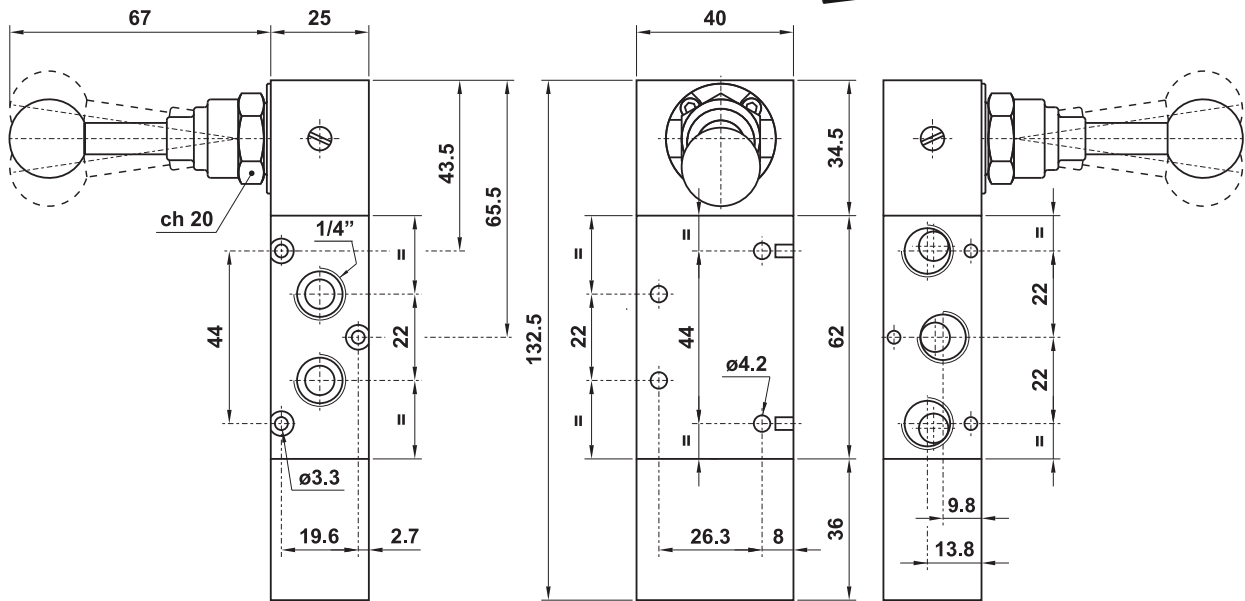
US5223A ML90 open centers



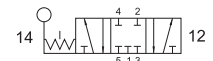
US5223P ML90 pressurized centers



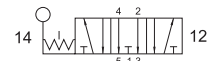
5/3 1/4" NPT 90° lever - spring return to center



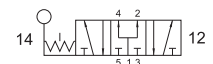
US5223C LL90 closed centers



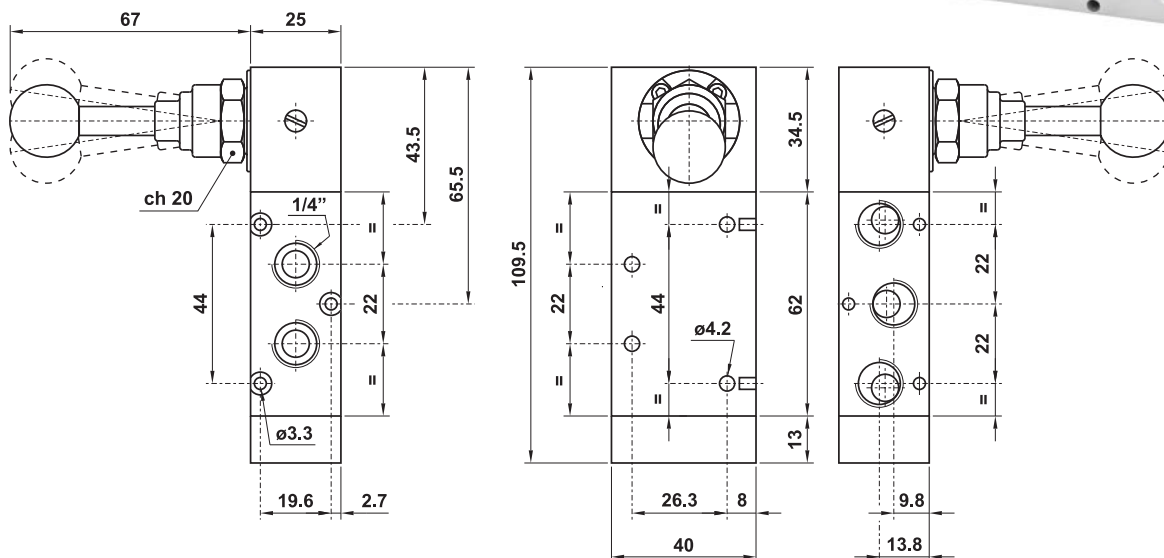
US5223A LL90 open centers



US5223P LL90 pressurized centers

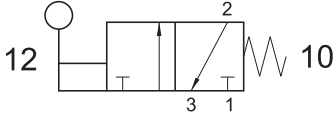


5/3 1/4" NPT 90° lever - three stable positions



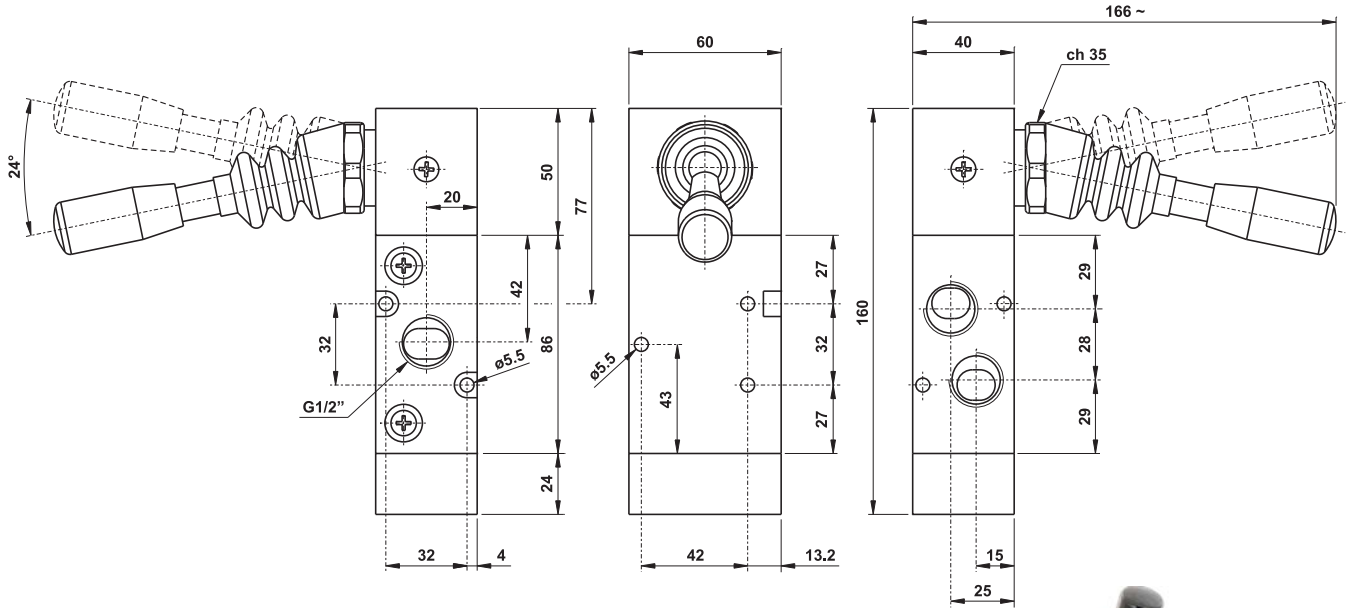
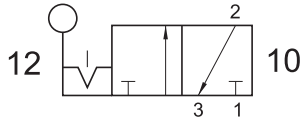
US324 ML90

3/2 1/2" double solenoid pilot



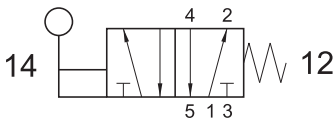
US324 LL90

3/2 1/2" 90° bi-stable lever



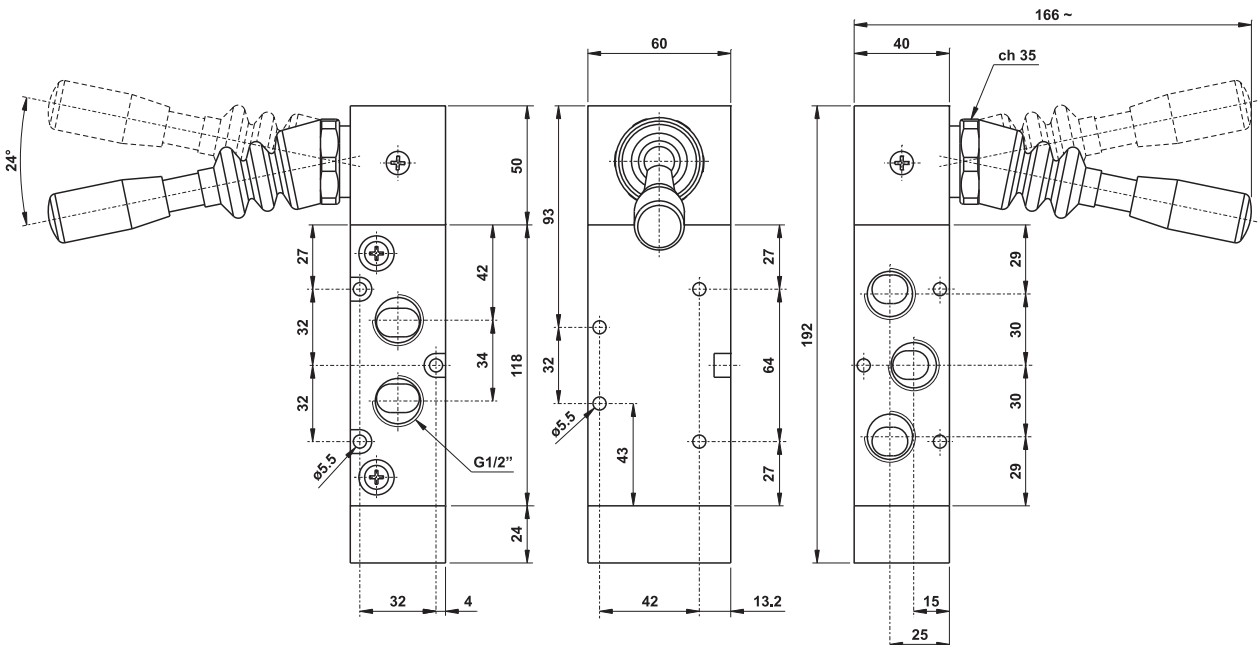
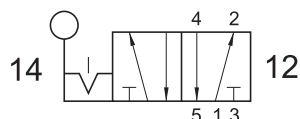
US524 ML90

5/2 1/2" double solenoid pilot



US524 LL90

5/2 1/2" 90° bi-stable lever

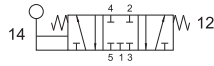


Manually actuated valves - 1/2"



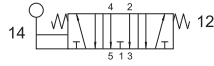
US5243C ML90

closed centres



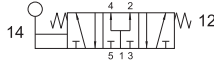
US5243A ML90

open centres



US5243P ML90

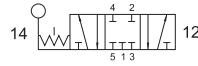
pressurized centres



5/3 1/2" 90° lever - spring return to centre

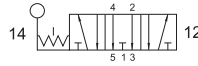
US5243C LL90

closed centres



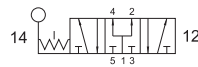
US5243A LL90

open centres

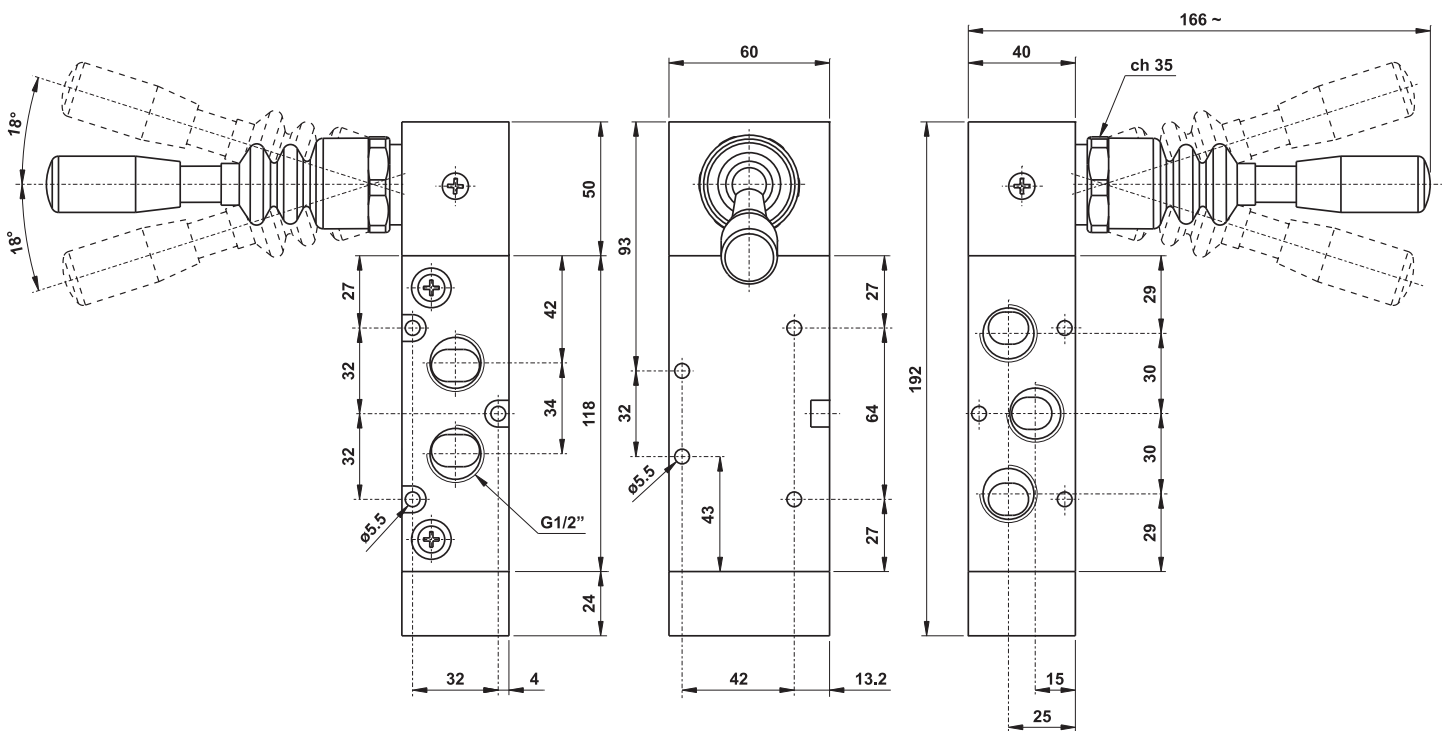


US5243P LL90

pressurized centres



5/3 1/2" 90° lever - three detented positions

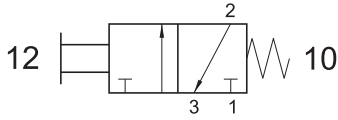


Manually actuated valves - 1/8"

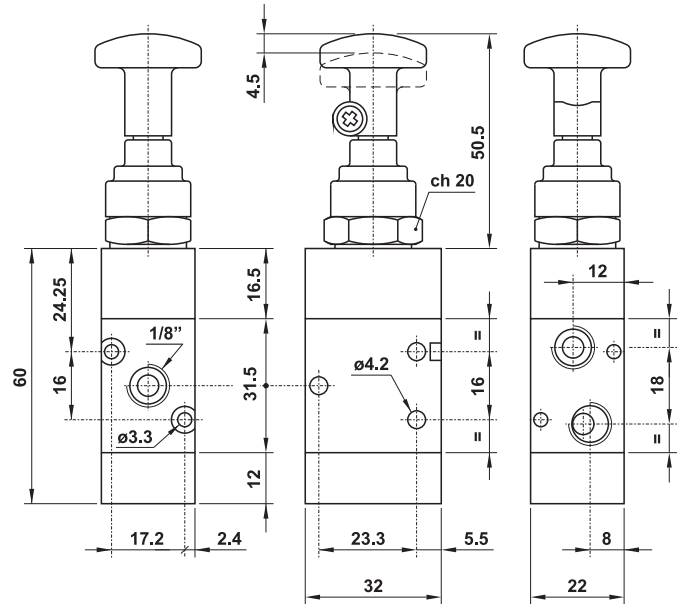


US321 MT

3/2 1/8" NPT push/pull with spring return

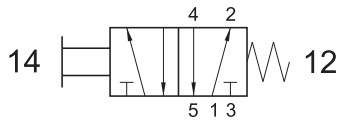


Standard push button: BLACK
On request RED push button

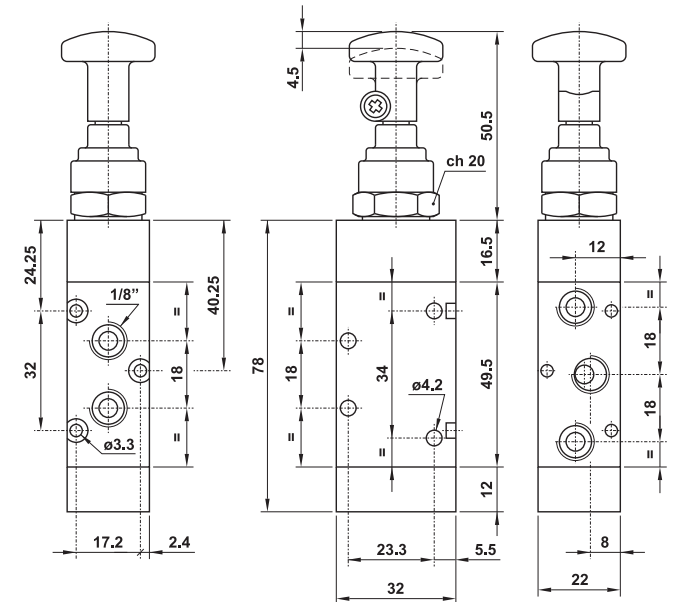


US521 MT

5/2 1/8" NPT push/pull with spring return

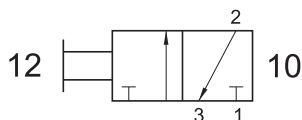


Standard push button: BLACK
On request RED push button

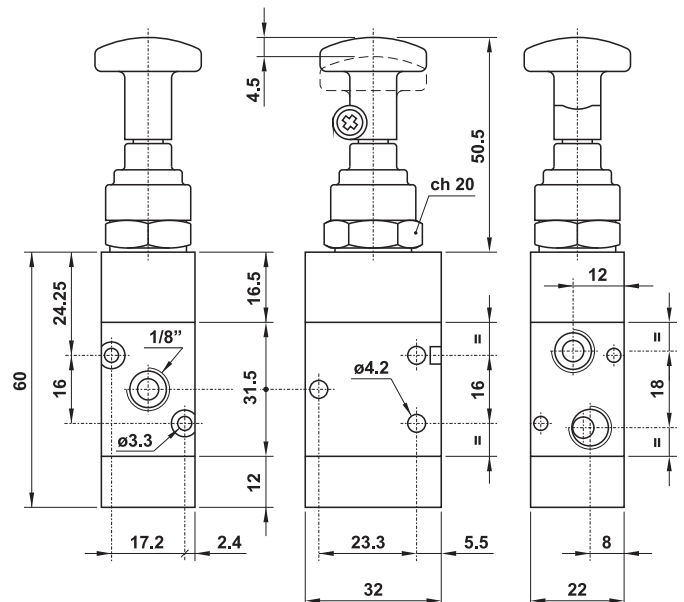


US321 TT

3/2 1/8" NPT bi-stable push/pull



Standard push button: BLACK
On request RED push button

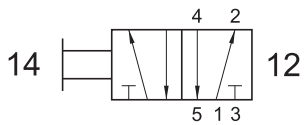


Manually actuated valves

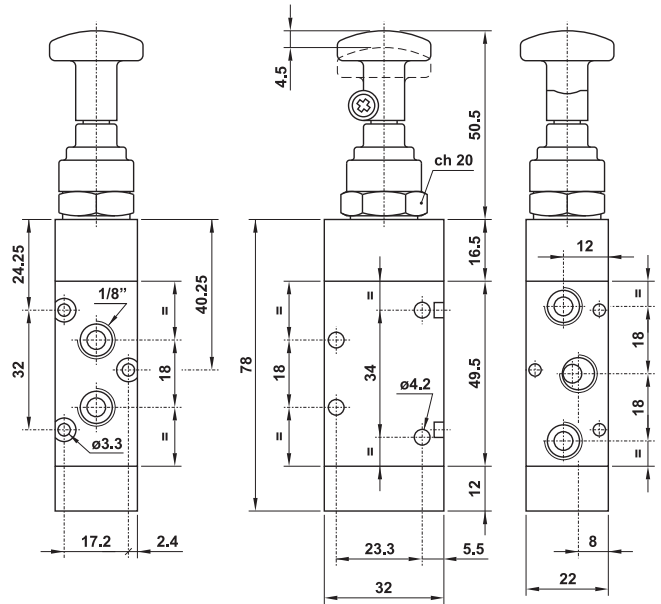


US521 TT

5/2 1/8" NPT bi-stable push/pull

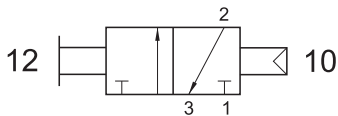


Standard push button: BLACK
On request RED push button



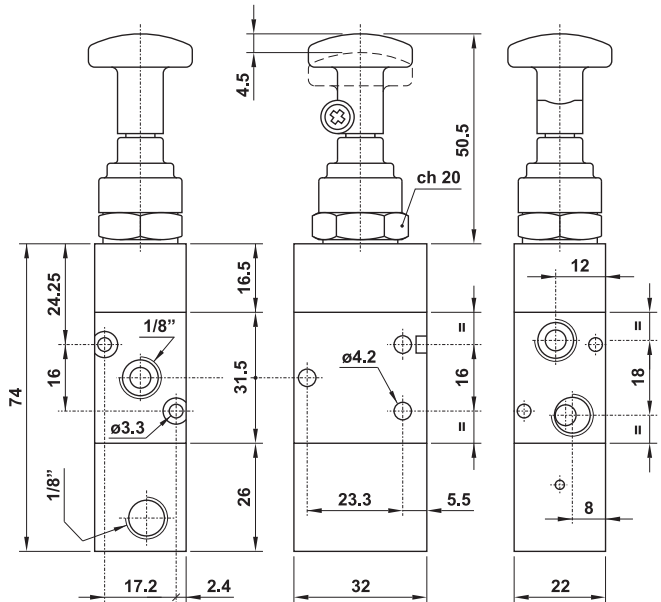
US321 CT

3/2 1/8" NPT push/pull with separate pneumatically piloted return



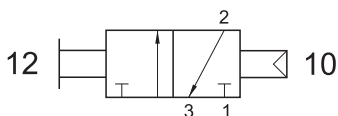
The return can be done only with pneumatic pilote signal.

Standard push button: BLACK
On request RED push button



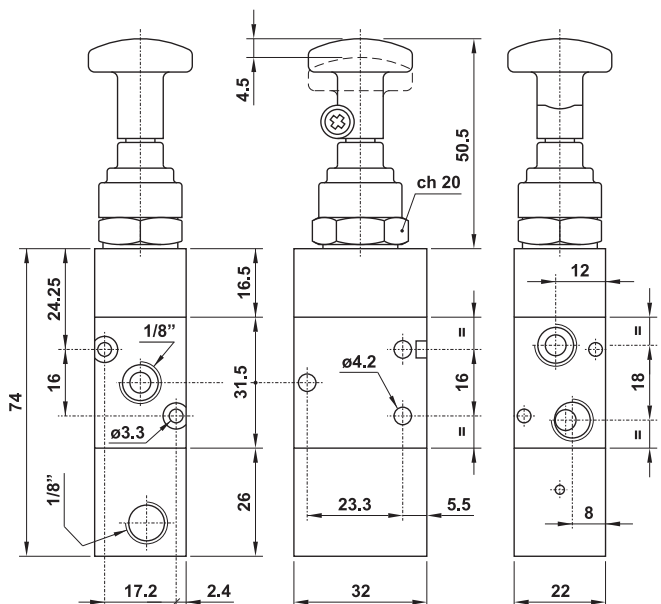
US321 CTT

3/2 1/8" NPT bi-stable push/pull with separate pneumatically piloted return



The return can be done with pneumatic pilote signal or by pulling the knob.

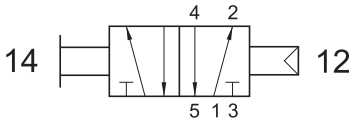
Standard push button: BLACK
On request RED push button



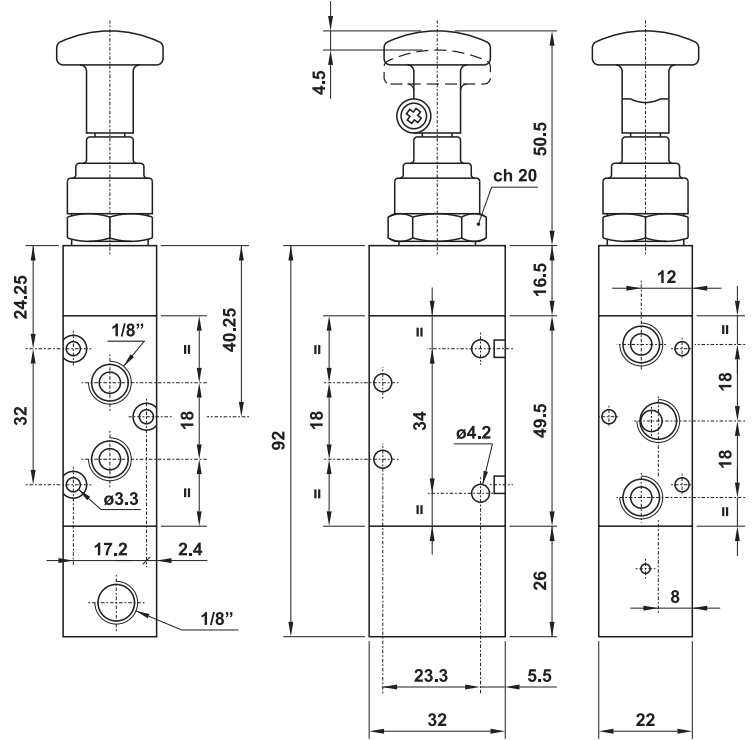
US521 CT

5/2 1/8" NPT push/pull with separate pneumatically piloted return

The return can be done only with pneumatic pilote signal.



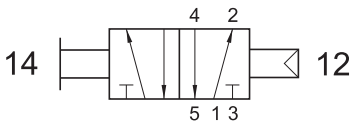
Standard push button: BLACK
On request RED push button



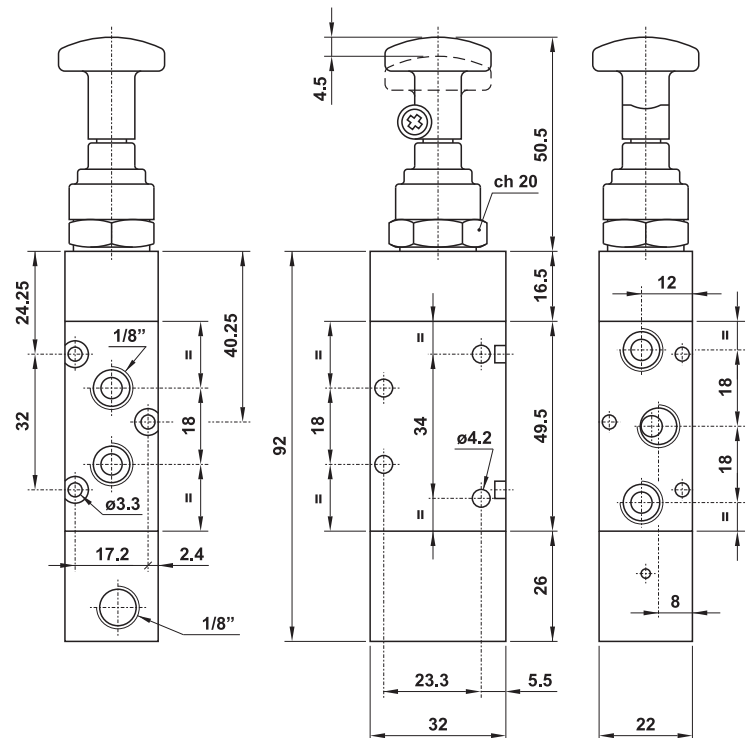
US521 CTT

5/2 1/8" NPT bi-stable push/pull with separate pneumatically piloted return

The return can be done with pneumatic pilote signal or by pulling the knob.

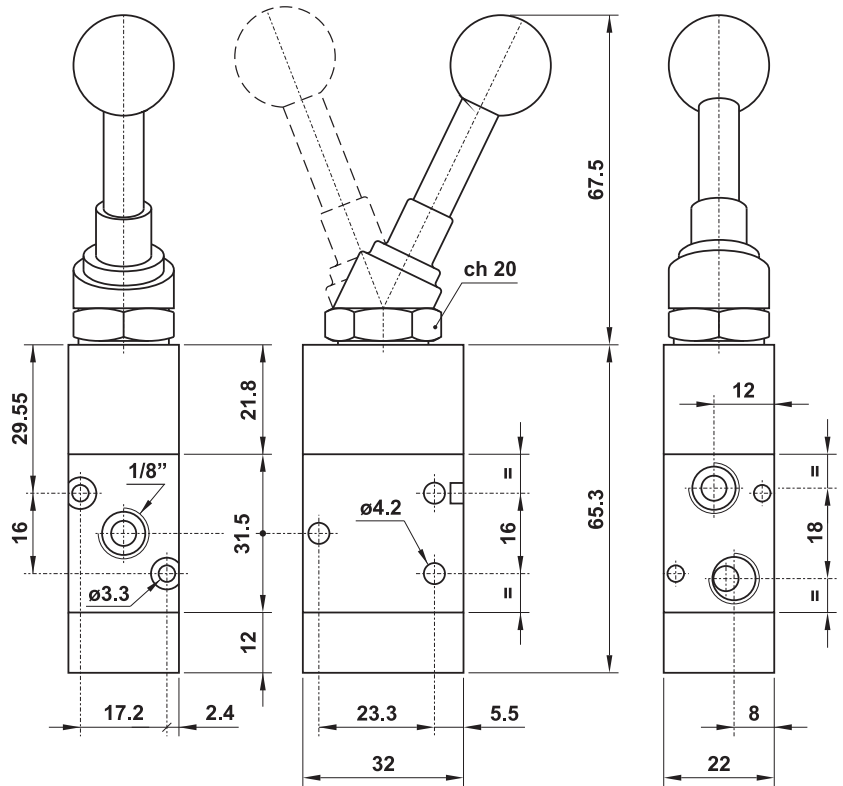
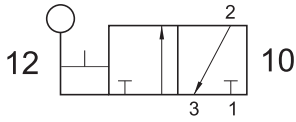


Standard push button: BLACK
On request RED push button



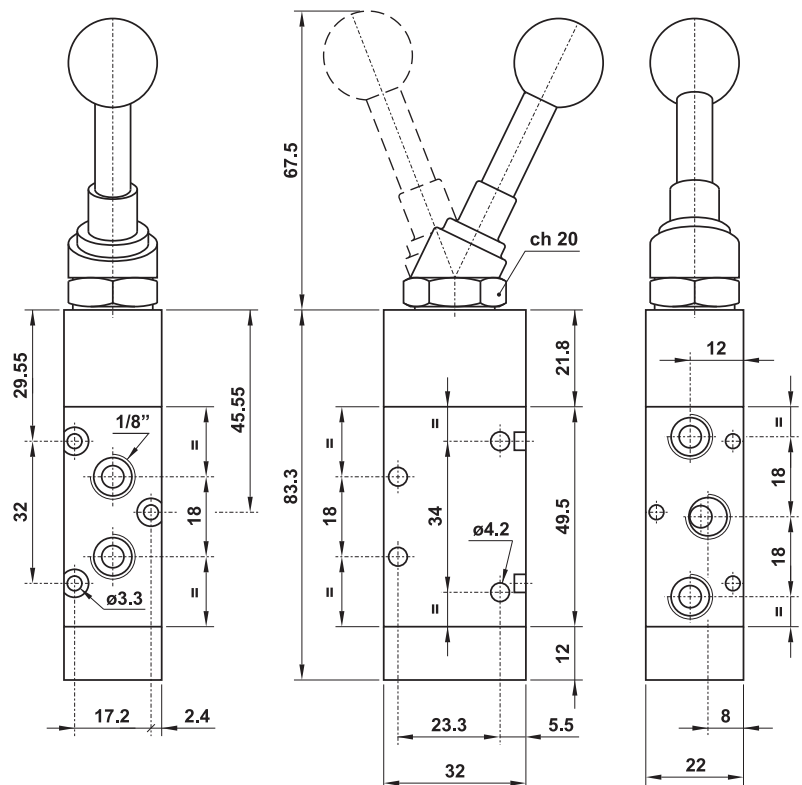
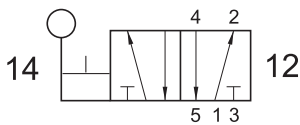
US321 LL

3/2 1/8" NPT bi-stable top lever



US521 LL

5/2 1/8" NPT bi-stable top lever

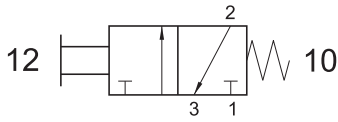


Manually actuated valves - 1/4"

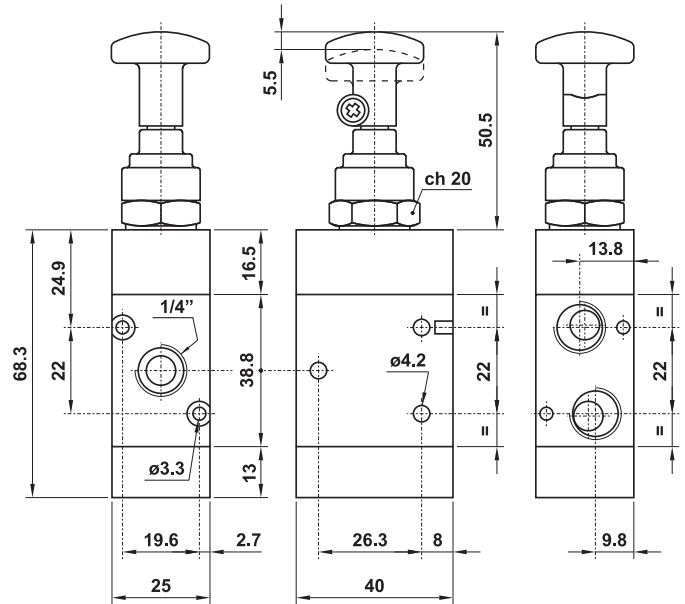


US322 MT

3/2 1/4" NPT push/pull with spring return

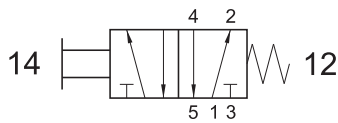


Standard push button: BLACK
On request RED push button

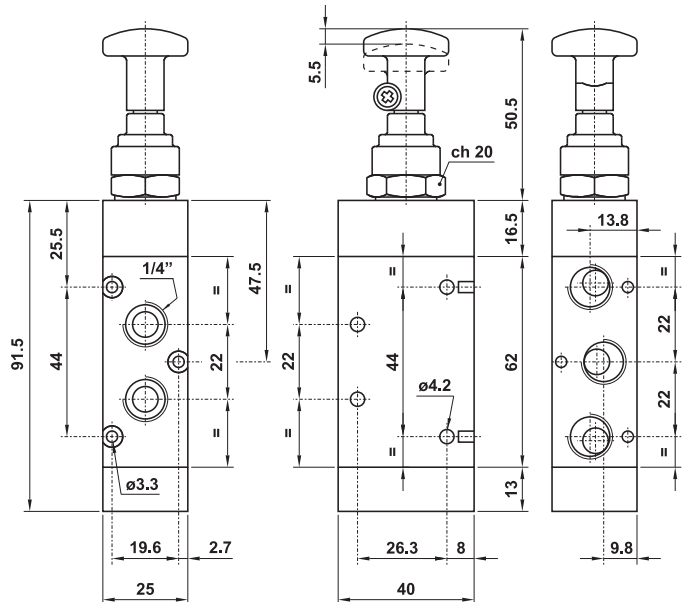


US522 MT

5/2 1/4" NPT push/pull with spring return

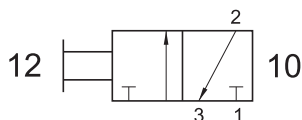


Standard push button: BLACK
On request RED push button

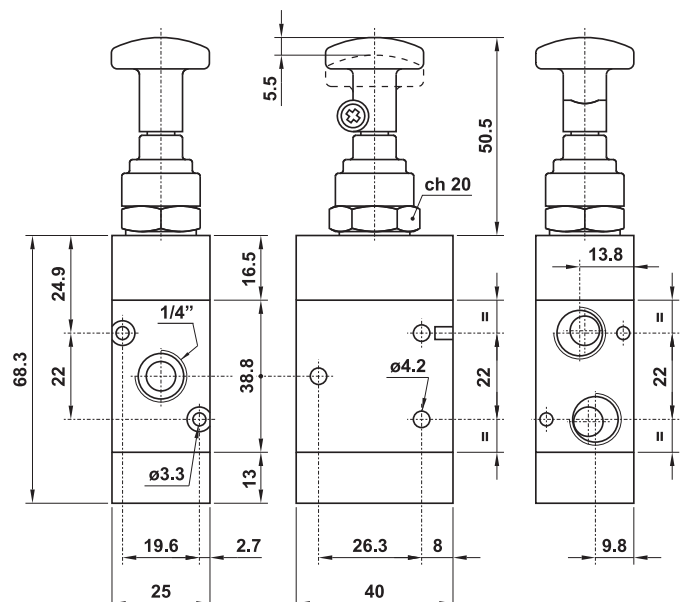


US322 TT

3/2 1/4" NPT bi-stable push/pull



Standard push button: BLACK
On request RED push button

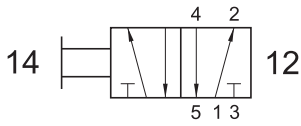


Manually actuated valves - 1/4"

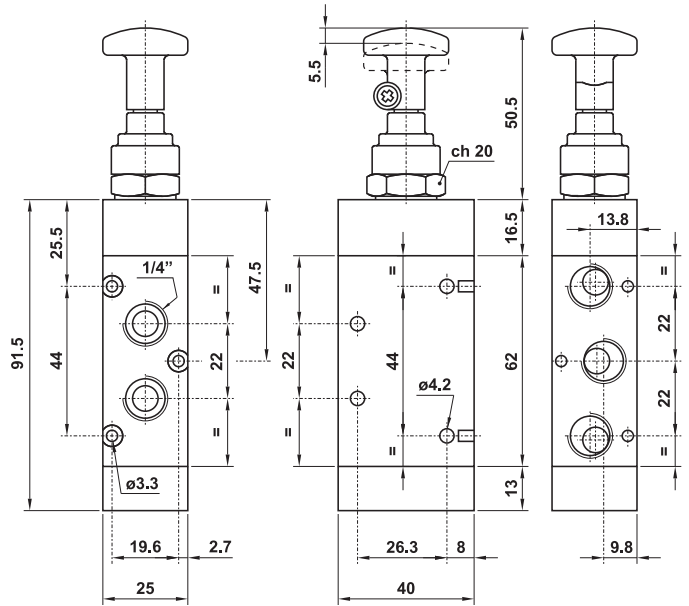


US522 TT

5/2 1/4" NPT bi-stable push/pull

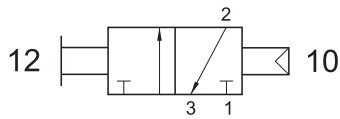


Standard push button: BLACK
On request RED push button

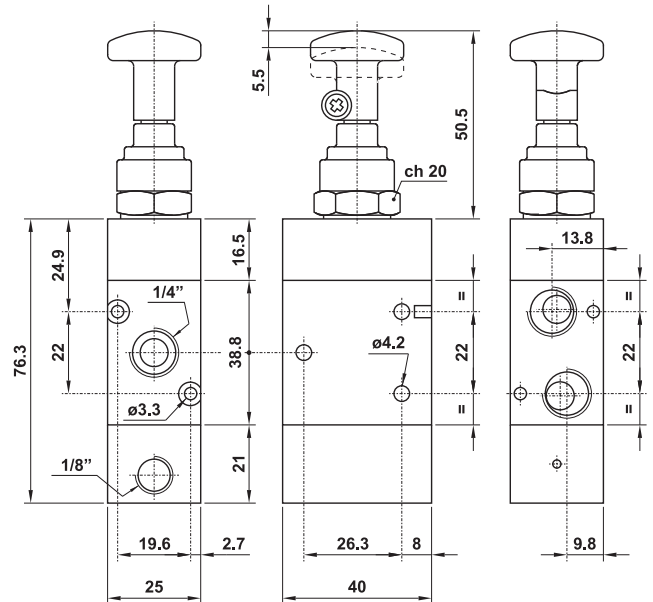


US322 CT

3/2 1/4" NPT push/pull with separate pneumatically piloted return

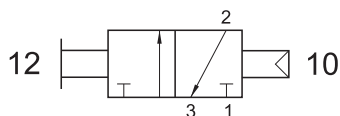


The return can be done only with pneumatic pilot signal.

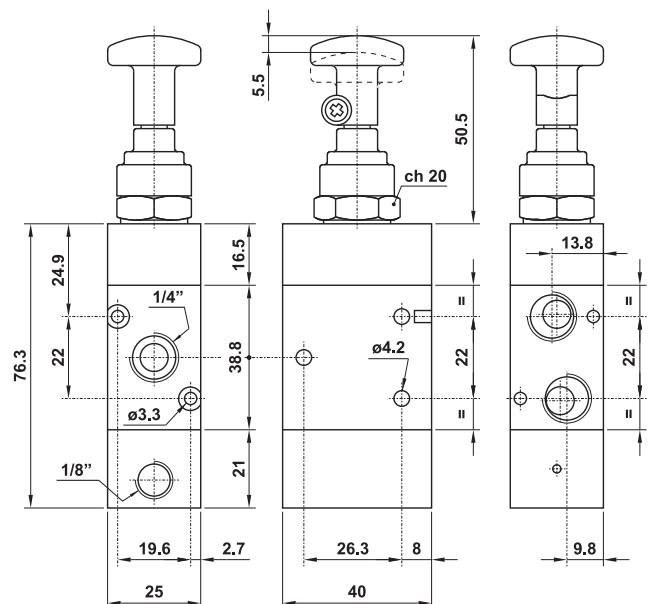


US322 CTT

3/2 1/4" NPT bi-stable push/pull with separate pneumatically piloted return



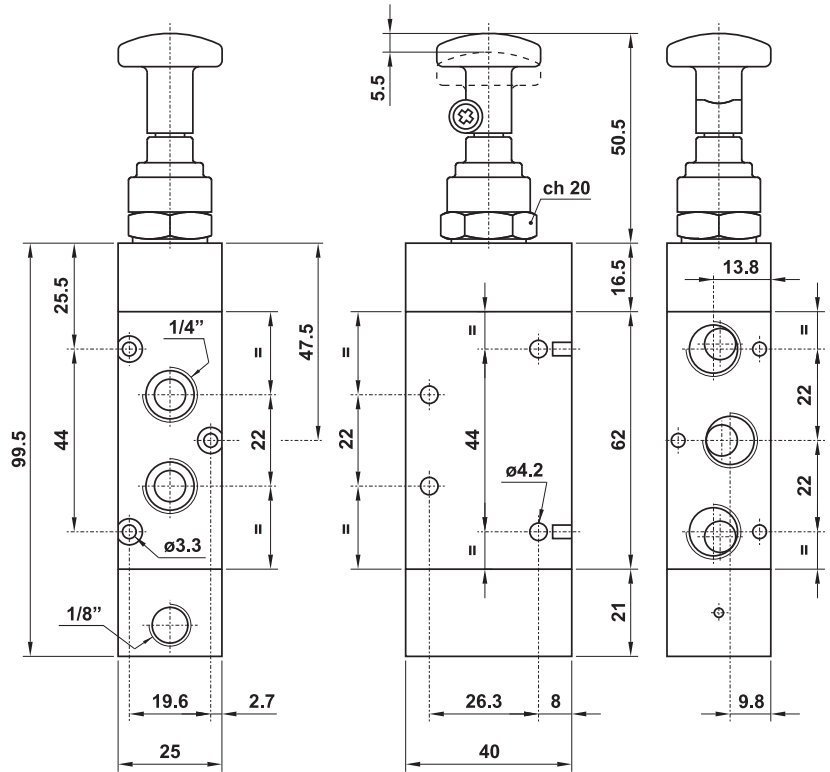
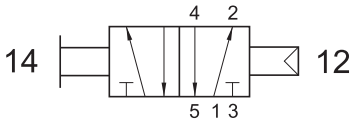
The return can be done with pneumatic pilot signal or by pulling the knob.



US522 CT

5/2 1/4" NPT push/pull with separate pneumatically piloted return

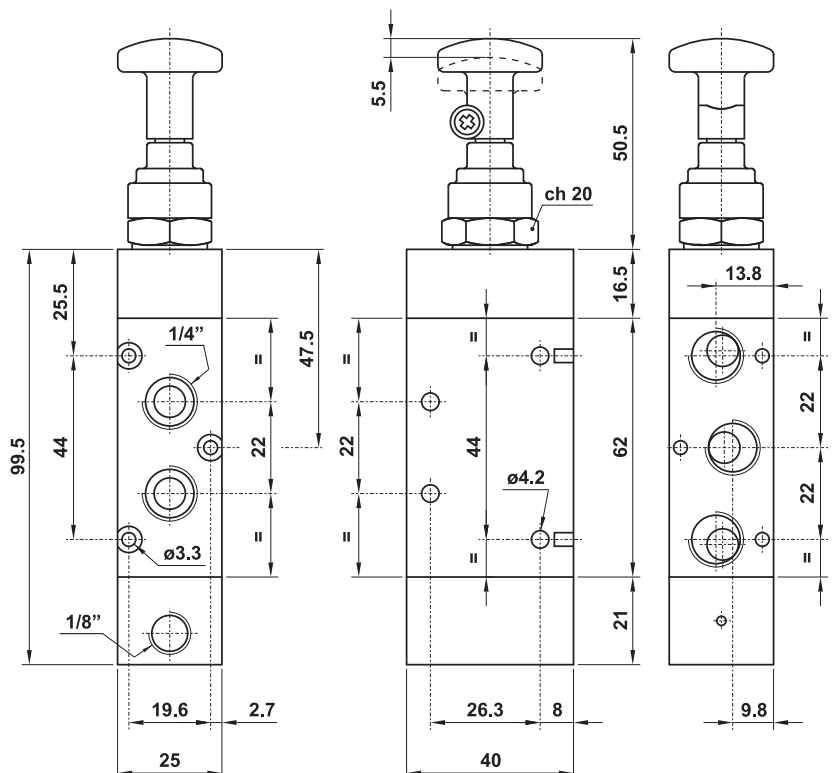
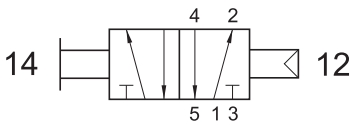
The return can be done only with pneumatic pilote signal.



US522 CTT

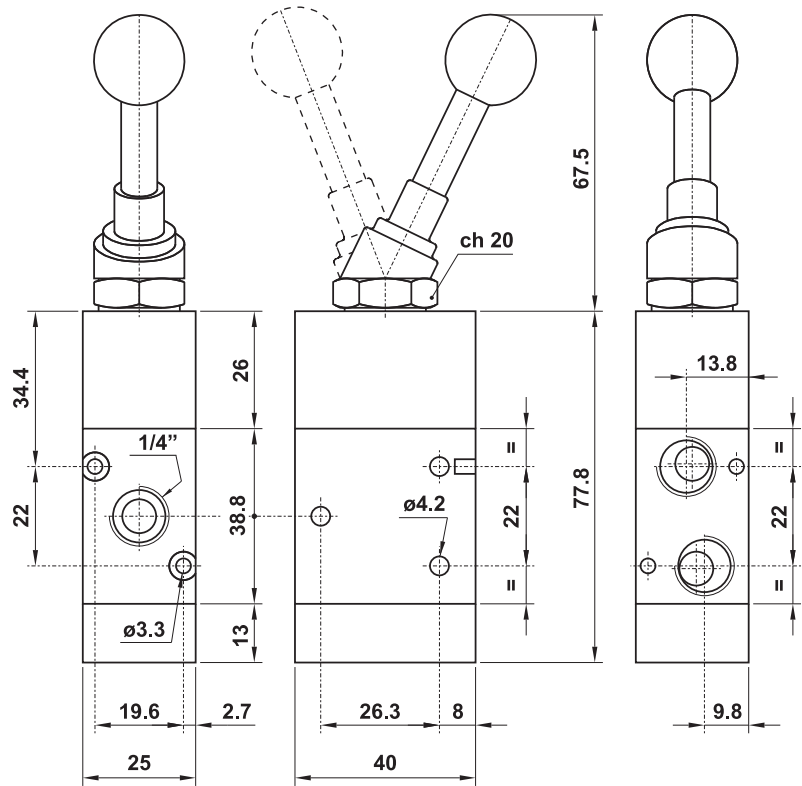
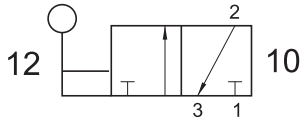
5/2 1/4" NPT bi-stable push/pull with separate pneumatically piloted return

The return can be done with pneumatic pilote signal or by pulling the knob.



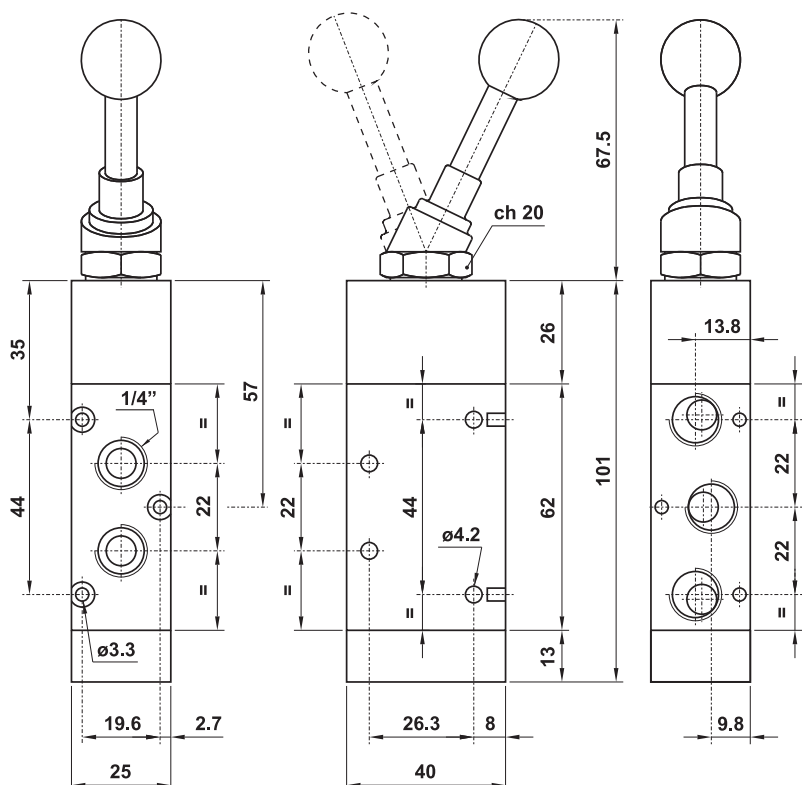
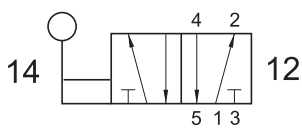
US322 LL

3/2 1/4" NPT bi-stable top lever



US522 LL

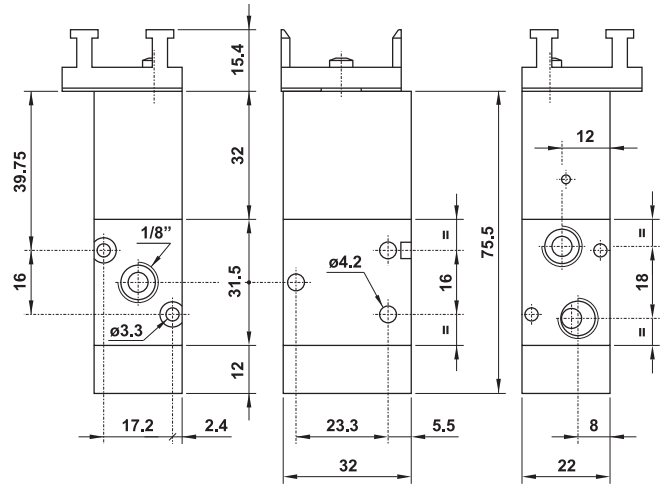
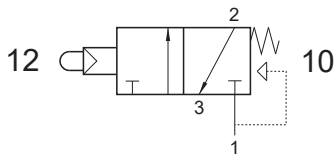
5/2 1/4" NPT bi-stable top lever





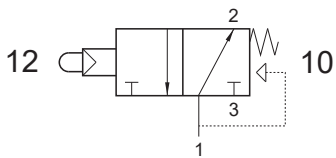
US321 MB

3/2 1/8" NPT N/C servo-piloted tappet with actuator adaptor for panel mounting - air and spring return

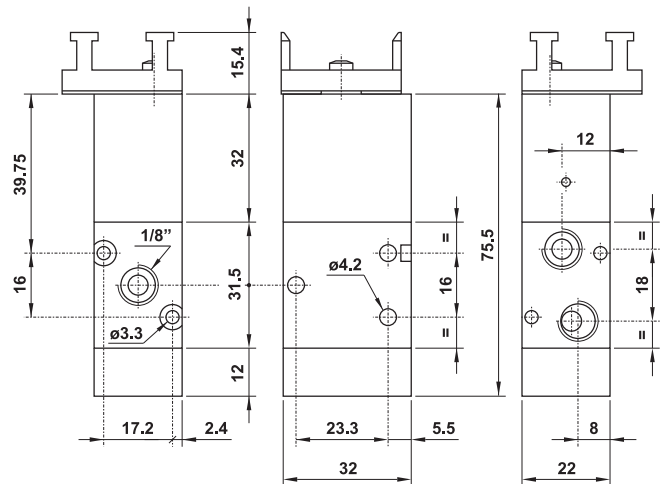


US321 MBA

3/2 1/8" NPT N/O servo-piloted tappet with actuator adaptor for panel mounting - air and spring return

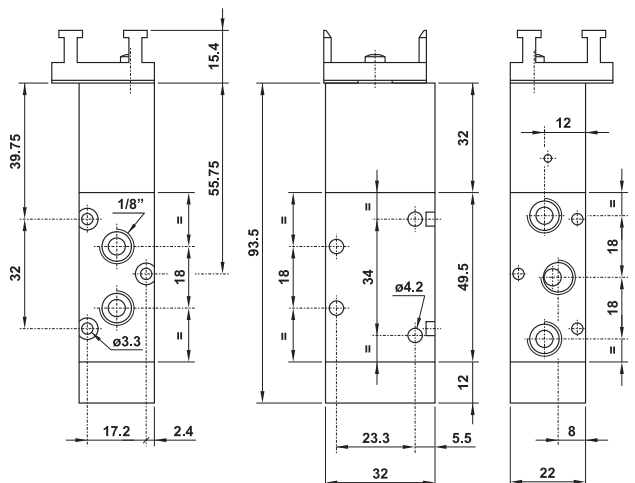
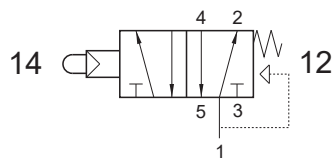


ONLY ALUMINIUM VERSION



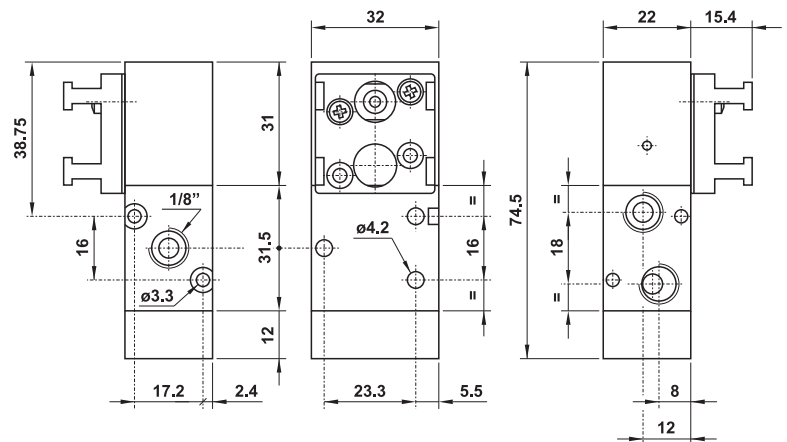
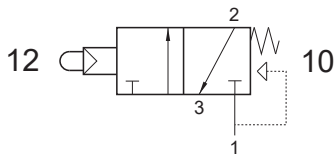
US521 MB

5/2 1/8" NPT servo-piloted tappet with actuator adaptor for panel mounting - air and spring return



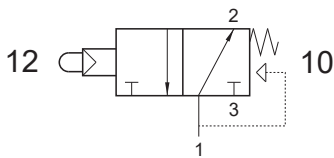
US321 MB90

3/2 1/8" NPT N/C servo-piloted tappet with 90° actuator adaptor for panel mounting - air and spring return

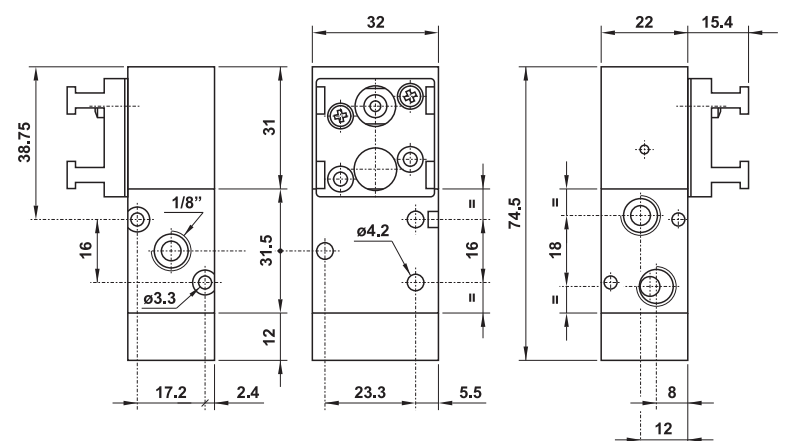
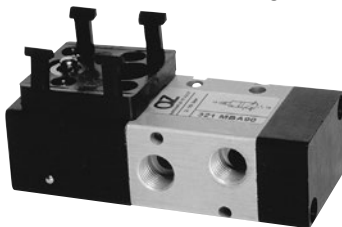


US321 MBA90

3/2 1/8" NPT N/O servo-piloted tappet with 90° actuator adaptor for panel mounting - air and spring return

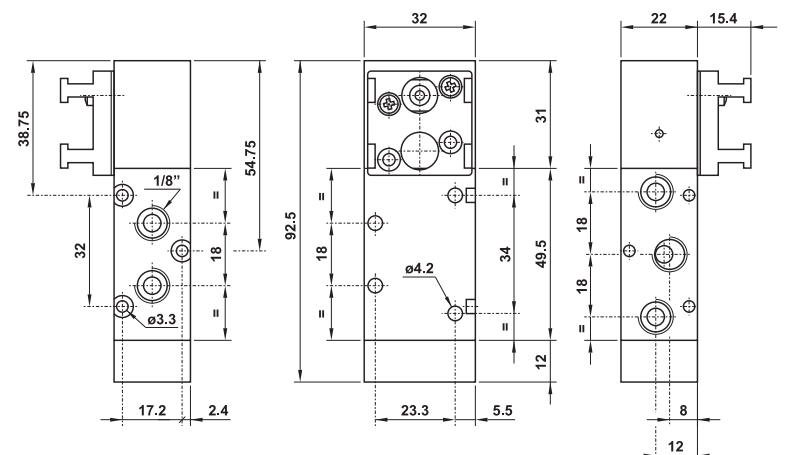
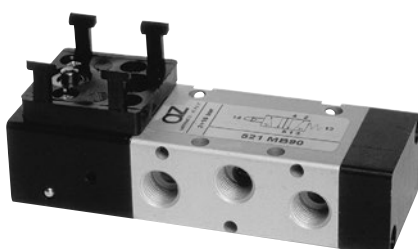
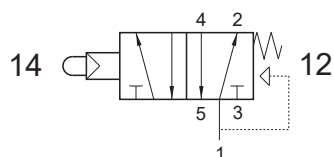


ONLY ALUMINIUM VERSION



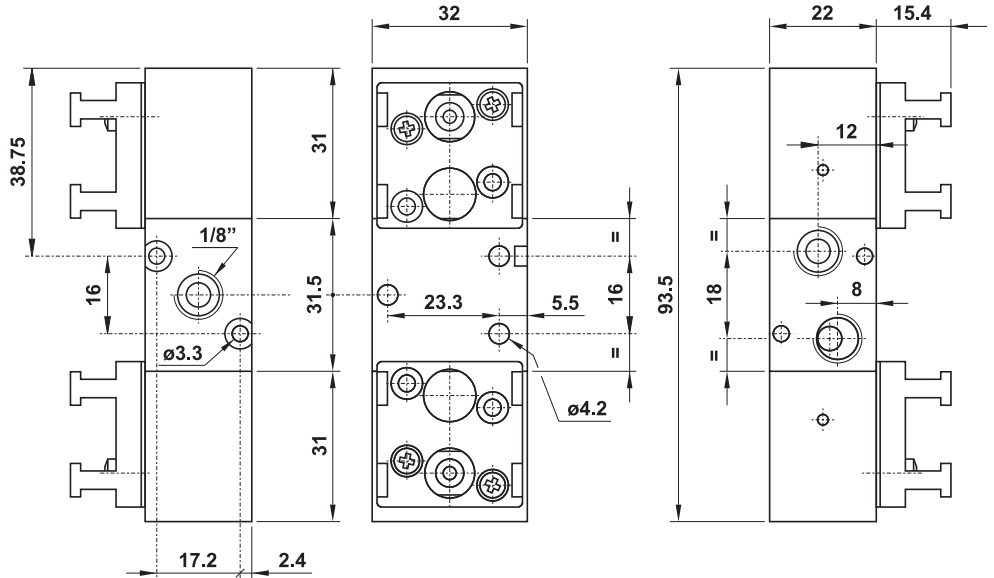
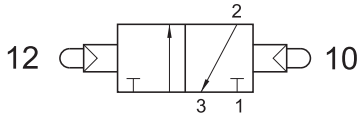
US521 MB90

5/2 1/8" NPT servo-piloted tappet with 90° actuator adaptor for panel mounting - air and spring return



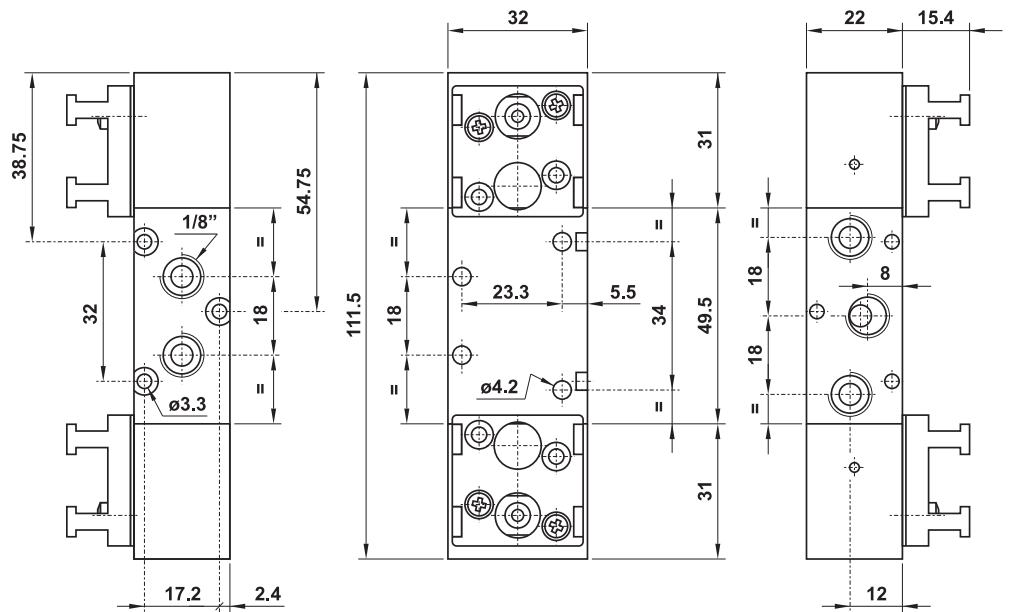
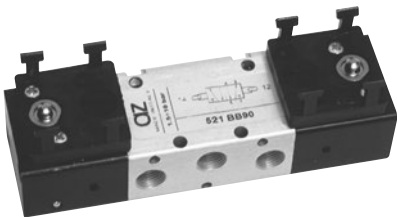
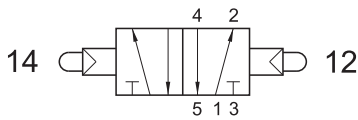
US321 BB90

3/2 1/8" NPT double servo-piloted tappets with 90° actuator adaptor for panel mounting



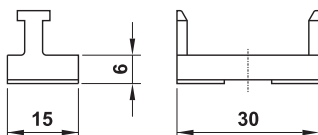
US521 BB90

5/2 1/8" NPT double servo-piloted tappets with 90° actuator adaptor for panel mounting



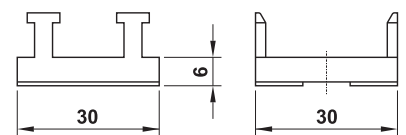
08.017.2

single adaptor for panel mounting actuator, complete with fixing screws



08.015.2

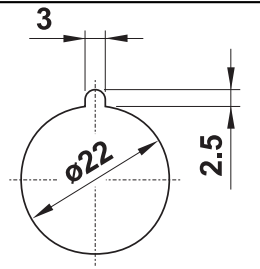
double adaptor for panel mounting actuator, complete with fixing screws



Protected push button

code	standard colours
PR1/NRB	RED, BLACK and WHITE (supplied in kit)

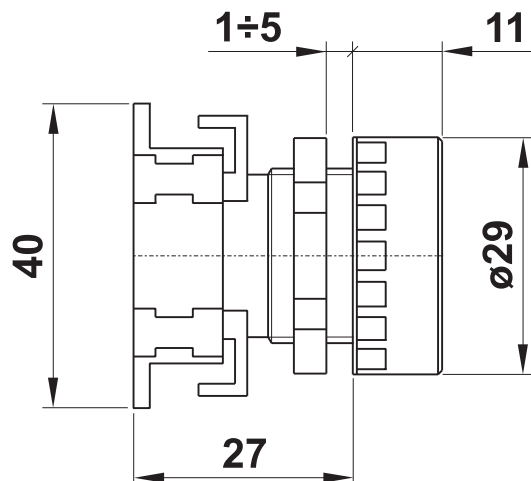
Panel mounting hole with antirotation feature



- The following colours can be ordered separately

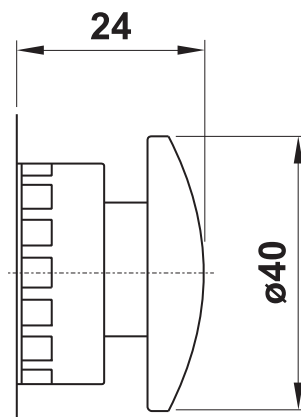
code	colour
DCV1	GREEN
DCG1	YELLOW
DCA1	LIGHT BLUE
DCB1	WHITE

code	colour
DCN1	BLACK
DCR1	RED

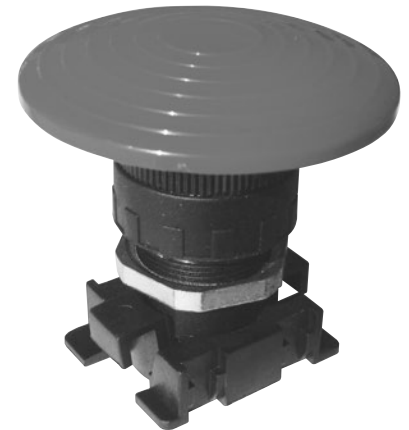
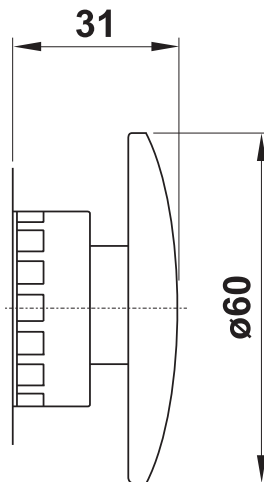


ø40 mushroom

code	description	colour
PF2/40	axial mono-stable	RED
PF1/40	axial mono-stable	BLACK
PFB2/40	turn to unlock	RED

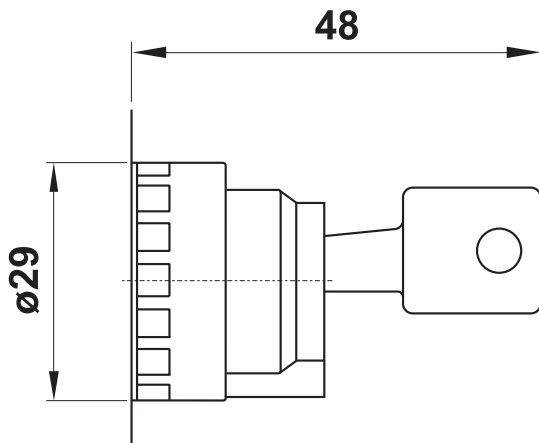


ø60 palm



code	description	colour
PFBA2	multi-directional	RED
PFB2/60	turn to unlock	RED

Key selector



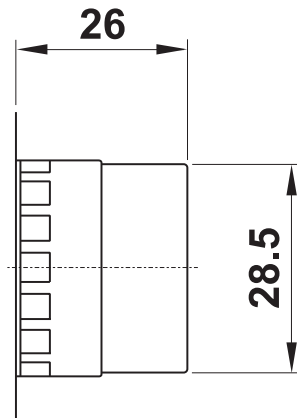
All locks and keys are identical

code	function	position to pull the key out
SSC/CD-V	0 1	only in central position
SSC/CD-Z	0 1	both positions
SSC/E-V	2 0 1	only in central position



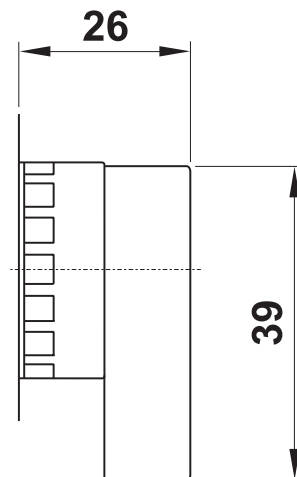
Short lever selector

code	colour	function
SS1/CD	BLACK	0 1
SS1/CD-R	BLACK	0 ← 1
SS1/E	BLACK	2 0 1
SS1/E-RC	BLACK	2 → 0 ← 1



Long lever selector

code	colour	function
SSP1/CD	BLACK	0 1
SSP1/CD/R	BLACK	0 ← 1
SSP1/E	BLACK	2 0 1
SSP1/E-RC	BLACK	2 → 0 ← 1



Material	High performance plastic material
Protection degree	IP 55
According to norms	EN 60947-5-1 VDE 0660 IEC 947-5
Temperature range	-15 +60°C (131°F)
Mechanical life time	500000 actuations