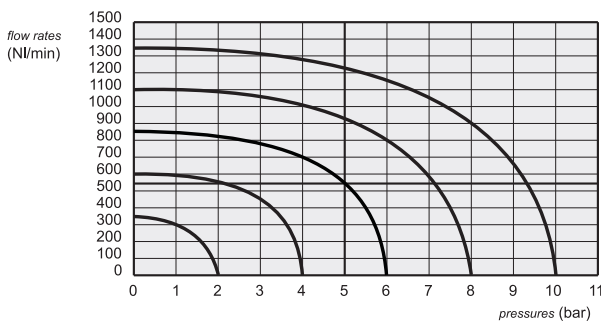
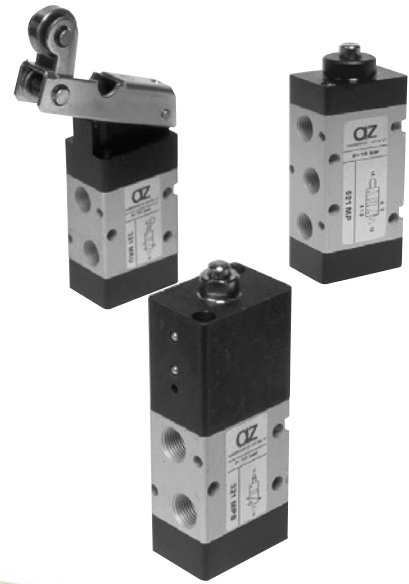


# Mechanically actuated valves



- 3/2-5/2 spool valves with 1/8" - 1/4" NPT threaded ports  
BSP version available on request
- Installation in any position
- Comprehensive range of actuations, direct or servo-piloted
- Special versions on request



## Materials

- Body:** aluminium 11S
- End cups:** aluminium 11S
- Springs:** stainless steel
- Seals:** NBR
- Spool:** nickel plated aluminium
- Internal parts:** brass OT58

ATEX valves on request

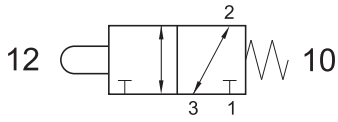
Nominal diameter	5 mm (0.2 in)	
Temperature range	max +60°C (140°F)	
Operating pressure	direct actuation	servo-piloted actuation
	-0.9 ... 10 bar (Vacuum ... 145 PSI) -0.09 ... 1 MPa	2.5 ... 10 bar (36 ... 145 PSI) 0.25 ... 1 MPa
Actuating force (where not otherwise stated)	direct actuation	servo-piloted actuation
	~ 40 N	~ 4 N
Fluid	50µ filtered, lubricated or non lubricated air	

# Mechanically actuated valves - 1/8"

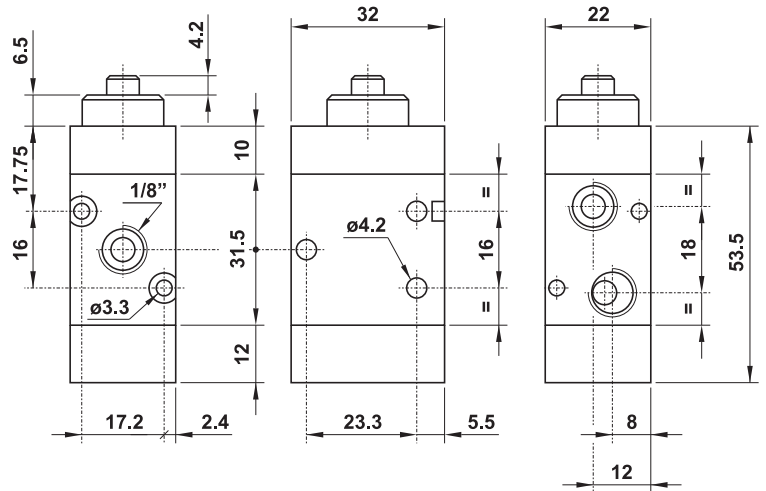


## US321 MP

3/2 1/8" NPT tappet - spring return

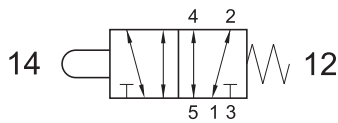


Actuating force: 32.36 N

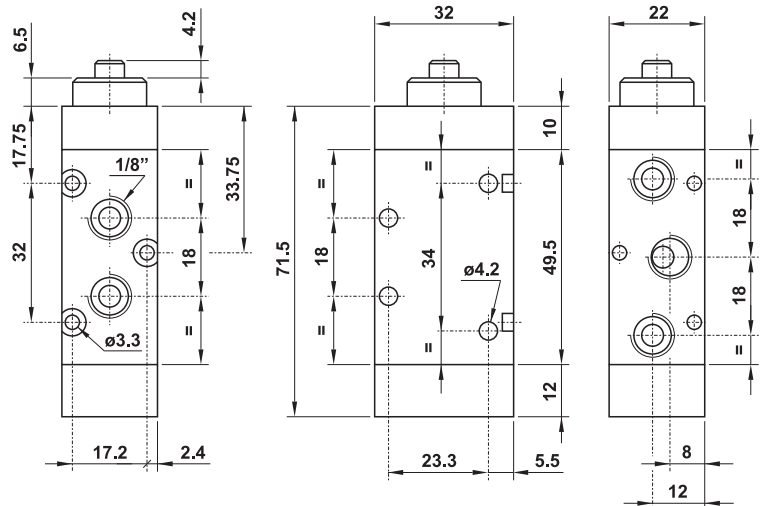


## US521 MP

5/2 1/8" NPT tappet - spring return

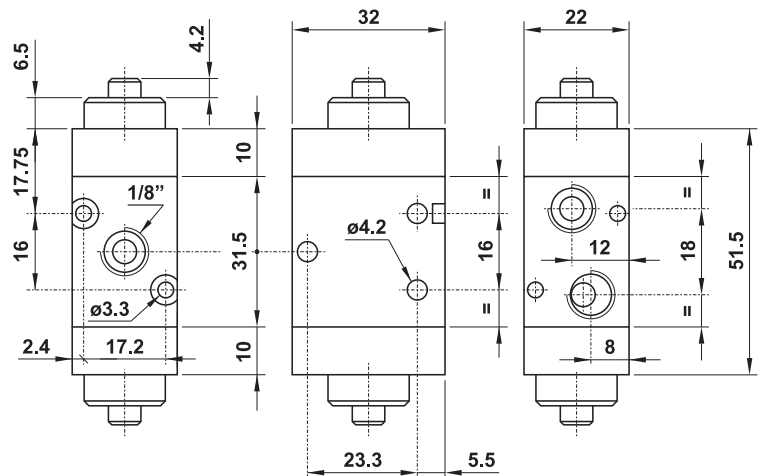
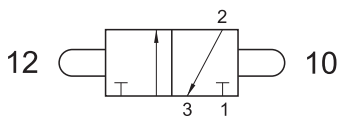


Actuating force: 32.36 N



## US321 2P

3/2 1/8" NPT double tappet

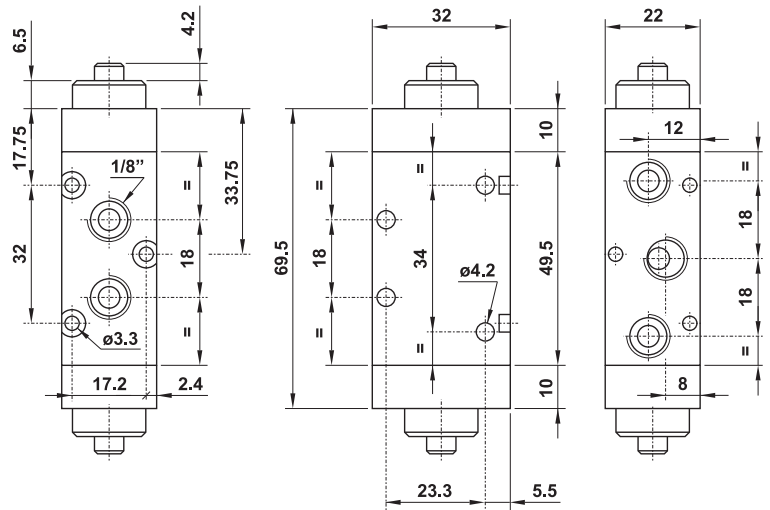
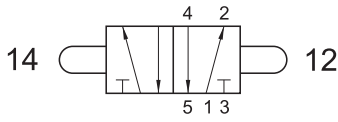


# Mechanically actuated valves - 1/8"



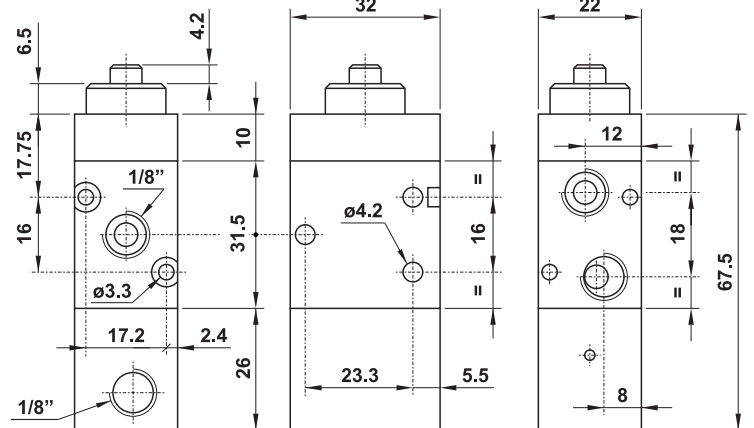
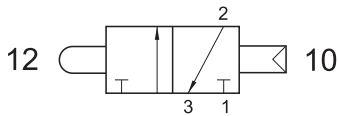
## US521 2P

5/2 1/8" NPT double tappet



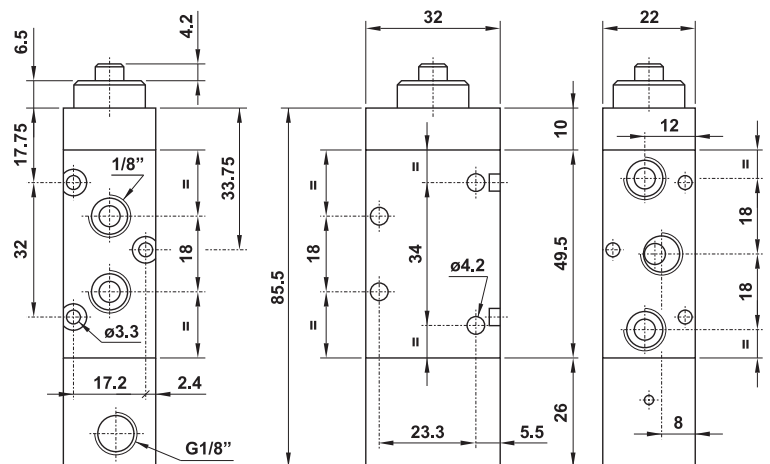
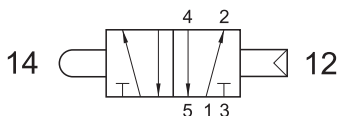
## US321 CP

3/2 1/8" NPT tappet - separate pneumatically piloted return



## US521 CP

5/2 1/8" NPT tappet - separate pneumatically piloted return

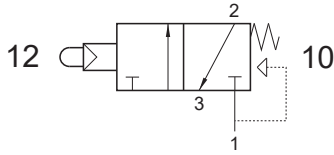


# Mechanically actuated valves - 1/8"



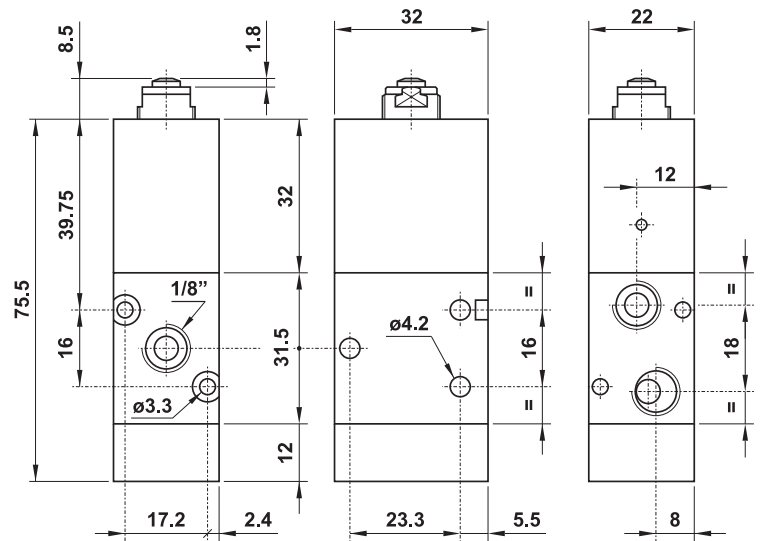
## US321 MPS

3/2 1/8" NPT N/C servo-piloted tappet - air and spring return



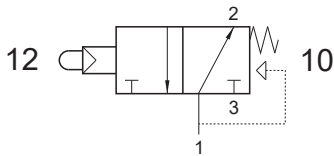
Actuating force related to inlet pressure

$P_1$ : 2.5 bar (36 PSI)     $P_1$ : 10 bar (145 PSI)  
 F: 4.5 N                      F: 14.2 N



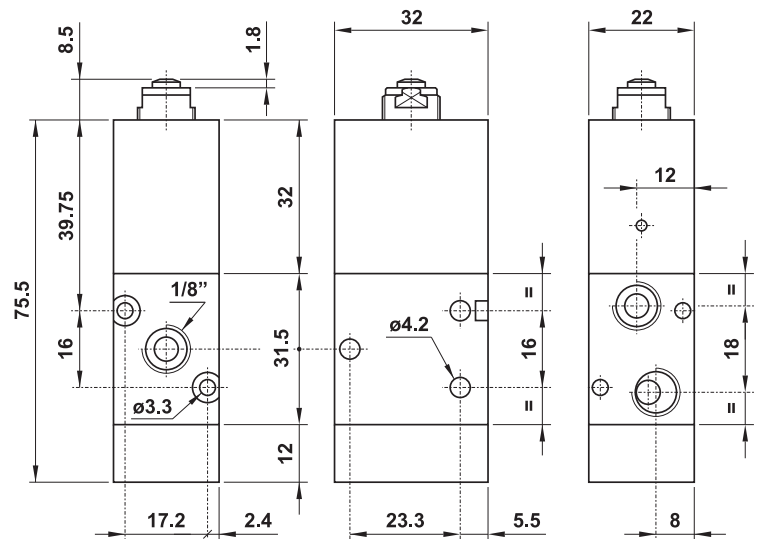
## US321 MPSA

3/2 1/8" NPT N/O servo-piloted tappet - air and spring return



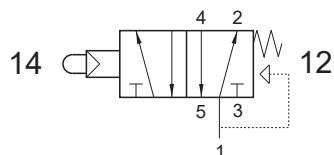
Actuating force related to inlet pressure

$P_1$ : 2.5 bar (36 PSI)     $P_1$ : 10 bar (145 PSI)  
 F: 4.5 N                      F: 14.2 N



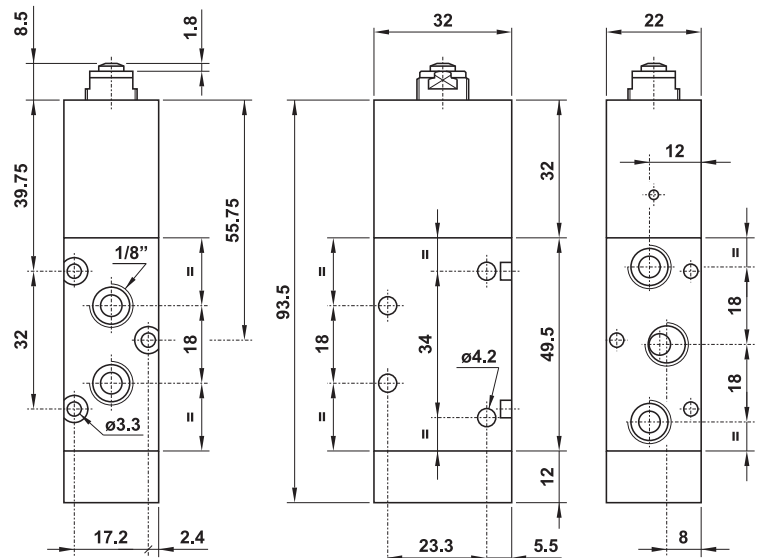
## US521 MPS

5/2 1/8" NPT servo-piloted tappet - air and spring return



Actuating force related to inlet pressure

$P_1$ : 2.5 bar (36 PSI)     $P_1$ : 10 bar (145 PSI)  
 F: 4.5 N                      F: 14.2 N

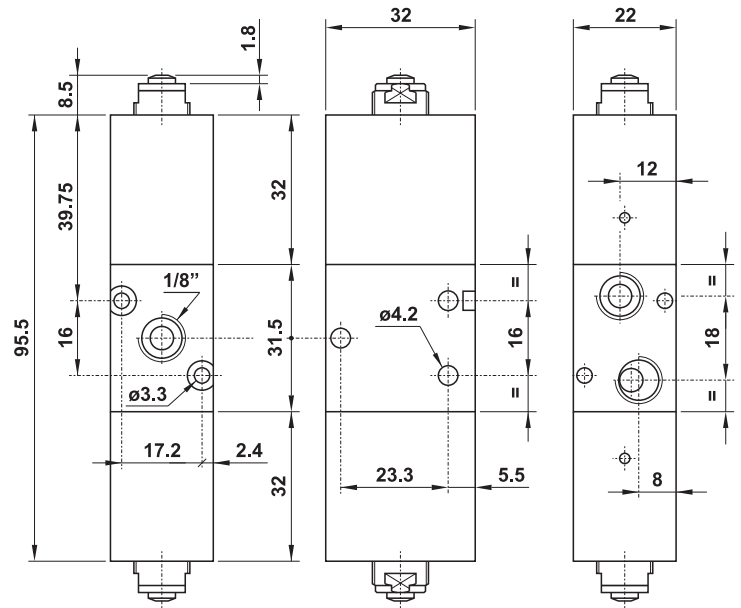
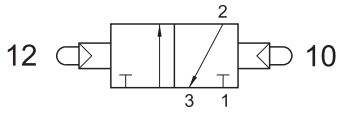


# Mechanically actuated valves - 1/8"



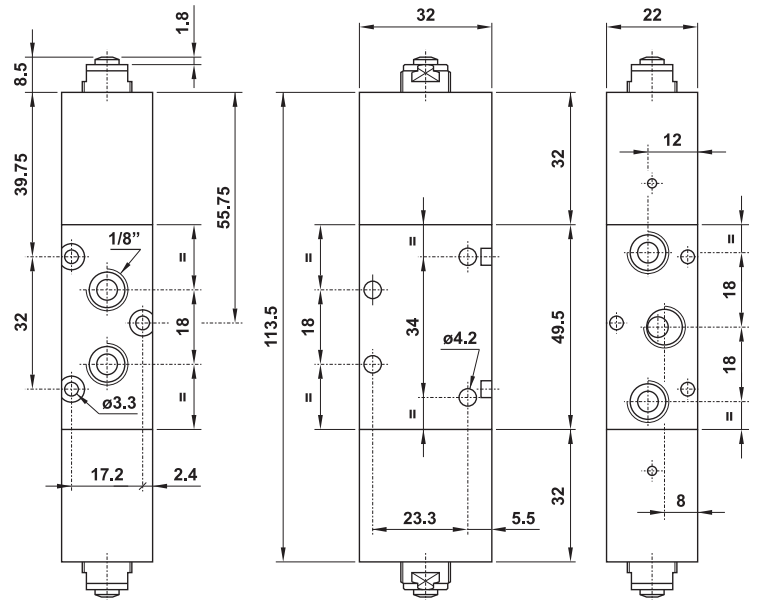
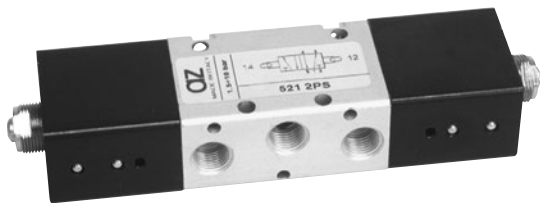
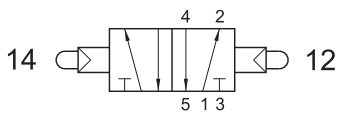
## US321 2PS

3/2 1/8" NPT double servo-piloted tappet



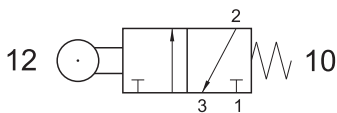
## US521 2PS

5/2 1/8" NPT double servo-piloted tappet

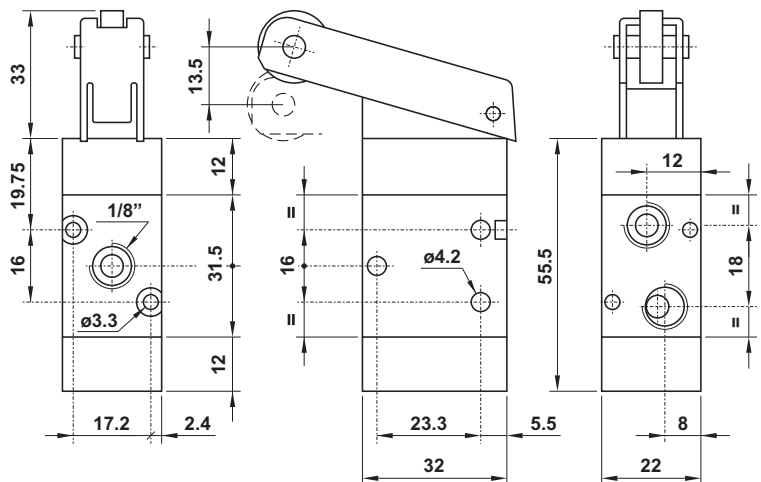


## US321 MR

3/2 1/8" NPT roller lever - spring return



Actuating force: 9.81 N

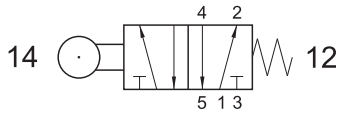


# Mechanically actuated valves - 1/8"

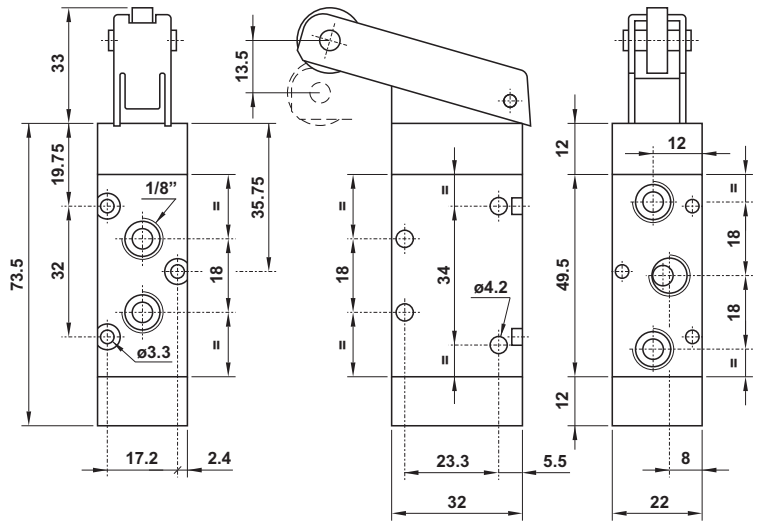


## US521 MR

5/2 1/8" NPT roller lever - spring return

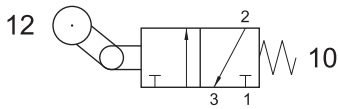


Actuating force: 9.81 N

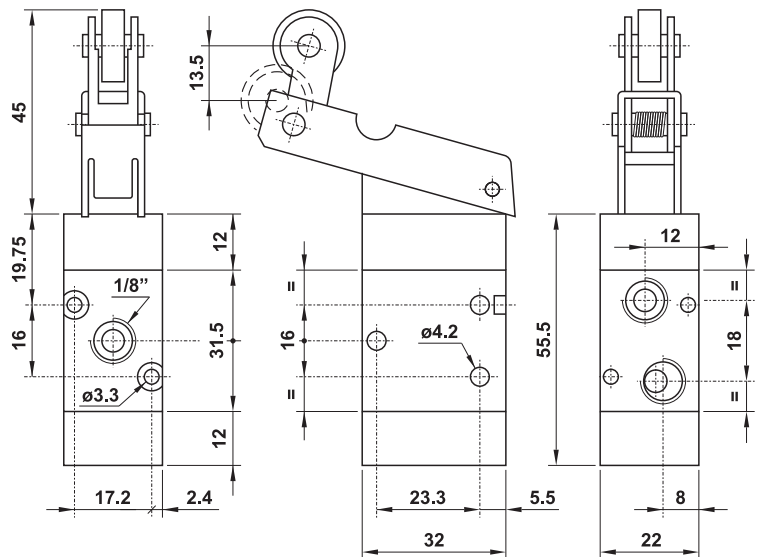


## US321 MRU

3/2 1/8" NPT uni-directional lever - spring return

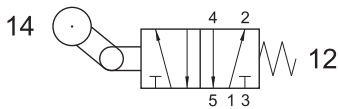


Actuating force: 9.81 N

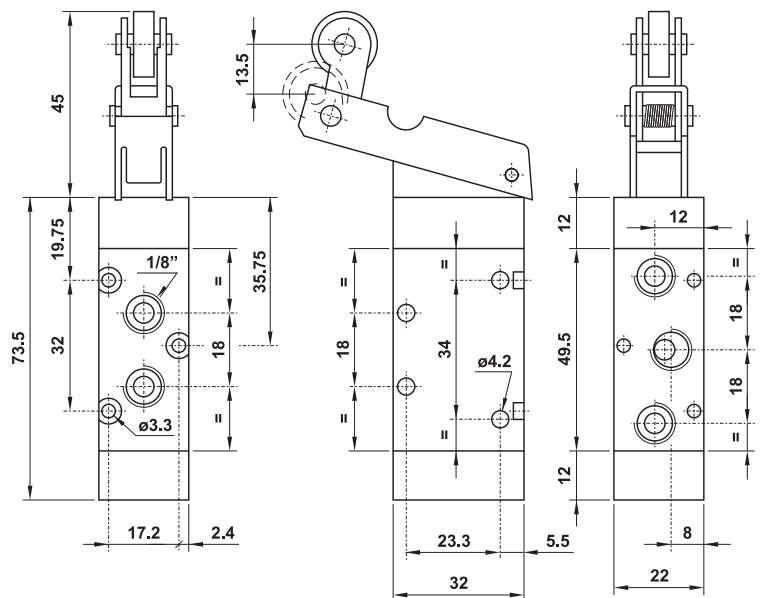


## US521 MRU

5/2 1/8" NPT uni-directional lever - spring return



Actuating force: 9.81 N

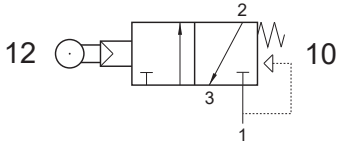


# Mechanically actuated valves - 1/8"



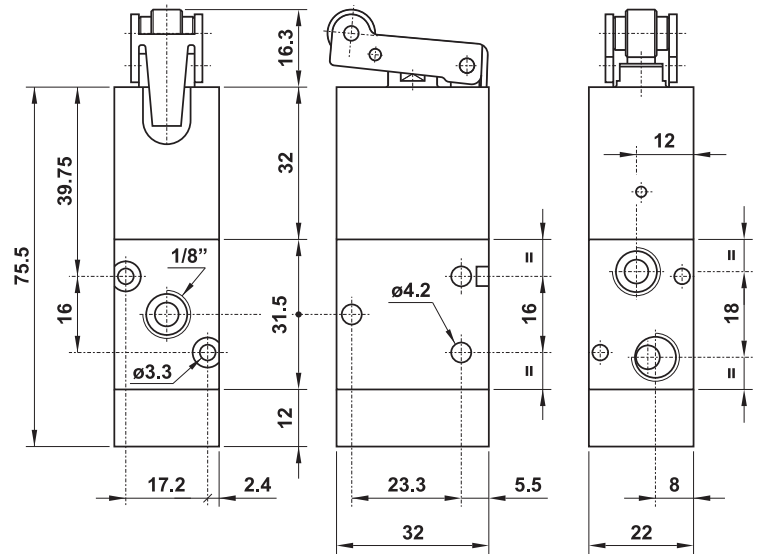
## US321 MRS

3/2 1/8" NPT N/C servo-piloted roller lever - air and spring return



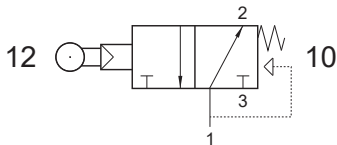
Actuating force related to inlet pressure

$P_1$ : 2.5 bar (36 PSI)    $P_1$ : 10 bar (145 PSI)  
 F: 3.6 N                      F: 11.4 N



## US321 MRSA

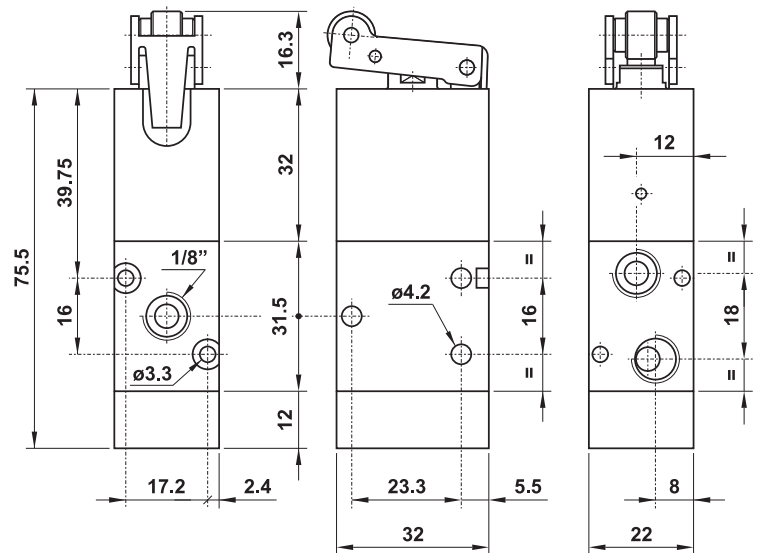
3/2 1/8" NPT N/O servo-piloted roller lever - air and spring return



Actuating force related to inlet pressure

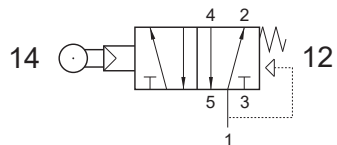
$P_1$ : 2.5 bar (36 psi)    $P_1$ : 10 bar (145 psi)  
 F: 3.6 N                      F: 11.4 N

ONLY ALUMINIUM VERSION



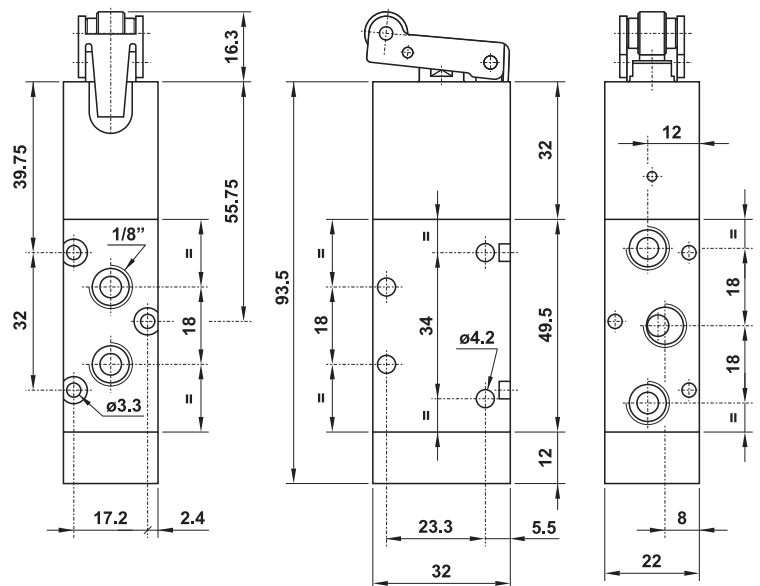
## US521 MRS

5/2 1/8" NPT servo-piloted roller lever - air and spring return



Actuating force related to inlet pressure

$P_1$ : 2.5 bar (36 PSI)    $P_1$ : 10 bar (145 PSI)  
 F: 3.6 N                      F: 11.4 N

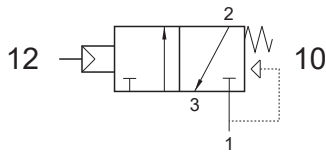


# Mechanically actuated valves - 1/8"



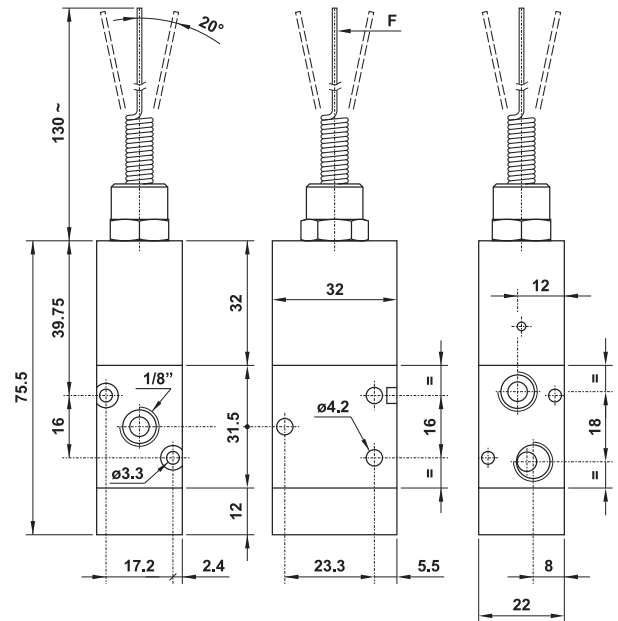
## US321 MN

3/2 1/8" NPT N/C servo-piloted whisker - air and spring return



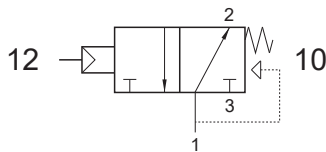
Actuating force related to inlet pressure

$P_1$ : 2.5 bar (36 psi)    $P_1$ : 10 bar (145 psi)  
 F: 0.3 N                      F: 0.8 N



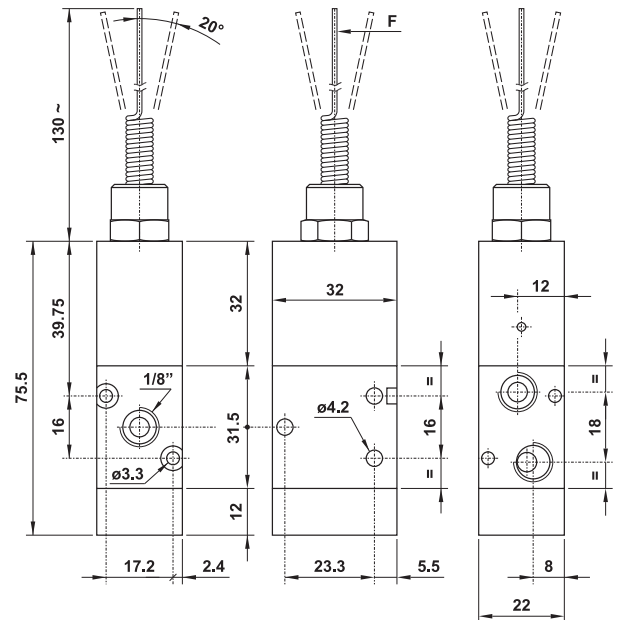
## US321 MNA

3/2 1/8" NPT N/O servo-piloted whisker - air and spring return



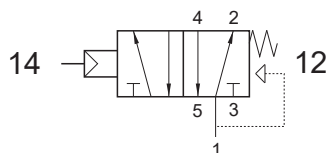
Actuating force related to inlet pressure

$P_1$ : 2.5 bar (36 psi)    $P_1$ : 10 bar (145 psi)  
 F: 0.3 N                      F: 0.8 N



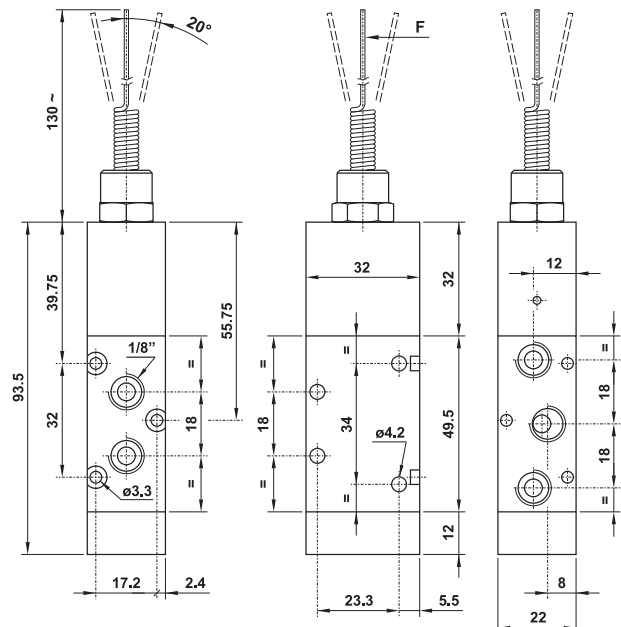
## US521 MN

5/2 1/8" NPT servo-piloted whisker - air and spring return



Actuating force related to inlet pressure

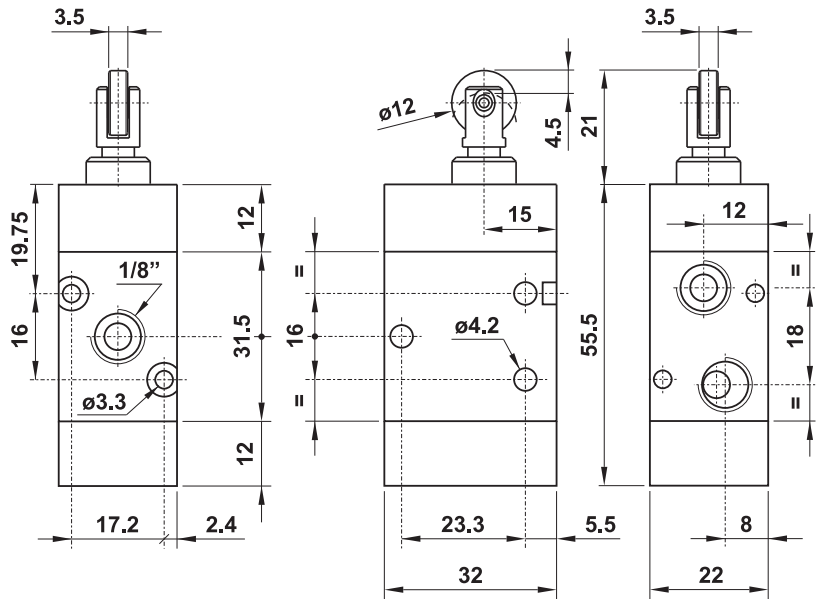
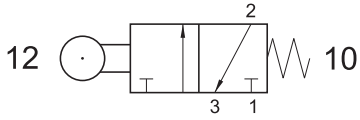
$P_1$ : 2.5 bar (36 psi)    $P_1$ : 10 bar (145 psi)  
 F: 0.3 N                      F: 0.8 N





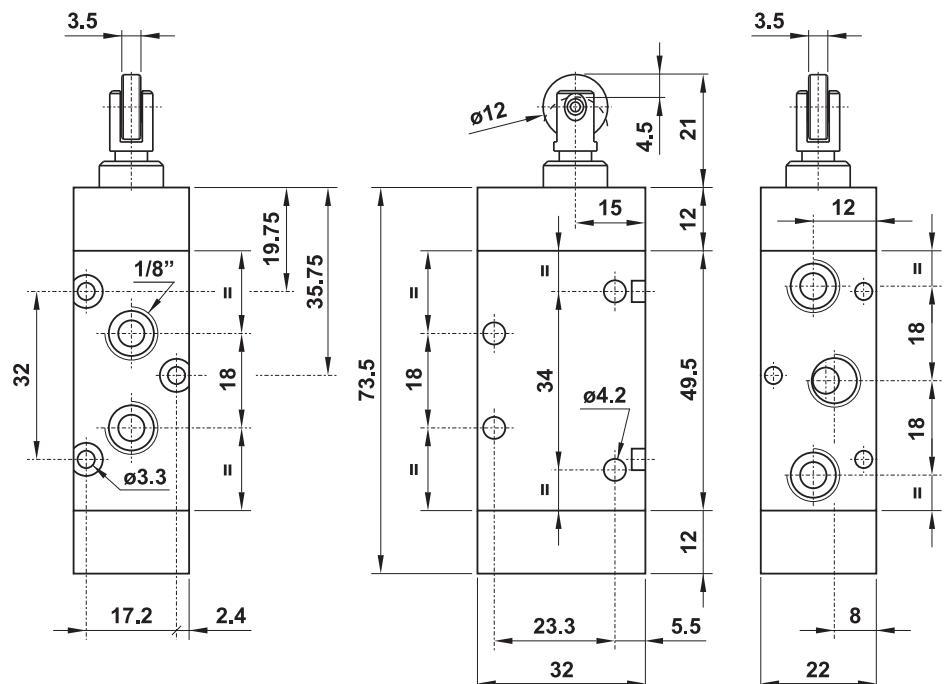
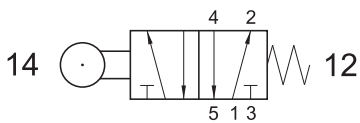
## US321 MYR12

3/2 1/8" NPT tappet with ball bearing - spring return



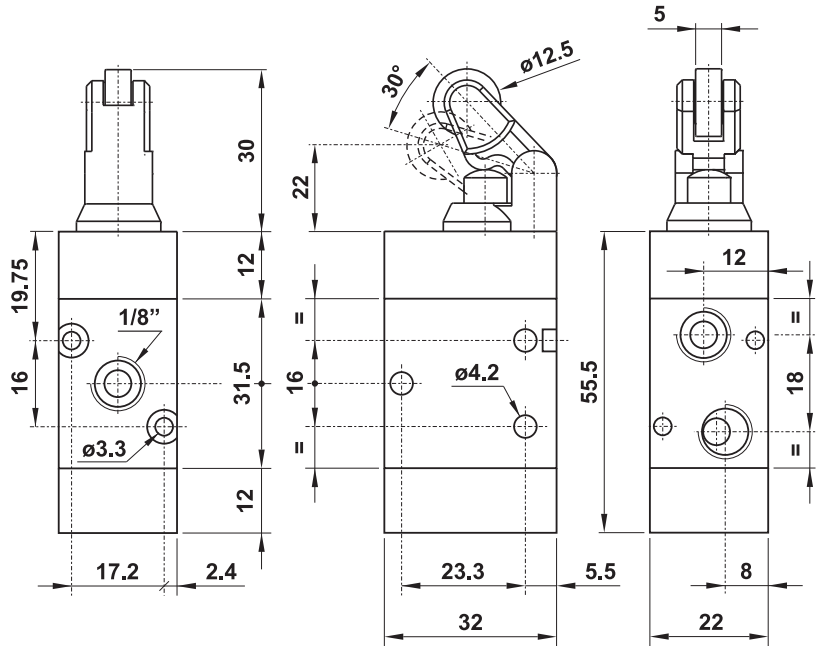
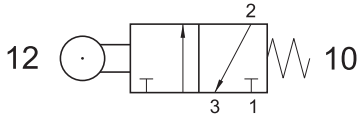
## US521 MYR12

5/2 1/8" NPT tappet with ball bearing - spring return



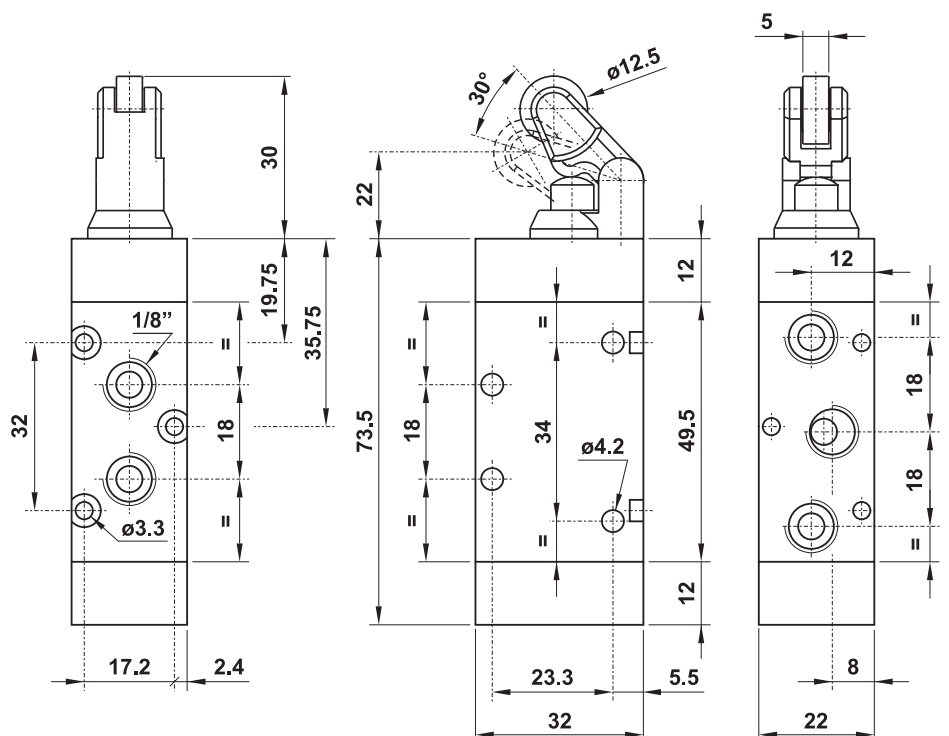
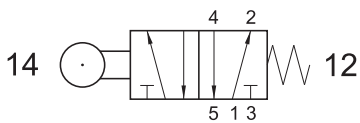
## US321 MYR31

3/2 1/8" NPT roller lever - spring return



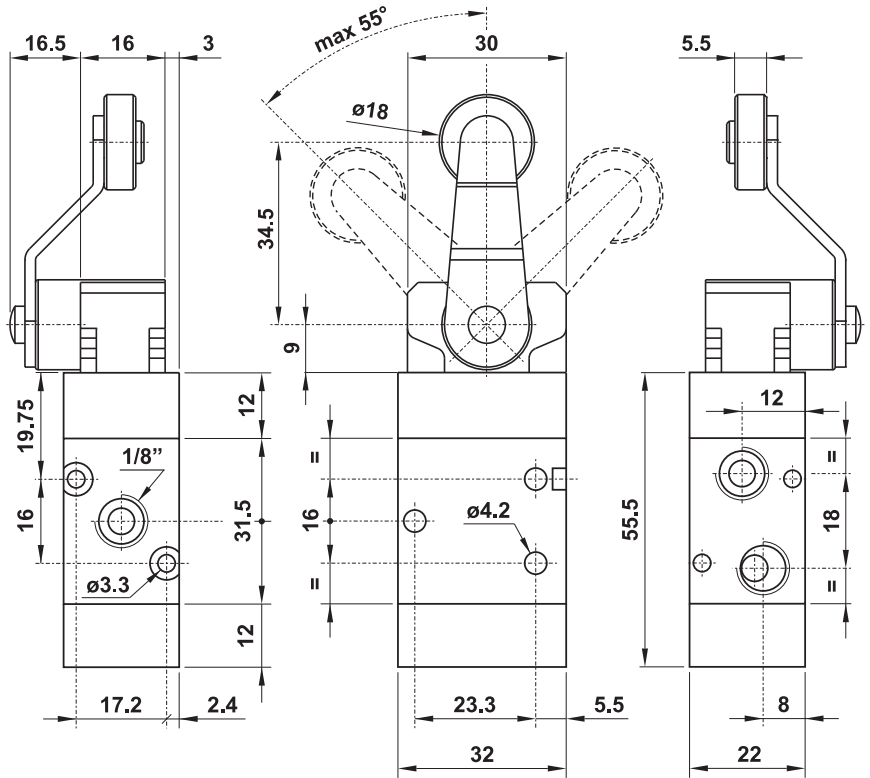
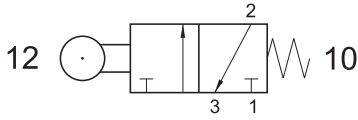
## US521 MYR31

5/2 1/8" NPT roller lever - spring return



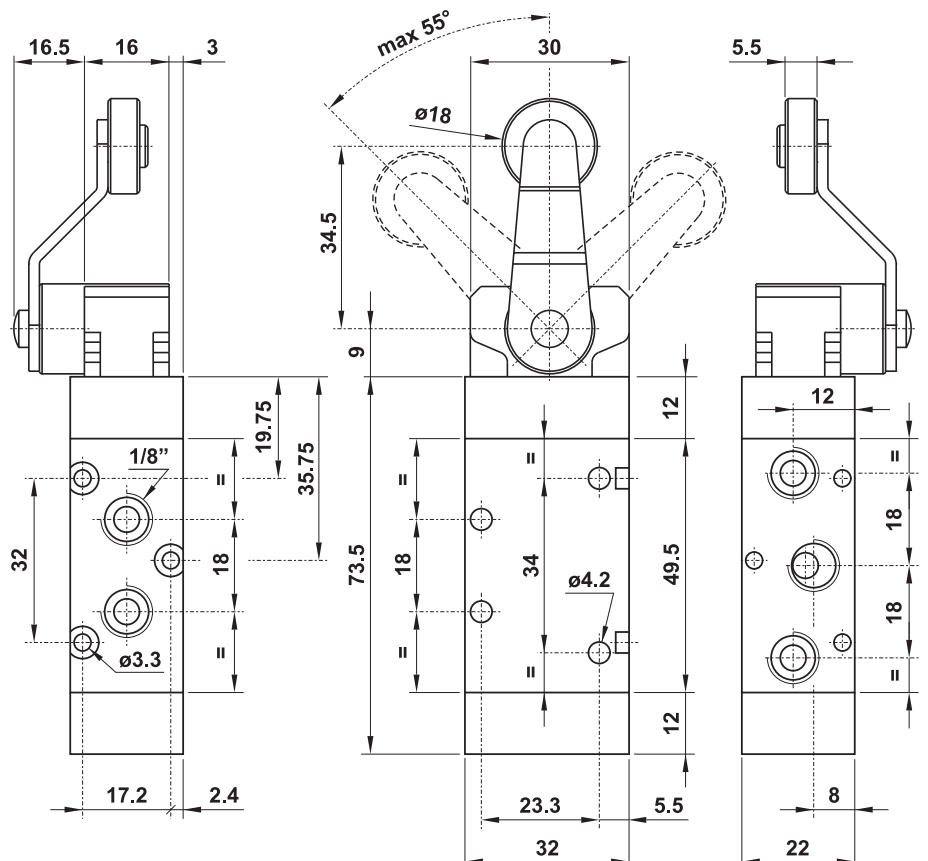
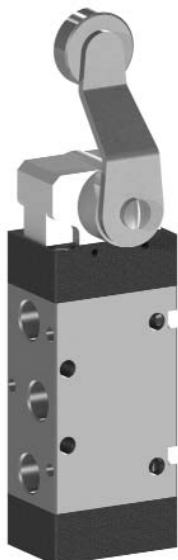
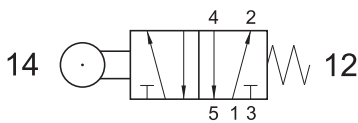
## US321 MYR46

3/2 1/8" NPT roller lever on the side - spring return



## US521 MYR46

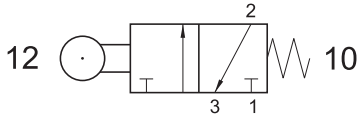
5/2 1/8" NPT roller lever on the side - spring return



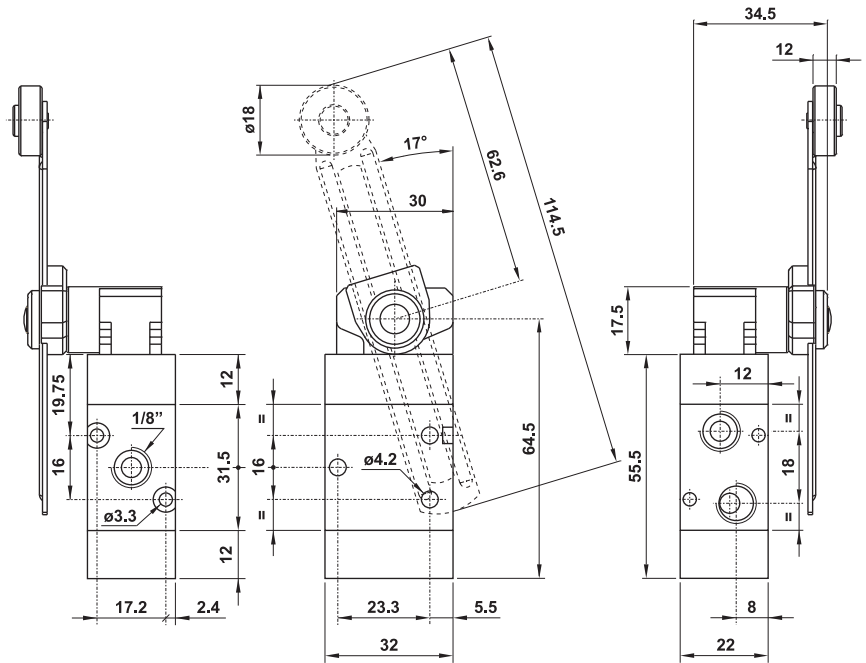


## US321 MYR53

3/2 1/8" NPT roller lever with adjustable shaft - spring return

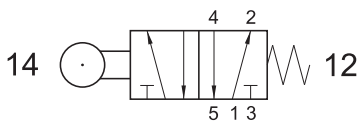


The position and the length of the shaft can be manually adjusted

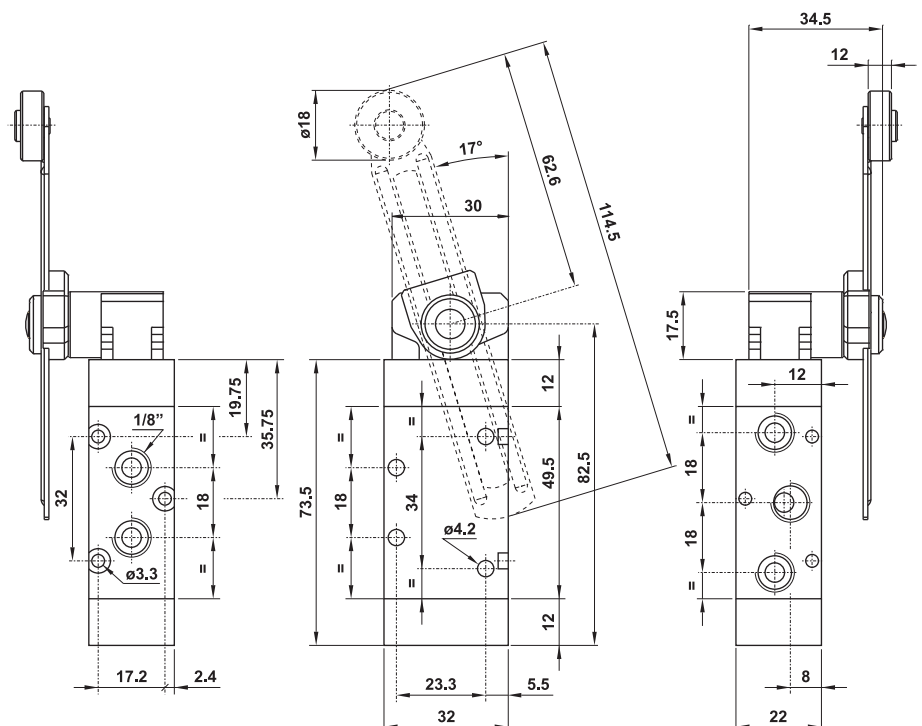


## US521 MYR53

5/2 1/8" NPT roller lever with adjustable shaft - spring return



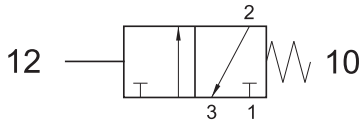
The position and the length of the shaft can be manually adjusted



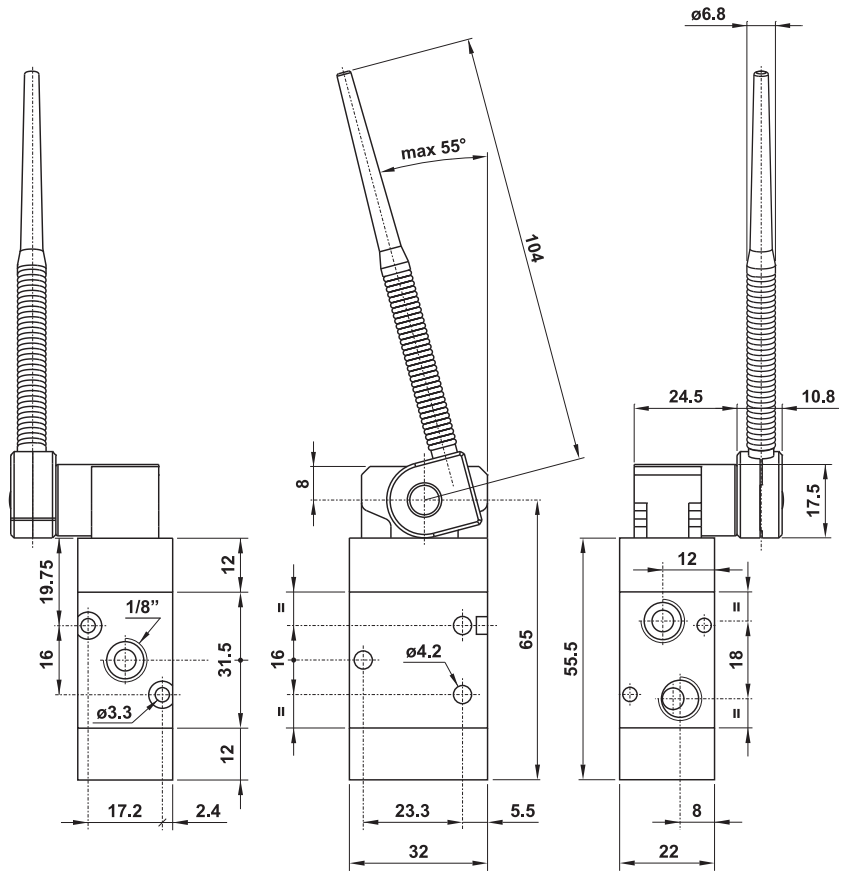


## US321 MYN61

3/2 1/8"NPT adjustable shaft antenna - spring return

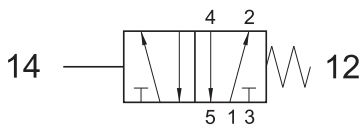


The position and the angle of the shaft can be manually adjusted

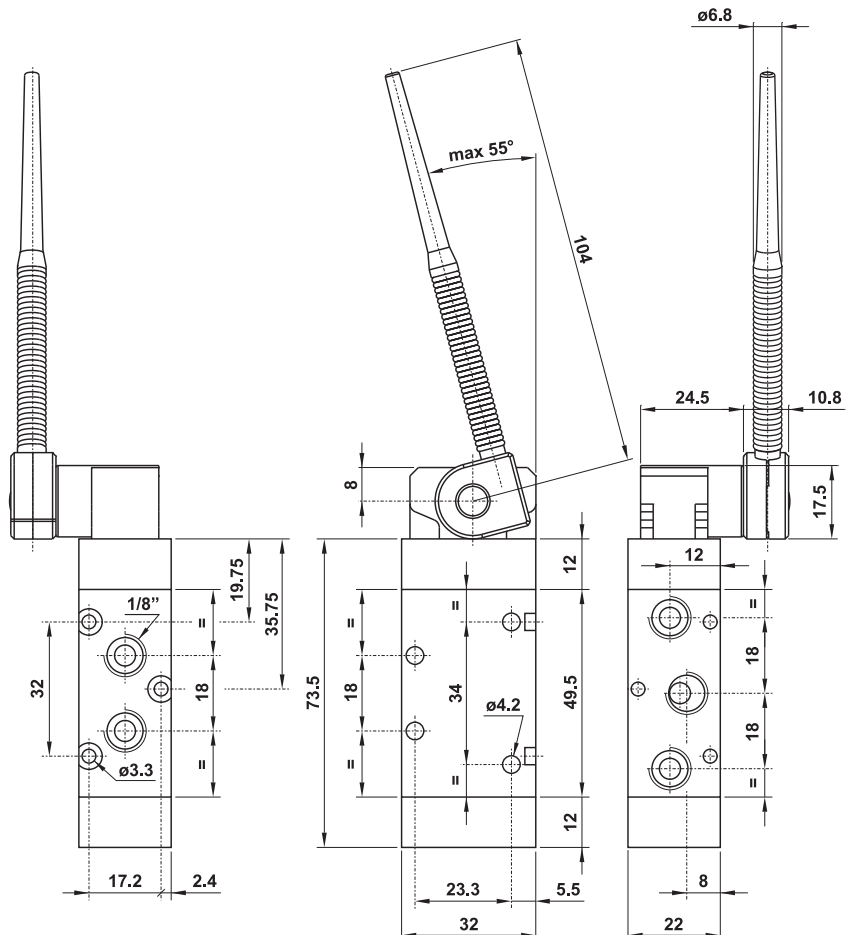


## US521 MYN61

5/2 1/8"NPT adjustable shaft antenna - spring return



The position and the angle of the shaft can be manually adjusted

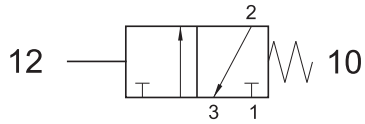


# Mechanically actuated valves - 1/8"



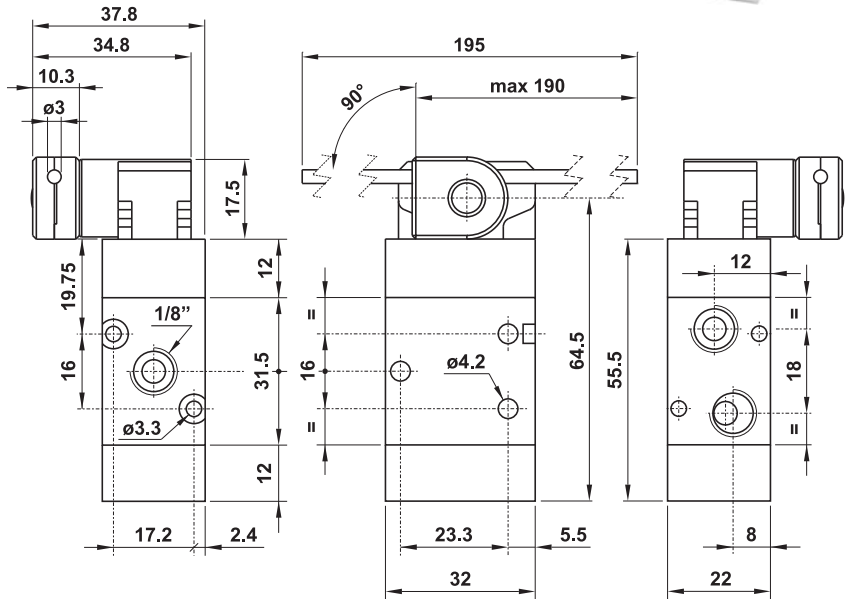
## US321 MYN71

3/2 1/8"NPT adjustable  $\varnothing 3$  shaft - spring return



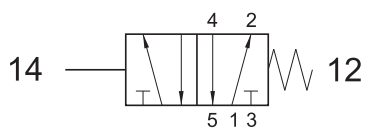
Material of the shaft: stainless steel

The position of the shaft can be manually adjusted



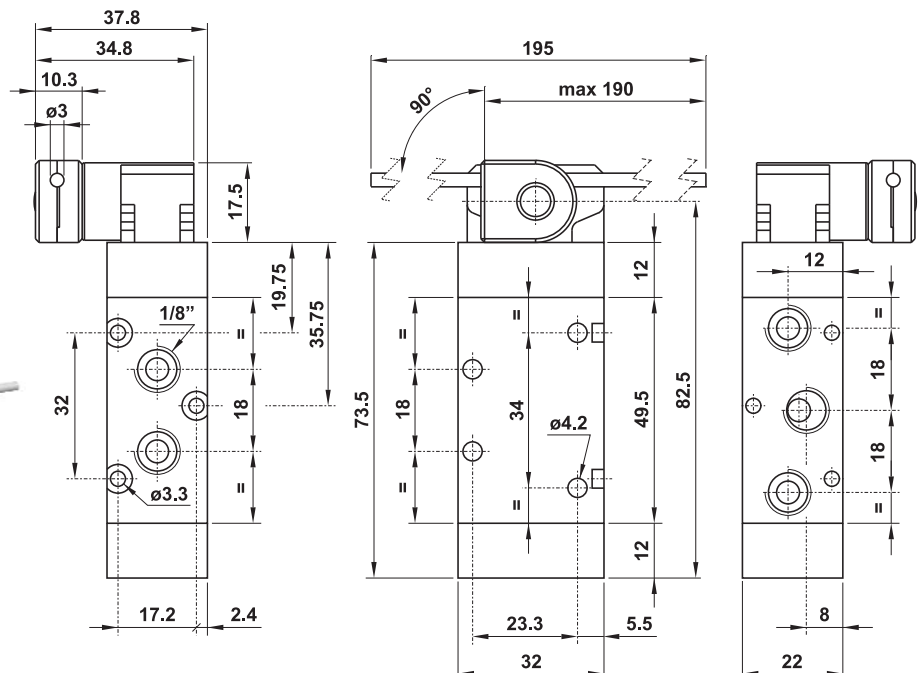
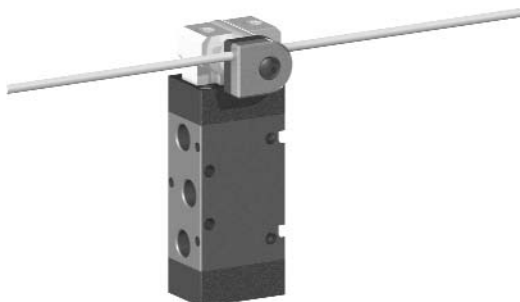
## US521 MYN71

5/2 1/8"NPT rotary adjustable  $\varnothing 3$  shaft - spring return



Material of the shaft: stainless steel

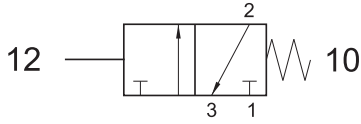
The position of the shaft can be manually adjusted





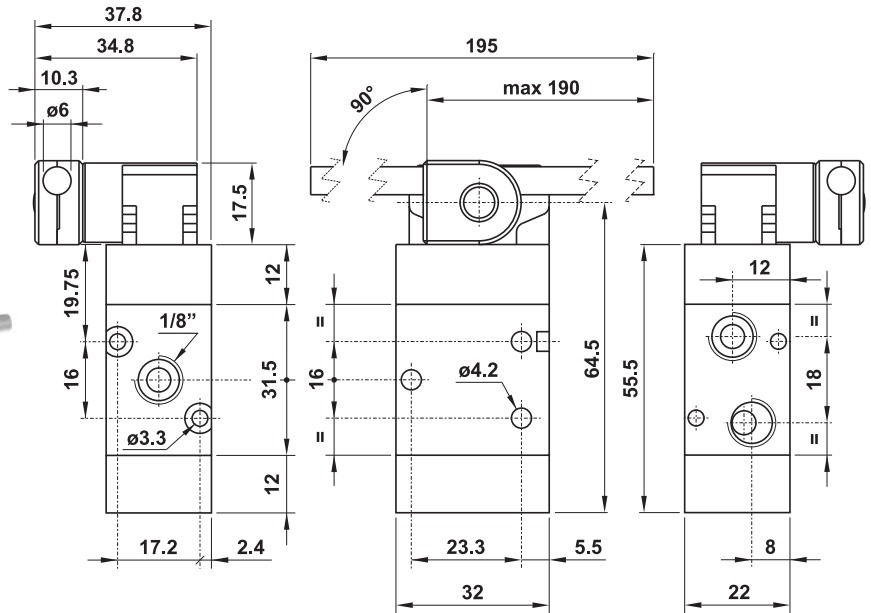
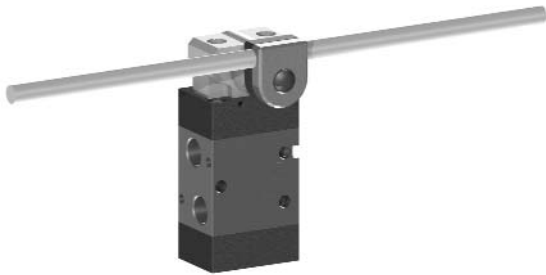
## US321 MYN74

3/2 1/8"NPT adjustable  $\phi 6$  shaft - spring return



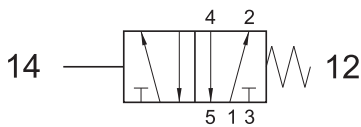
Material of the shaft: glass fiber

The position of the shaft can be manually adjusted



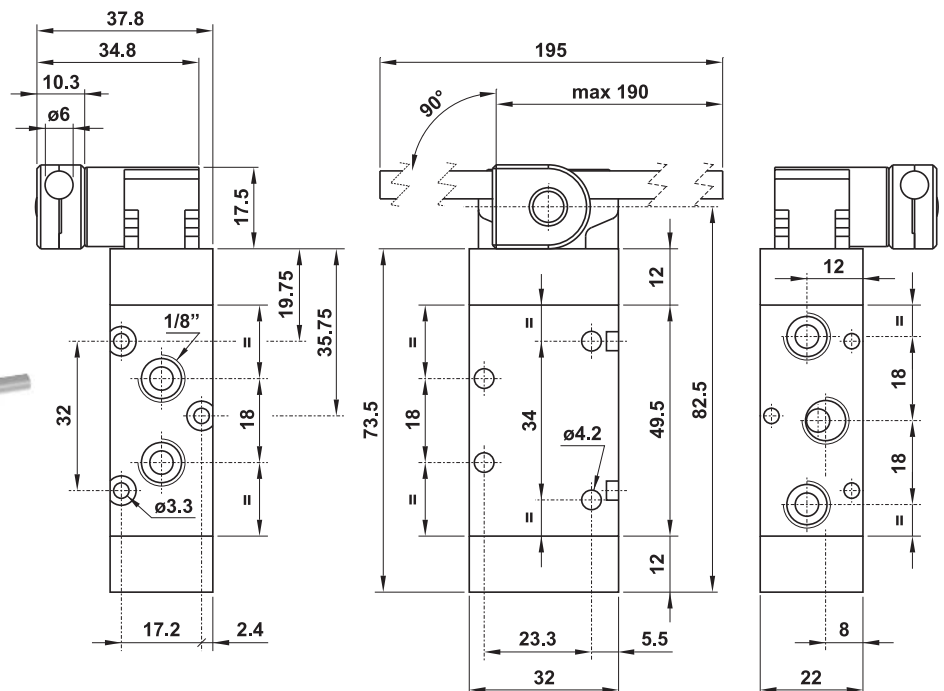
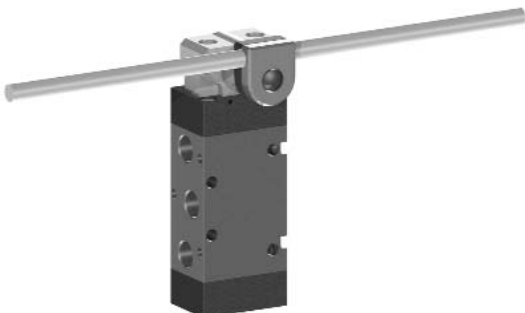
## US521 MYN74

5/2 1/8"NPT adjustable  $\phi 6$  shaft - spring return



Material of the shaft: glass fiber

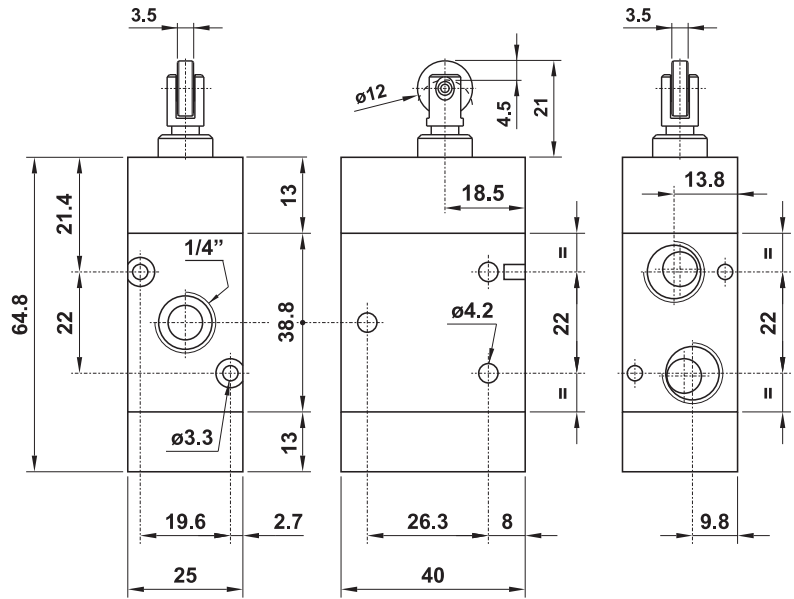
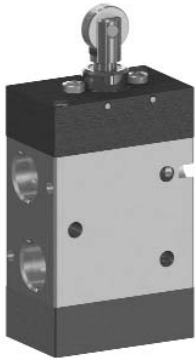
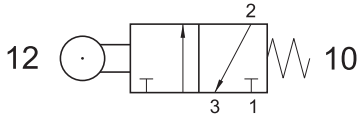
The position of the shaft can be manually adjusted





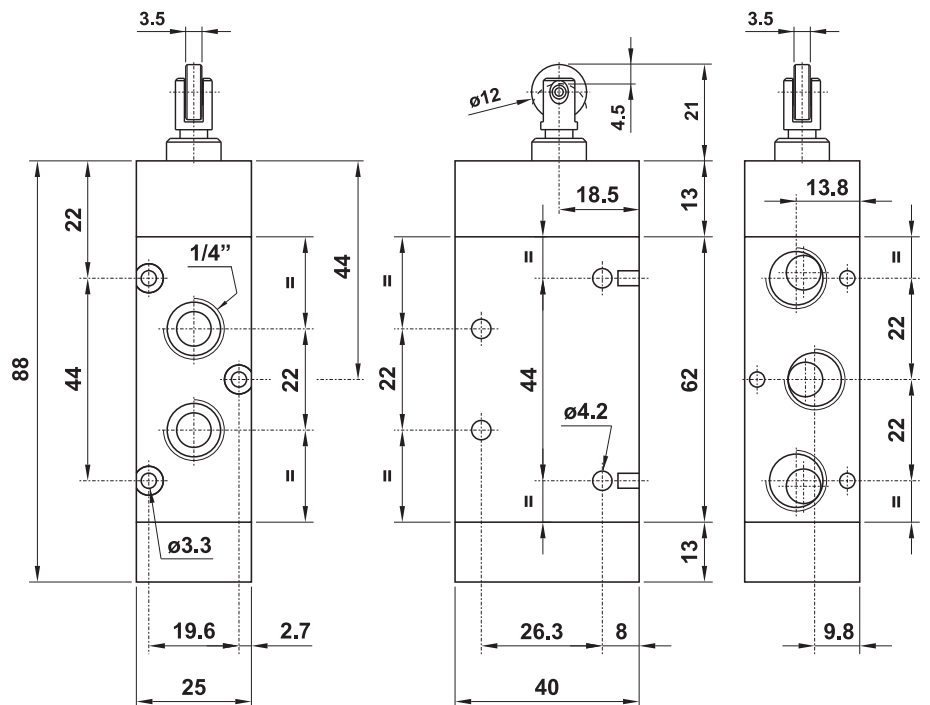
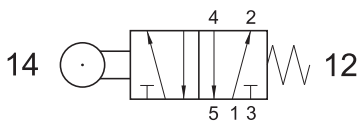
## US322 MYR12

3/2 1/4" NPT tappet with ball bearing - spring return



## US522 MYR12

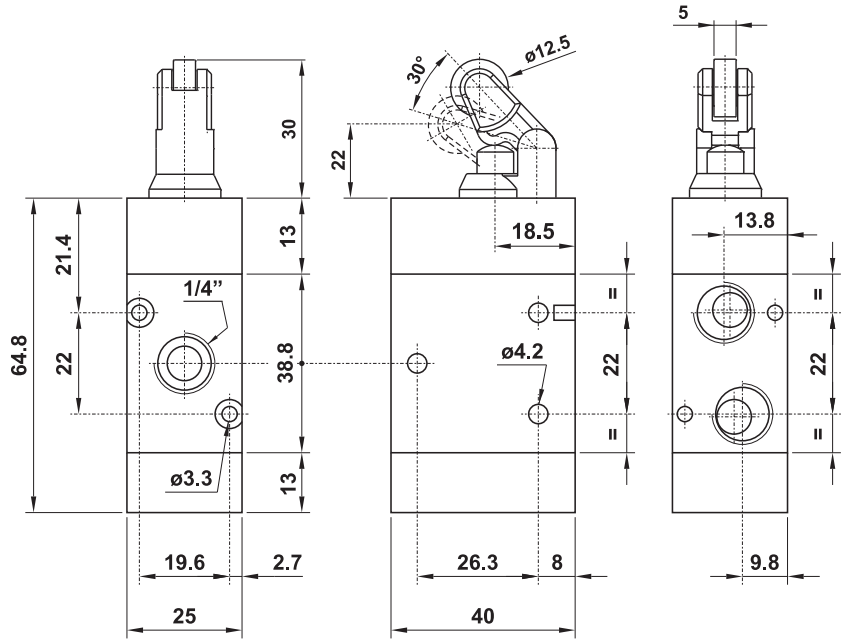
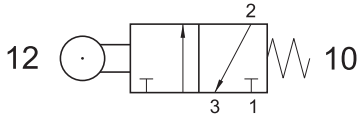
5/2 1/4" NPT tappet with ball bearing - spring return





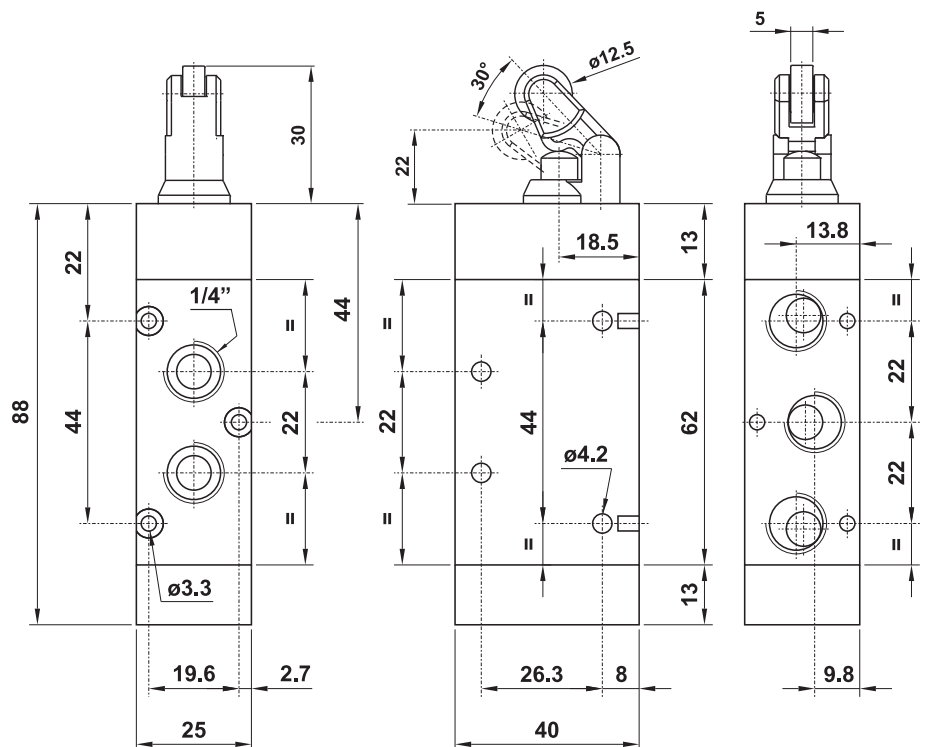
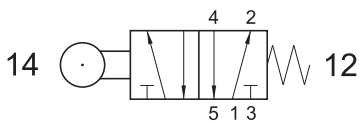
## US322 MYR31

3/2 1/4" roller lever - spring return



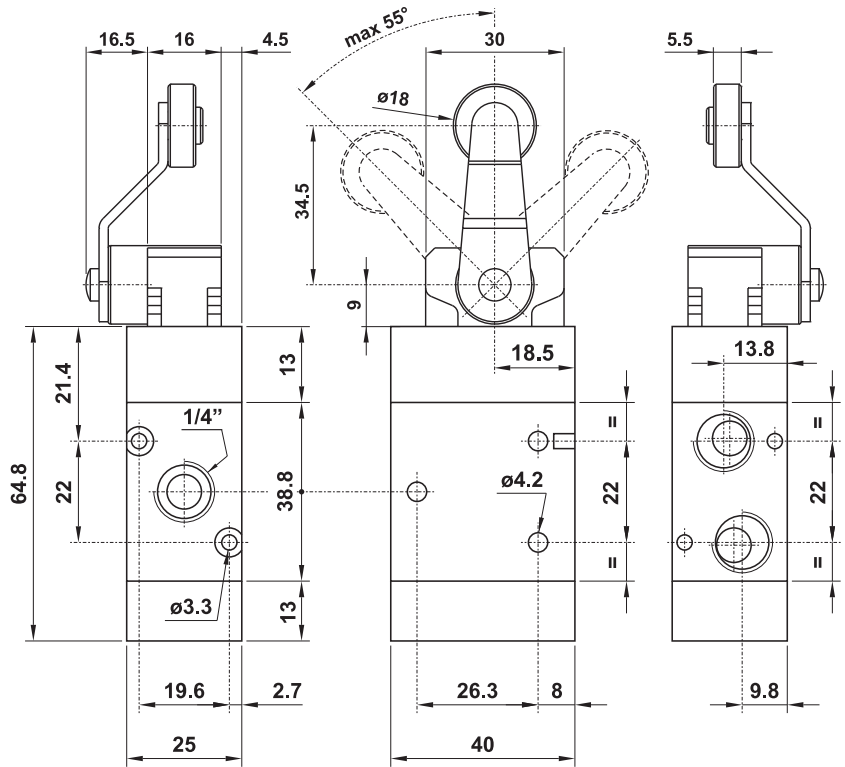
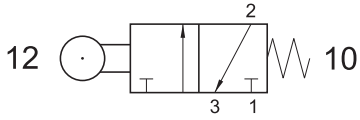
## US522 MYR31

5/2 1/4"NPT roller lever - spring return



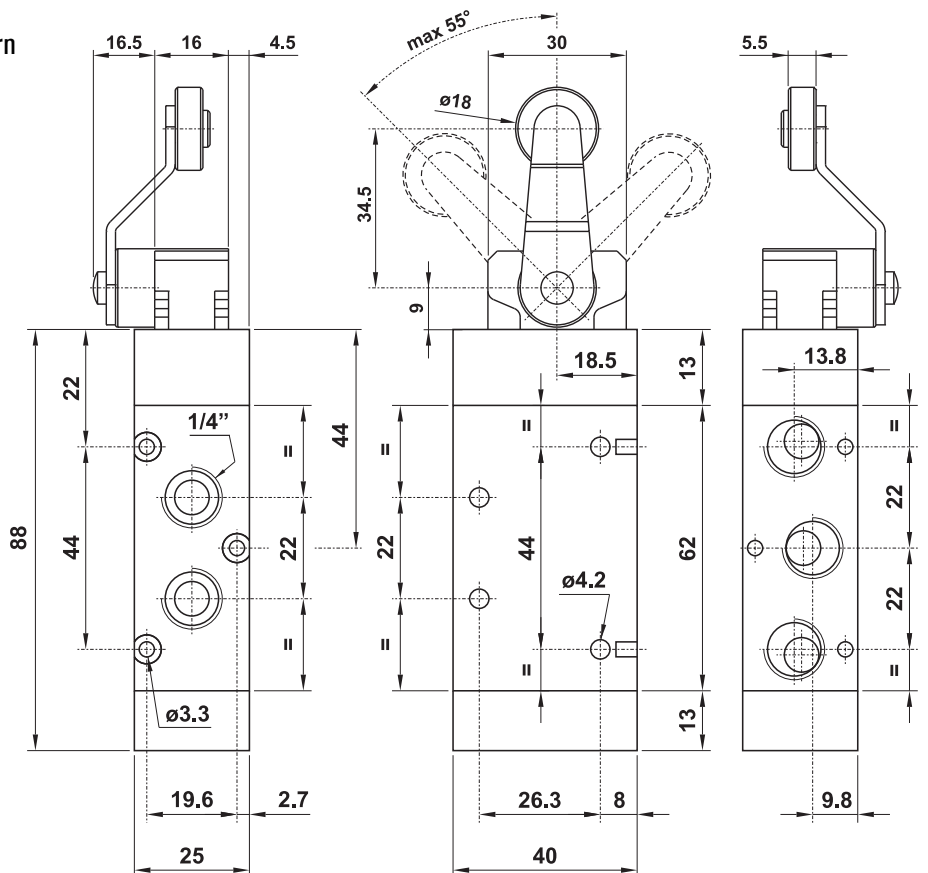
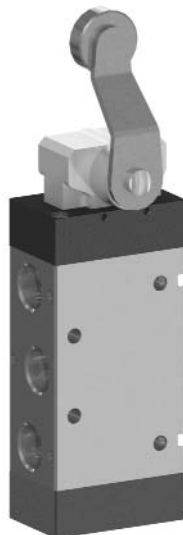
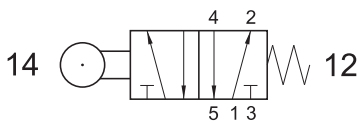
## US322 MYR46

3/2 1/4"NPT roller lever on the side - spring return



## US522 MYR46

5/2 1/4"NPT roller lever on the side - spring return

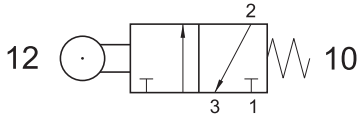


# Mechanically actuated valves - 1/4"

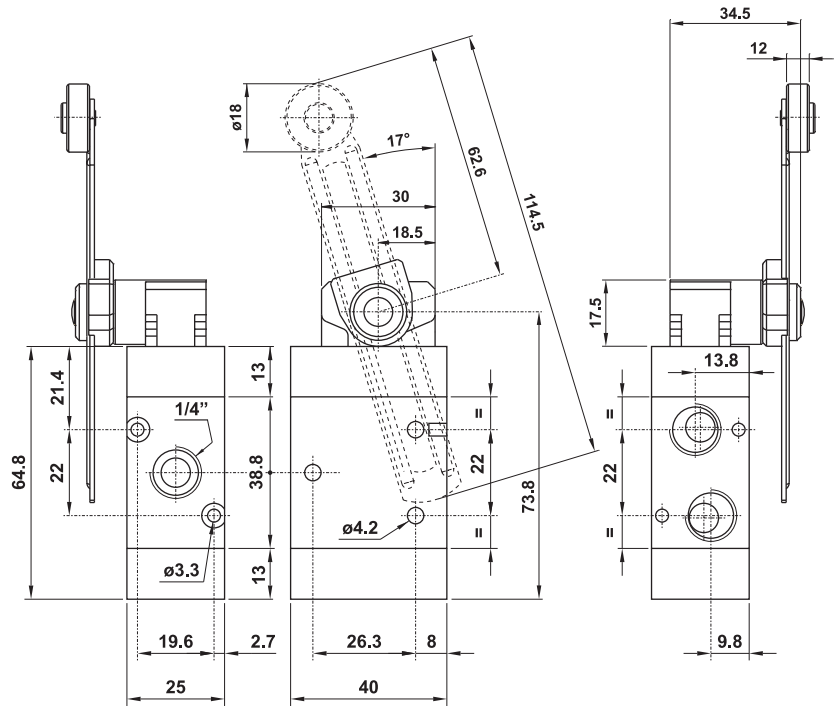


## US322 MYR53

3/2 1/4"NPT roller lever with adjustable shaft - spring return

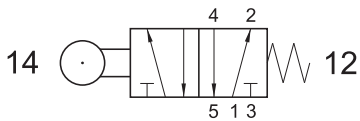


The position and the length of the shaft can be manually adjusted

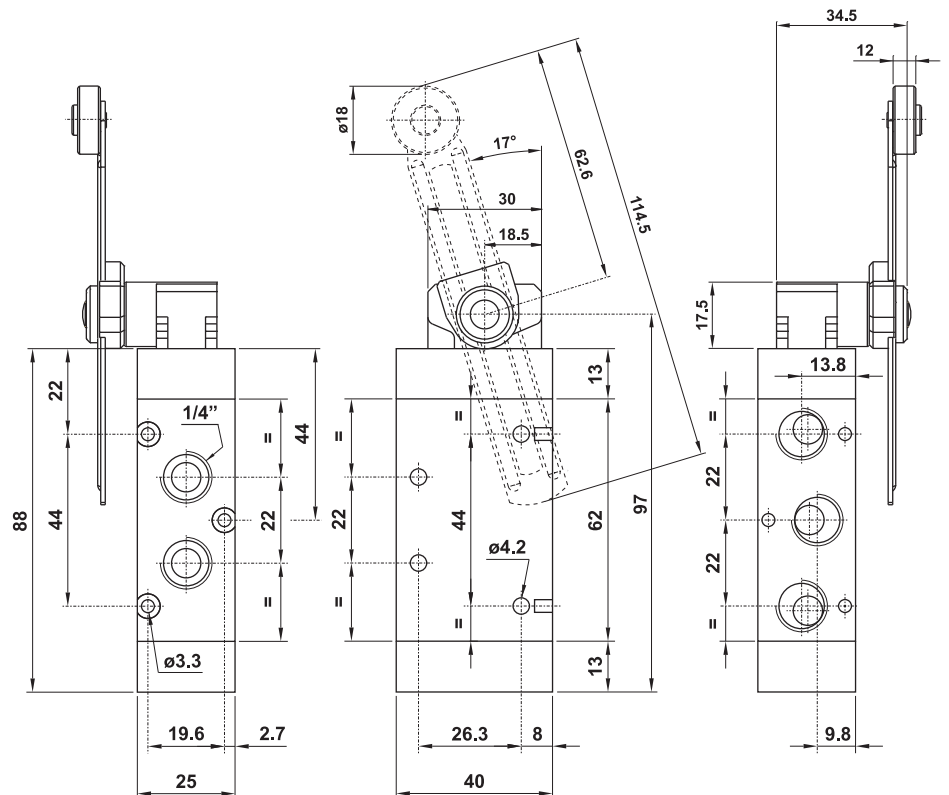


## US522 MYR53

5/2 1/4"NPT roller lever with adjustable shaft - spring return

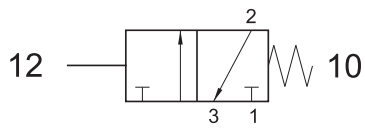


The position and the length of the shaft can be manually adjusted

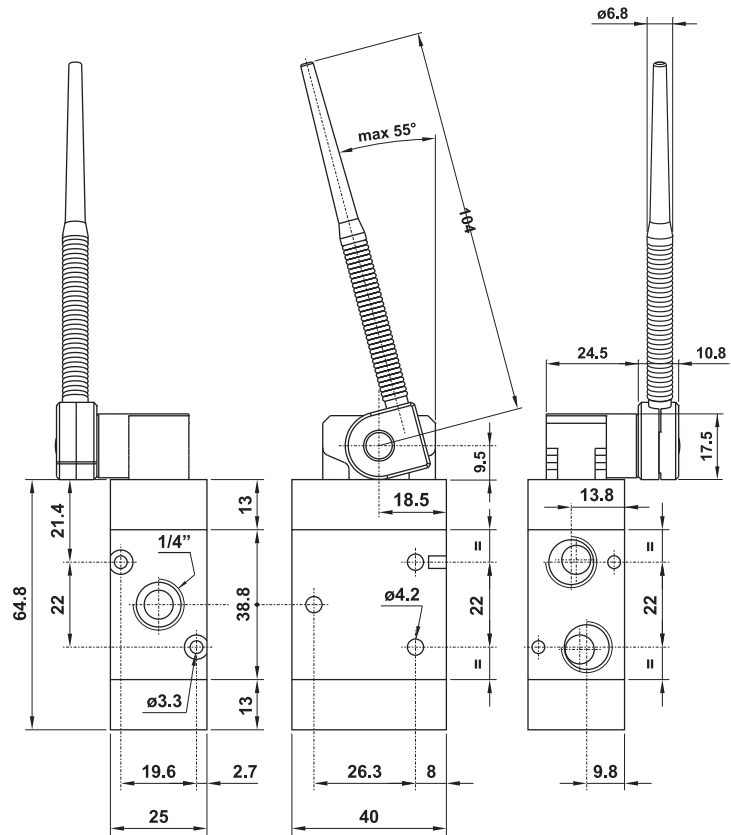


## US322 MYN61

3/2 1/4" NPT adjustable shaft antenna - spring return

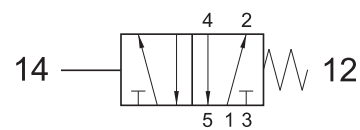


The position and the angle of the shaft can be manually adjusted

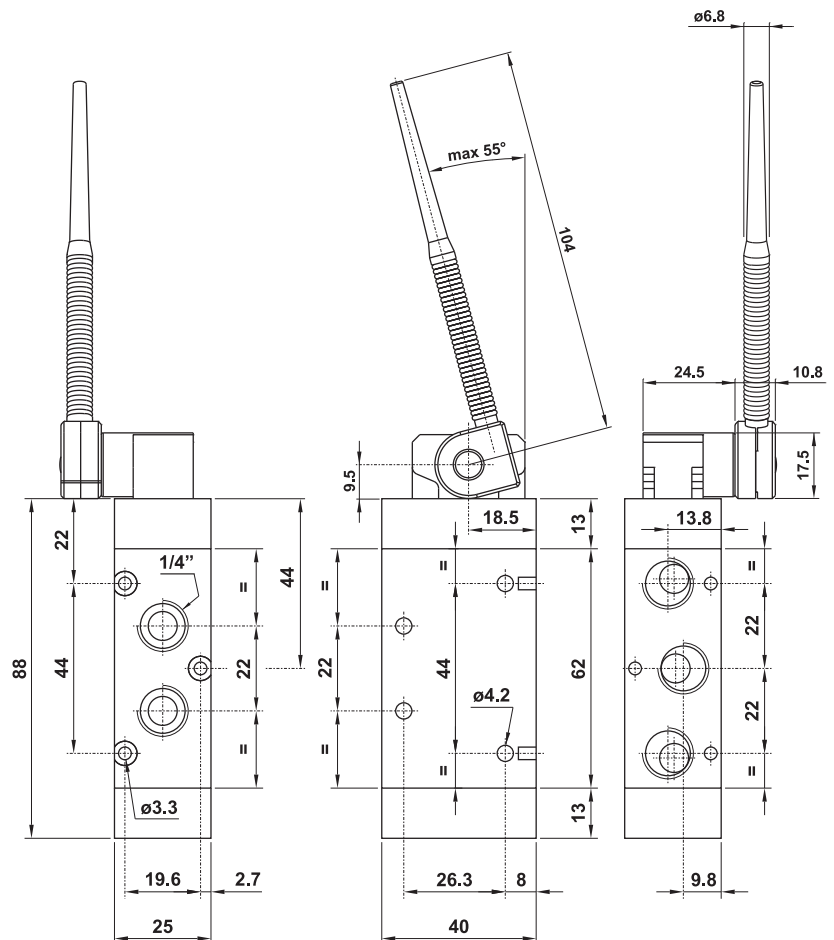


## US522 MYN61

5/2 1/4" NPT adjustable shaft antenna - spring return



The position and the angle of the shaft can be manually adjusted

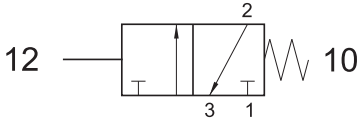


# Mechanically actuated valves - 1/4"



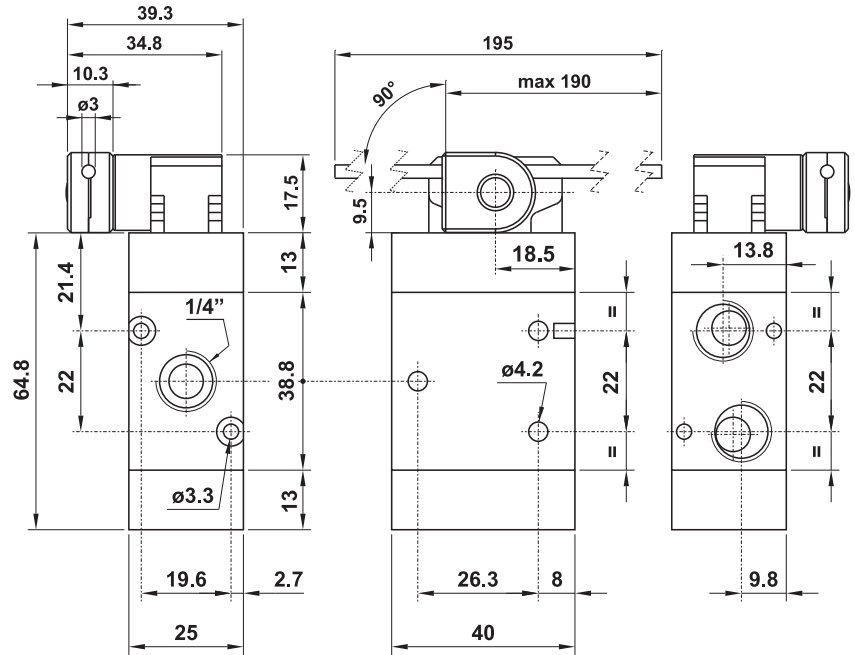
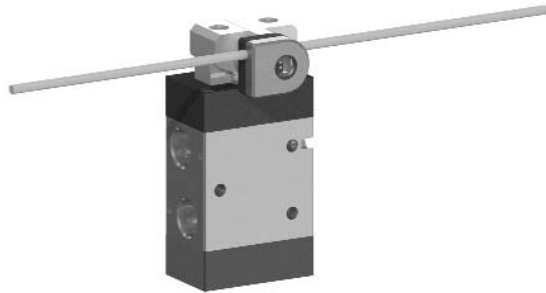
## US322 MYN71

3/2 1/4"NPT adjustable  $\phi$ 3 shaft - spring return



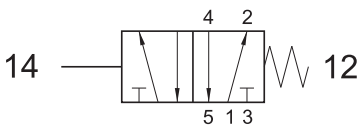
Material of the shaft: stainless steel

The position of the shaft can be manually adjusted



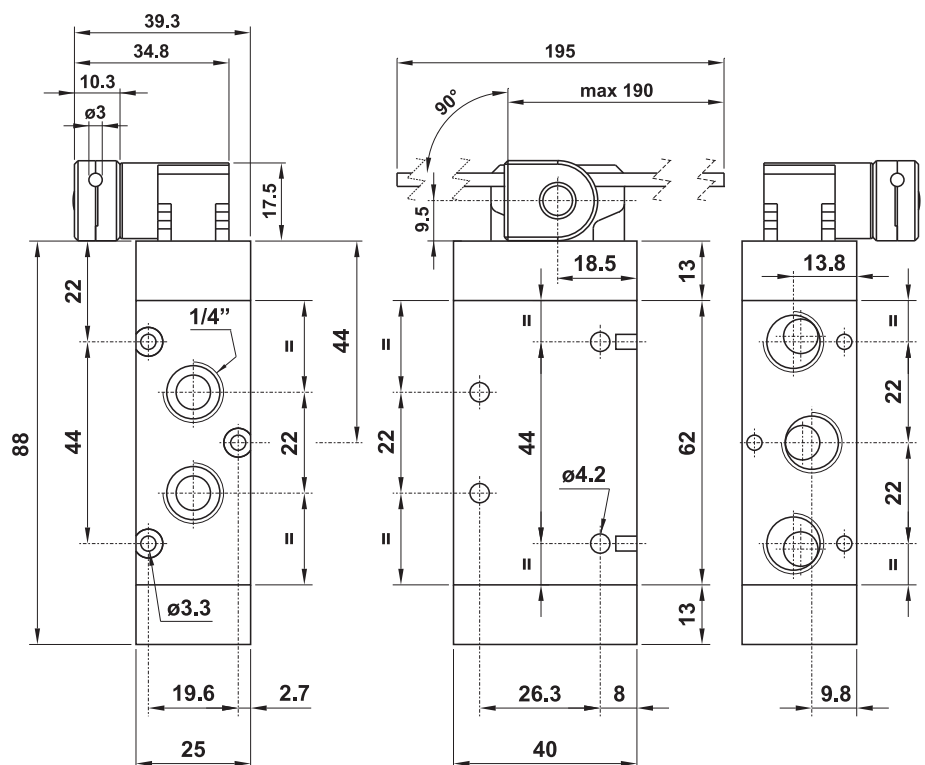
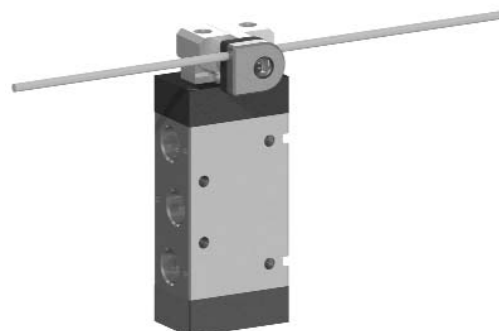
## US522 MYN71

5/2 1/4"NPT adjustable  $\phi$ 3 shaft - spring return



Material of the shaft: stainless steel

The position of the shaft can be manually adjusted

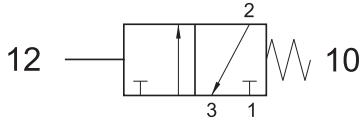


# Mechanically actuated valves - 1/4"



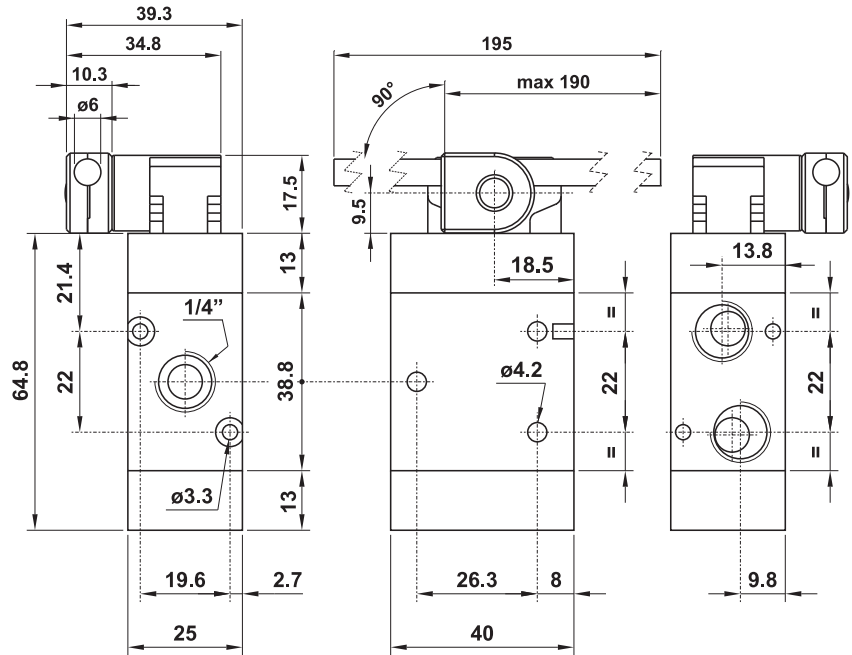
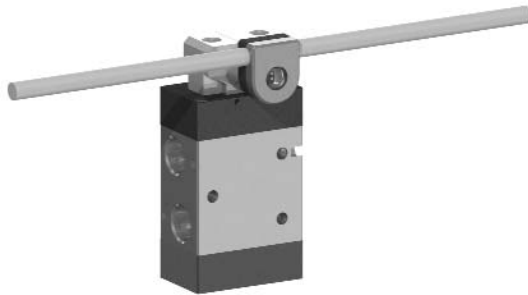
## US322 MYN74

3/2 1/4" NPT adjustable  $\phi 6$  shaft - spring return



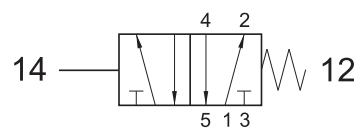
Material of the shaft: glass fiber

The position of the shaft can be manually adjusted



## US522 MYN74

5/2 1/4" NPT adjustable  $\phi 6$  shaft - spring return



Material of the shaft: glass fiber

The position of the shaft can be manually adjusted

