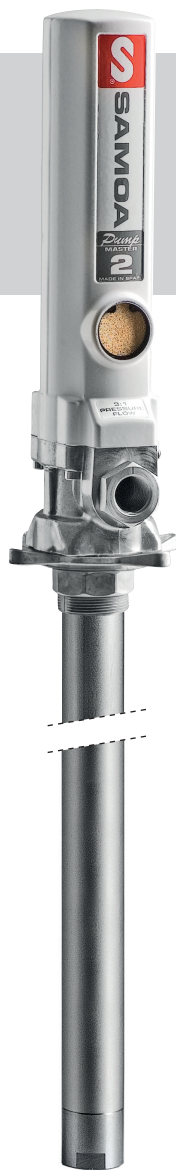


PUMPMASTER 2 - 3:1 RATIO OIL PUMPS

354 120

UTILITY MEDIUM PRESSURE PUMPS

Double acting air operated medium pressure pumps for dispensing lubricants from mobile units, oil distribution packages and small systems. Pumps include 2" BSP (M) height adjustable bung adaptor for tank or drum bung mounting. Built in port for optional pressure relief valve (PN 609 007).



FLUIDS HANDLED

- Synthetic and mineral based lubricants.
- Hydraulic oil.
- Gear oil.
- Transmission fluid.

MARKETS SERVED

- Auto dealers.
- Service shops.
- Fast lube centres.
- Agriculture.
- Marine.
- Mining and construction.

MODELS				
PART No.	APPLICATION	PUMP TUBE HEIGHT	TOTAL HEIGHT	WEIGHT
353 120	Universal stub pump	200 mm	495 mm	2 kg
358 120	60 l (16 gal) drum bung mounted	700 mm	995 mm	3 kg
354 120	205 l (55 gal) drum bung mounted	905 mm	1,200 mm	3.5 kg

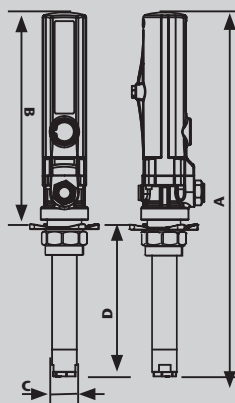
TECHNICAL DATA	
Pump pressure ratio	3:1
Air pressure operating range	1.5 - 10 bar (20 to 140 psi)
Air consumption ⁽¹⁾	180 NL/min (6.4 cfm)
Maximum fluid outlet pressure	30 bar (420 psi)
Air motor diameter	51 mm (2")
Air motor effective diameter	35 mm (1.4")
Air motor stroke	75 mm (3")
Delivery at 200 cycles/min.	10 l/min (2.7 Gal/min)
Maximum free flow delivery ⁽²⁾	35 l/min (9.3 Gal/min)
Air inlet	1/4" BSP (F)
Fluid inlet (short pump only)	3/4" BSP (F)
Fluid outlet	1/2" NPSM (F)
Wetted and seal materials	Aluminium / Steel / NBR / PTFE
Noise level ⁽³⁾	80 dB

(1) Air consumption with 6 bar air inlet pressure and 200 cycles per minute.

(2) Maximum free delivery at 7 bar.

(3) Maximum noise level measured at 1 m from the pump, 7 bar air pressure and free delivery.

DIMENSIONS (mm)			
MODEL	353 120	358 120	354 120
A	495	995	1,200
B	295	295	295
C	34	34	34
D	200	700	905



SAE 30 - 20 °C (68 °F) CAPACITY

