

# 50 Series Floor Closer

## Center Hung, Single or Double Acting

### Non-Handed

#### Installation Instructions



#### ⚠️ WARNING

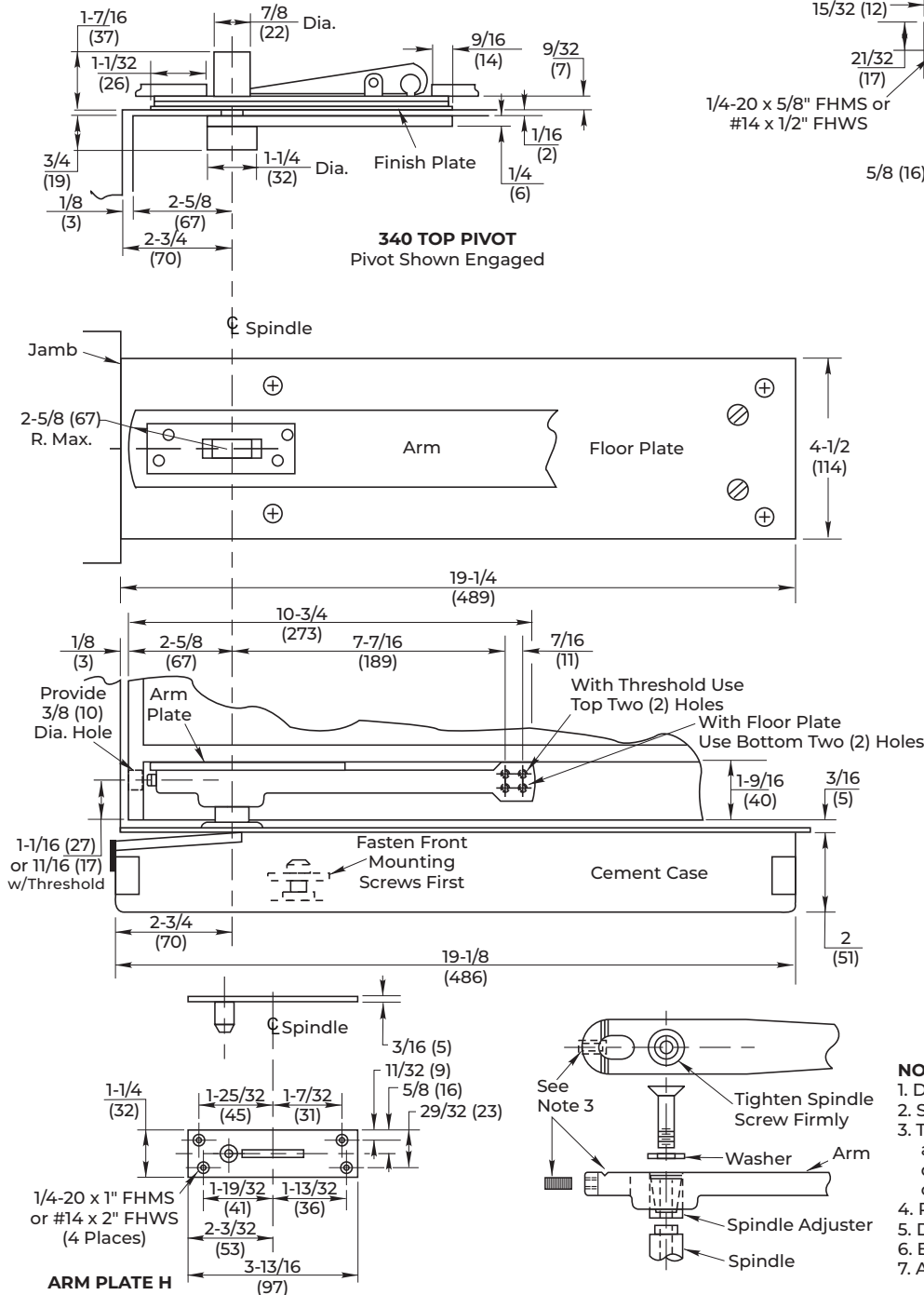
This product can expose you to lead which is known to the state of California to cause cancer and birth defects or other reproductive harm. For more information go to: [www.P65warnings.ca.gov](http://www.P65warnings.ca.gov).

READ AND FOLLOW ALL INSTRUCTIONS.  
SAVE THESE INSTRUCTIONS.

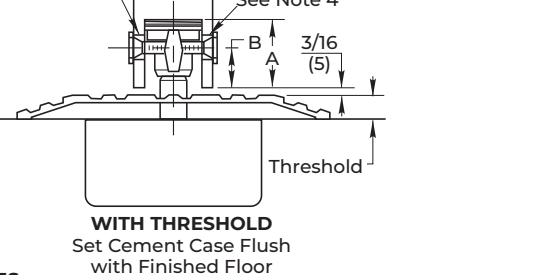
#### CAUTION

Incorrectly installed or improperly adjusted product can cause property damage or personal injury. These instructions should be followed to avoid the possibility of misapplication or misadjustment.

### Template



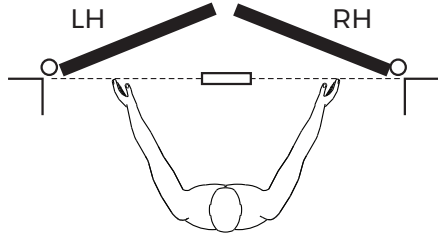
Door Mortised Deep for Arm	A	B
1/4 Threshold	1-13/16 (46)	1-1/8 (29)
1/2 Threshold	1-9/16 (40)	7/8 (22)



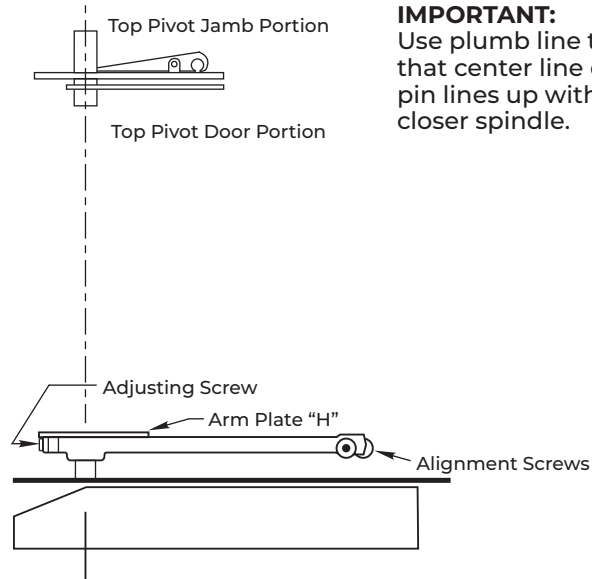
- NOTES:**
- Do not scale drawing.
  - Suitable reinforcing by others.
  - Tighten adjusting screw to notched "V" line on arm to acquire standard initial location of door. Screw moves door towards and away from jamb to equalize door clearances.
  - Provide 5/8" (16) dia. holes for alignment screws (2 places).
  - Do not remove grind plate until closer is installed.
  - External stop by others required.
  - All dimensions given in inches.

## Preparing for Installation

### Determine Hand of Door:



Face a door swinging open away from you.  
If the door opens to the right, it is right hand.  
If the door opens to the left, it is left hand.

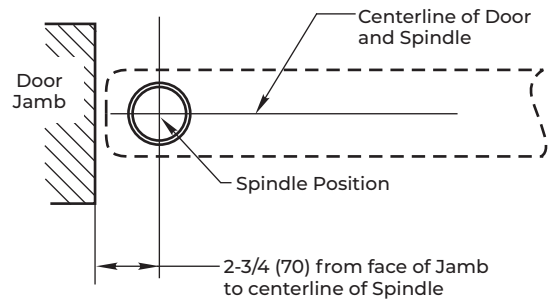


**IMPORTANT:**  
Use plumb line to make sure that center line of top pivot pin lines up with center line of closer spindle.

## Installation Instructions

### A. Locating Closer

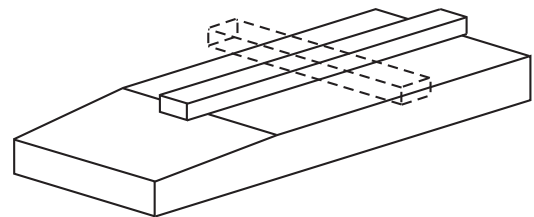
1. Measure 2-3/4" (70mm) out from door jamb on centerline of door. This is the location of the spindle center.



### B. Install Cement Case in Floor

1. Cement case is set flush with finished floor.
2. Set cement case with closer in floor and block in position.
3. Case should be parallel with center line of door.
4. **CEMENT CASE SHOULD BE LEVEL.** Place levels per Illustration.
5. Grout in cement case with closer. Cement should not get between closer and case.

LEVEL IN BOTH DIRECTIONS



# 50 Series Floor Closer

Center Hung, Single or Double Acting, Non-Handed

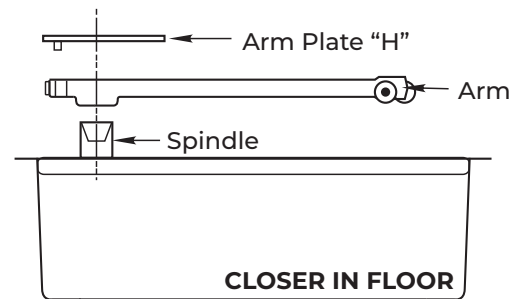
## Installation Instructions (cont.)

### C. Install Top Pivot and Closer Arm

1. Install top pivot in door per template.
2. Install top pivot in jamb per template.
3. Centerline of pivot pin should line up with centerline of spindle.
  - Use plumb line to assure accuracy.
  - If center lines don't line up, loosen the four (4) hold down screws and reposition closer.
  - Tighten hold down screws closest to spindle first. Then tighten screws at cylinder end.

**NOTE:** Closer must be lifted approx. 1/8" before repositioning.

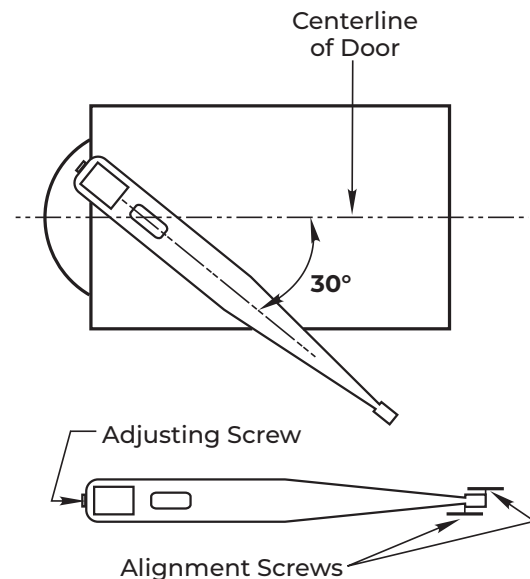
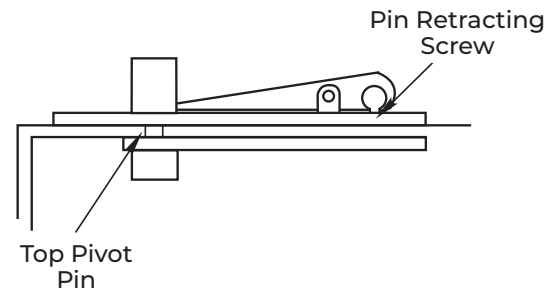
4. Mortise door for arm, arm plate H, and wood door arm plate. Refer to "Template" on page 1.
5. Drill two 5/8" (16mm) dia. holes for the arm alignment screws.
6. Drill a 3/8" (10mm) hole at heel edge of door for the adjusting screw.
7. Install the arm, arm plate H, and shims (if required). Attach the arm alignment screws and washers to hold the arm in place.



### D. Hang Door.

**CAUTION:** Closer is shipped with "valve" screws down. **DO NOT FORCE VALVE DOWN.**

1. Close both valve screws. NEVER FORCE VALVE SCREW DOWN AS THIS WILL DAMAGE TIP SEATING.
2. With arm on spindle, turn spindle until arm is in 30° open position (see illustration).
3. Set door on spindle. DO NOT ATTEMPT TO CLOSE DOOR.
4. Align two portions of top pivot and turn pin retracting screw clockwise to engage top pivot pin.
5. Open door to 60° or more and turn valve screws counter-clockwise. Door will then close.
6. If necessary, turn adjusting screw at bottom of heel edge of door to equalize side jamb clearances.
7. Adjust arm alignment screws equally from each side to center door in doorway.



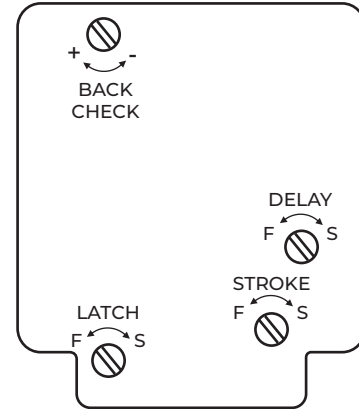
The ASSA ABLOY Group is the global leader in access solutions. Every day we help people feel safe, secure and experience a more open world.

## Closer Adjustment

Closing speeds can be adjusted to suit local conditions and requirements.

The label on the closer face designates the purpose of each adjustment screw. Adjustments are for speed control.

- The stroke valve allows adjustment from open to 15°.
- The latch valve allows adjustment from 15° to closed position.
- **IMPORTANT:** Back check valve option must be adjusted to vary resistance from light to firm at 70° of door opening.
- The delay valve option allows closing speed adjustment from open position to 65°.



Technical Product Support:  
Monroe, NC 28112 USA  
Phone: 877.974.2255 ext: 2  
Techsupport.NortonRixson@assaabloy.com  
NortonRixson.com

Norton Rixson is a brand associated with ASSA ABLOY Accessories and Door Controls Group, Inc., an ASSA ABLOY Group company. Copyright © 2005, 2009, 2024, 2025, ASSA ABLOY Accessories and Door Controls Group, Inc. All rights reserved. Reproduction in whole or in part without the express written permission of ASSA ABLOY Accessories and Door Controls Group, Inc. is prohibited

Approved 2025-09-11