

# 7500 Series Slide Track Door Closer

Models 7500ST, PS7500ST, 7500ST-H, and PS7500ST-H

Pull or Push Side, Non-Hold Open or Hold Open

Installation Instructions

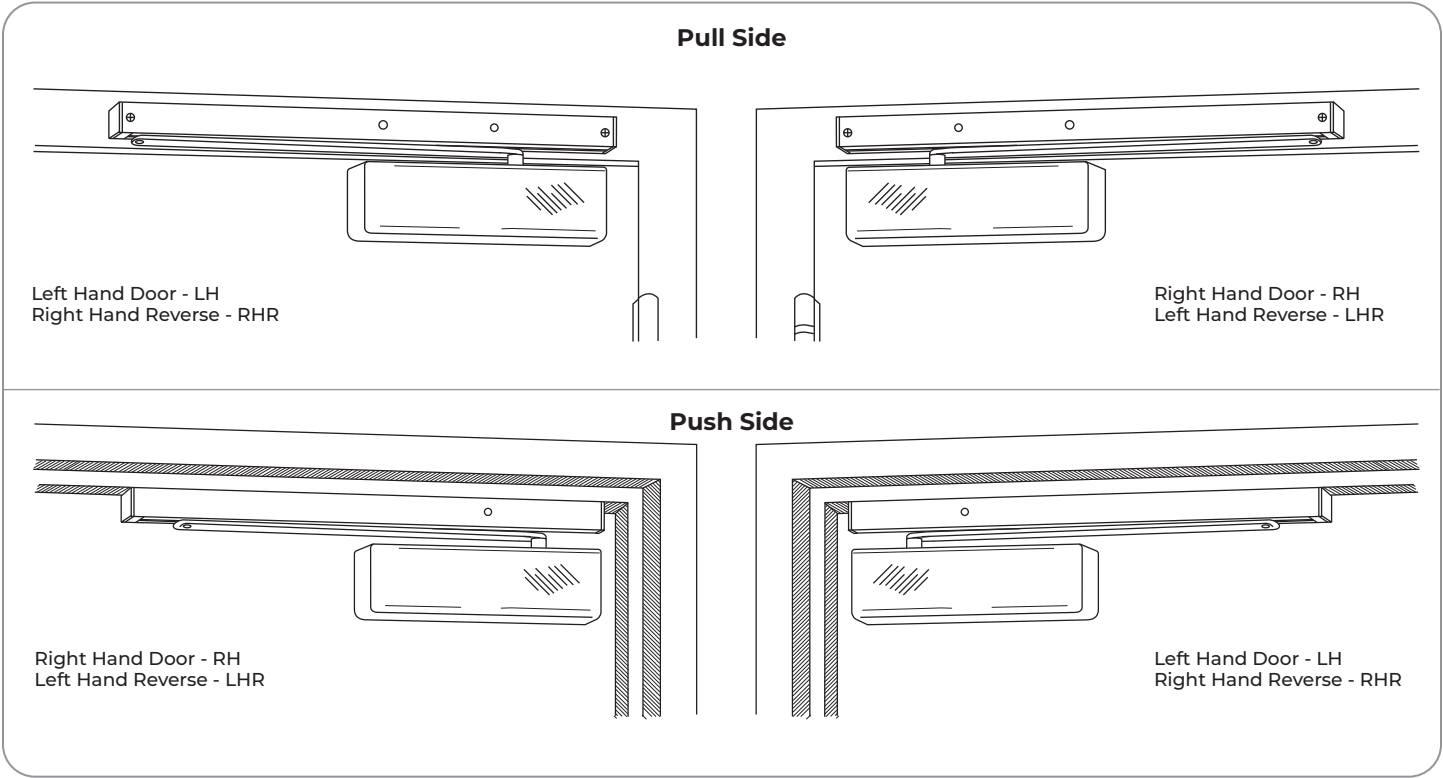


**⚠ WARNING**

This product can expose you to lead which is known to the state of California to cause cancer and birth defects or other reproductive harm. For more information go to: [www.P65warnings.ca.gov](http://www.P65warnings.ca.gov).

READ AND FOLLOW ALL INSTRUCTIONS.  
SAVE THESE INSTRUCTIONS.

**CAUTION**  
An incorrectly installed or improperly adjusted door closer can cause property damage or personal injury. These instructions should be followed to avoid the possibility of misapplication or misadjustment.



**To Determine Hand of Door:**

Right Hand Reverse

Left Hand Reverse

**LEFT HAND DOOR**

**RIGHT HAND DOOR**

**To Identify the Model:**

Older models may be stamped "1-6", "1-4" or "2-6". They can be replaced with a newer "1-6" model which has no stamp.

Standard 7500ST = 4 valves  
Delayed Action 7500STDA = 5 valves

**Tools Needed**

Tape Measure	Punch	Pencil	Phillips Screwdriver	Adjustable Wrench
Drill	AND #7 1/4-20 for Metal		3/16" for Wood	AND 9/32" 3/8" for Either Nut & Bolt Option

# Models 7500ST, PS7500ST, 7500ST-H, and PS7500ST-H

Pull or Push Side, Non-Hold Open or Hold Open

**ATTENTION:**

An incorrectly installed or improperly adjusted door closer can cause property damage or personal injury. These installation instructions should be followed to avoid the possibility of misapplication or misadjustment.

- For special applications, a separate door and frame preparation template is packed with these instructions. Use these instructions for installation sequence and closer adjustments only.
- 7500 Series closing force is adjustable from 1-6 as outlined in ANSI Standard A156.4. When closer is adjusted to conform to ADA reduced opening force requirements (5 lbs max.) for interior doors, it may not have adequate closing force to reliably close and latch door. Charted power adjustments in instructions are recommended where possible, to ensure proper door control.
- Adjust closing time speed between 3 - 7 seconds from 90° - 0°.
- These door closers should NOT be installed on exposed side (weather side) of exterior doors.
- Minimum top rail of door with frame stop for PULL Side mount is 3-1/2" (89mm) without drop plate; 2-5/8" (67) with 7786JP drop plate. Minimum top rail of door with frame stop for PUSH Side mount is 6" (152mm) without drop plate; 2-5/8" (67) with 7786JP drop plate.
- Doors should be hung on ball bearing or anti-friction hinges.
- A separate door stop is recommended.
- Always consult door/frame manufacturer for fastener compatibility.
- Door and frame must be properly reinforced.
- Dimensions are given in inches (millimeters).

**Included Components**

**Optional Components**

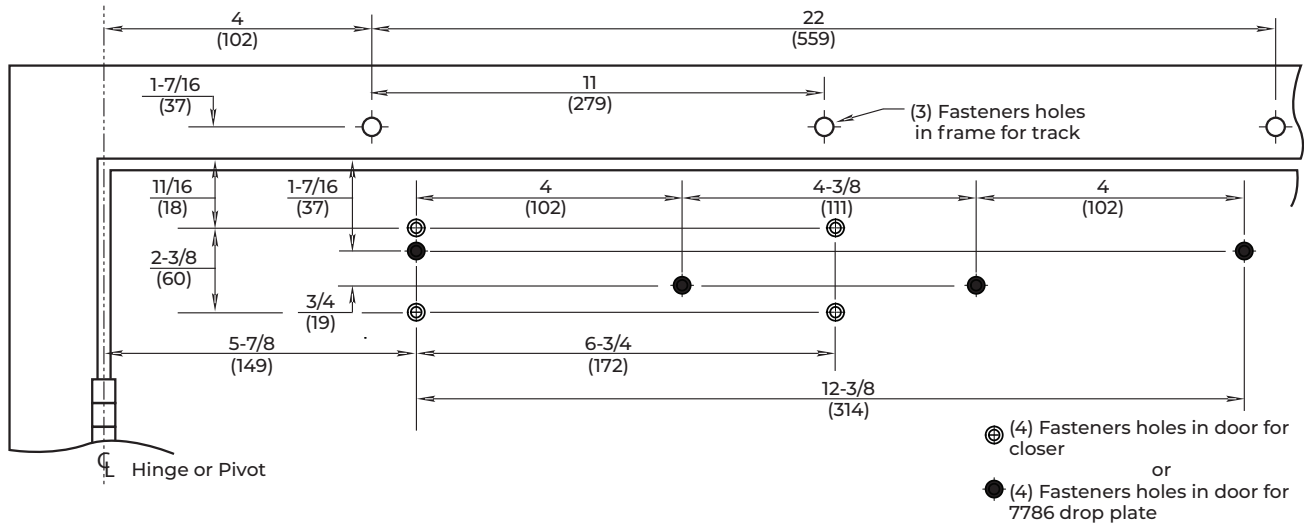
7786JP Drop Plate

	Mounting Hardware	Door or Frame	Drill
	<b>Track:</b> 1/4-14 x 1-1/2 Flat Head Self Drilling Screw	Wood	3/16" (4.76mm)
		Aluminum or Metal	no drill required
	<b>Track:</b> 1/4-14 x 3 Flat Head Self Drilling Screw	Wood	3/16" (4.76mm)
		Aluminum or Metal	no drill required
	<b>Track:</b> 1/4-20 x 1-1/2 Oval Head Machine Screw	Metal	Drill #7 (.201 dia. or 5.10mm) Tap 1/4-20
	<b>Closer:</b> 1/4-20 x 3 Flat Head Machine Screw	Hollow Metal	9/32" (7.00mm) thru 3/8" (9.50mm) door face opposite to closer
	<b>Closer or Track:</b> Sleeve Nut and Bolt (SNB) (optional)	Aluminum or Wood	3/8" (9.50mm) thru
		All	9/32" (7.00mm) thru 3/8" (9.50mm) dia. x 3/8" (9.500mm) deep, door face opposite to closer

# Models 7500ST, PS7500ST, 7500ST-H, and PS7500ST-H

Pull or Push Side, Non-Hold Open or Hold Open

## Pull Side Installation



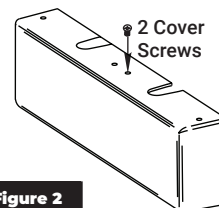
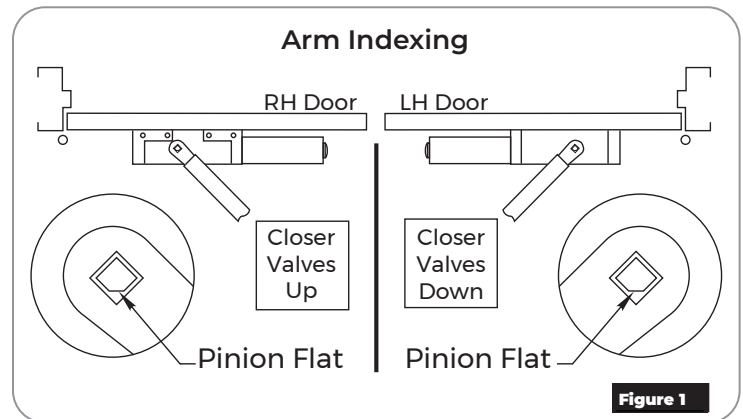
## Installation Sequence:

1. Use template to locate holes on door and frame:
  - four (4) on door for closer or drop plate
  - three (3) on frame face for track assembly
2. Prepare door and frame for fasteners using chart on page 2 and set the closer power for door size using chart on page 5.
3. Fasten closer body to door with power adjustment nut toward lock edge of door and with valves UP for Right Hand door valves DOWN for Left Hand door
4. Fasten slide track to frame face with open side facing down and spring buffer end toward hinge edge of door.
5. Adjust arm to shortest length and install 9/64" hex drive socket head screw from screw pack.
6. Place slide arm on pinion shaft using Arm Indexing instructions. (Figure 1)
7. Secure arm with arm washer and arm screw.
8. Insert arm stud into slide block in track assembly. Secure by pushing in on retainer clip that extends from slide block in track, until it is flush with slide block.
9. Install cover (Figure 2) or make adjustments.



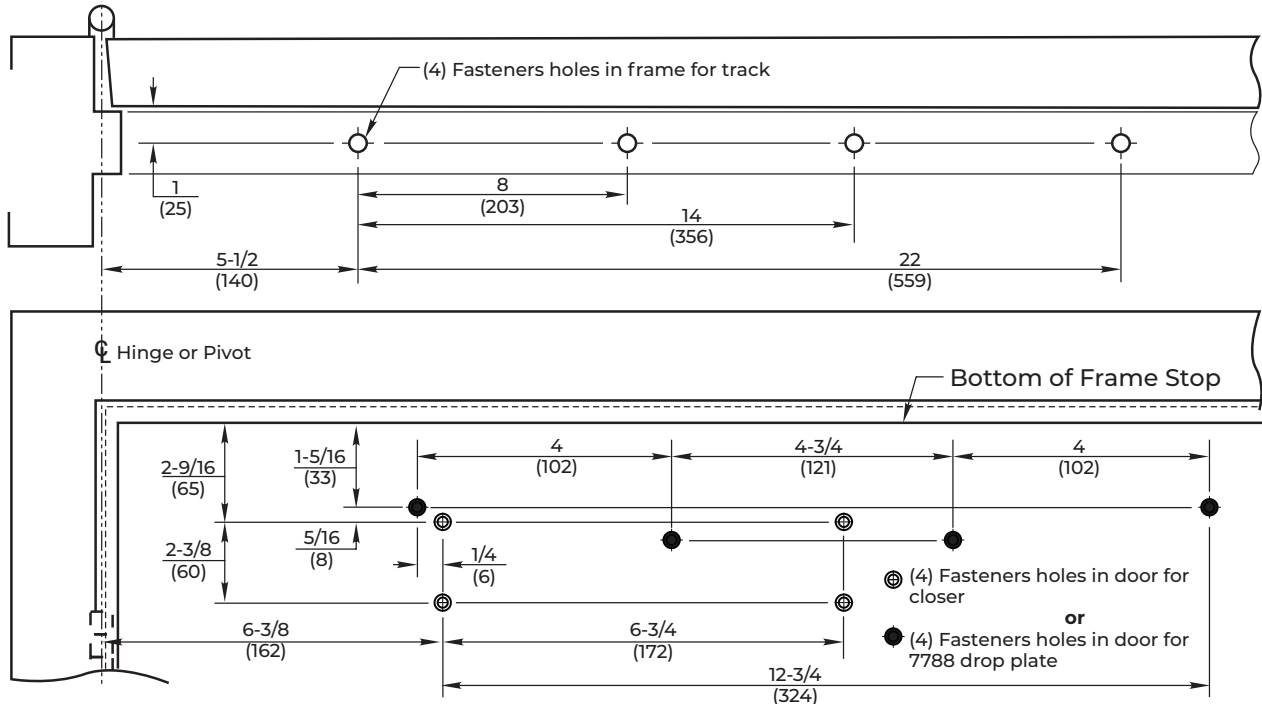
**IMPORTANT:** From centerline of hinge to end of track is 26-1/2" (673mm)

- Right hand door shown
- Do not scale drawing
- Dimensions are given in inches (mm)
- Min. ceiling clearance for unit is 2" (50mm) from frame rabbet:
  - 110° Max. – Non-Hold Open with Spring Buffer
  - 180° Max. – Non-Hold Open without Spring Buffer
  - 110° Max. – Hold Open



● Go to page 5 for closer adjustments.

## Push Side Installation



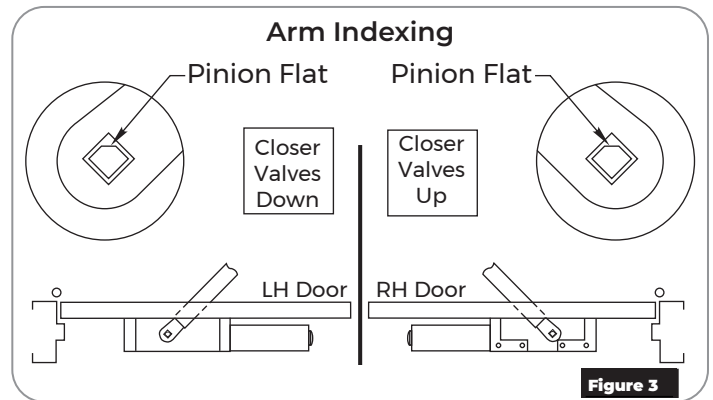
### Installation Sequence:

1. Use template to locate holes on door and frame:
  - four (4) on door for closer or drop plate
  - four (4) on frame soffit for track assembly
2. Prepare door and frame for fasteners using chart on page 2 and set the closer power for door size using chart on page 5.
3. Fasten closer body to door with power adjustment nut toward lock edge of door and with:
  - valves UP for Right Hand door
  - valves DOWN for Left Hand door
4. Fasten slide track to frame soffit with open side facing down and spring buffer end toward hinge edge of door.
5. Adjust arm to shortest length and install 9/64" hex drive socket head screw from screw pack.
6. Place slide arm on pinion shaft using Arm Indexing instructions. (Figure 3)
7. Secure arm with arm washer and arm screw.
8. Insert arm stud into slide block in track assembly. Secure by pushing in on retainer clip that extends from slide block in track, until it is flush with slide block.
9. Install cover (Figure 4) OR make adjustments.

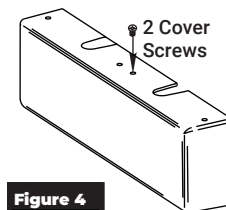


**IMPORTANT:** From centerline of hinge to end of track is 28" (711mm)

- Left hand door shown
- Do not scale drawing
- Dimensions are given in inches (mm)
- Maximum door opening:
  - 100° Max. – Non-Hold Open with Buffer in Track
  - 125° Max. – Non-Hold Open without Buffer in track; auxiliary door stop required
  - 100° Max. – Hold Open



**Figure 3**



**Figure 4**

● Go to page 5 for closer adjustments.

# Models 7500ST, PS7500ST, 7500ST-H, and PS7500ST-H

Pull or Push Side, Non-Hold Open or Hold Open

## Adjustments

### Door Stop Angle or Hold Open Angle (Figure 5)

Remove 9/64" hex drive socket head screw from arm. Open door to desired angle and install hex-drive socket head screw into hole in adjusting rod that is aligned with hole in adjusting tube.

### On/Off Hold Open Feature (Figure 6)

Slotted screw, accessible through hole in face of track, engages or disengages hold open feature with 1/4 turn of screw. Hold open units are not permitted in fire door assemblies.

### Hold Open Power Adjustment (Figure 6)

If more hold open power is required, power may be increased by turning adjustment screw in end of the track nearest hinges. Use 9/64" hex wrench provided and rotate adjustment screw clockwise to increase holding power.

### Closing Power (Figure 7)

7500ST Models are fully adjustable for proper sizing (Figure 7). To adjust closer power, install closer per instructions with proper pre-load applied to arm then adjust spring power.

**NOTE:** Power adjustment will not work properly if closer spring is not pre-loaded.

### Closing Cycle – Hydraulic Control (Figure 8)

#### Standard Closer Only

- Valve "L" controls door speed in Latch range.
- Valve "S/D" controls door speed in Sweep range.

#### Delayed Action Closer Only

- Valve "L" controls door speed in Latch range.
- Valve "S" controls door speed in Sweep range.
- Valve "S/D" controls door speed in Delay range.

### Opening Cycle – Hydraulic Control (Figure 8)

- Valve "B" cushions (slows) door opening in backcheck range.
- Valve "P" allows "backcheck" to begin later in opening cycle.

#### Opening Angle Adjustment

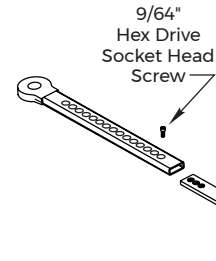


Figure 5

#### Hold Open Power Adjustment

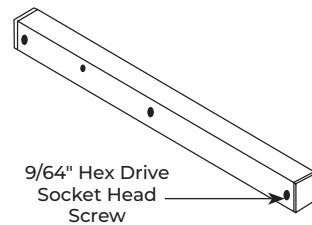


Figure 6

#### Power Adjustment Chart

DOOR	Number of Full Clockwise Turns Required			
	MAXIMUM DOOR SIZE			
	30" (76cm)	36" (91cm)	42" (107cm)	48" (122cm)
Interior Door	0	2	5	8
Exterior Door	2	5	8	11

**NOTE:** Maximum of 16-1/2 turns (360°) of Power Adjustment Nut.

Figure 7

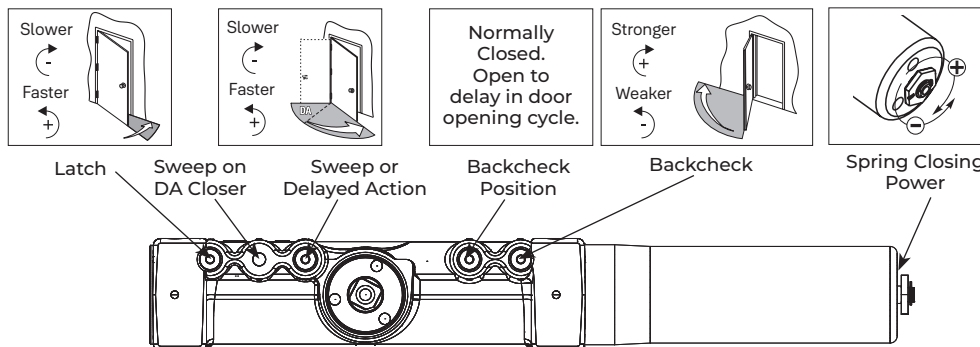


Figure 8



Use provided hex wrench to turn valves. **NEVER** force valves out of closer. **NEVER** completely close backcheck valve.

Door must be open to adjust spring closing power. **Do not use a power drill. Warranty will be void.**

The ASSA ABLOY Group is the global leader in access solutions. Every day we help people feel safe, secure and experience a more open world.

---



**ASSA ABLOY**

---

Technical Product Support:  
Monroe, NC 28112 USA  
Phone: 877.974.2255 ext: 2  
Techsupport.NortonRixson@assaabloy.com  
NortonRixson.com

Norton Rixson is a brand associated with ASSA ABLOY Accessories and Door Controls Group, Inc., an ASSA ABLOY Group company.  
Copyright © 1991, 2011, 2024, 2025, ASSA ABLOY Accessories and Door Controls Group, Inc. All rights reserved. Reproduction in whole or in part without the express written permission of ASSA ABLOY Accessories and Door Controls Group, Inc. is prohibited.

**Approved 2025-02-26**

80-9377-0510-020 Rev 4 02/25