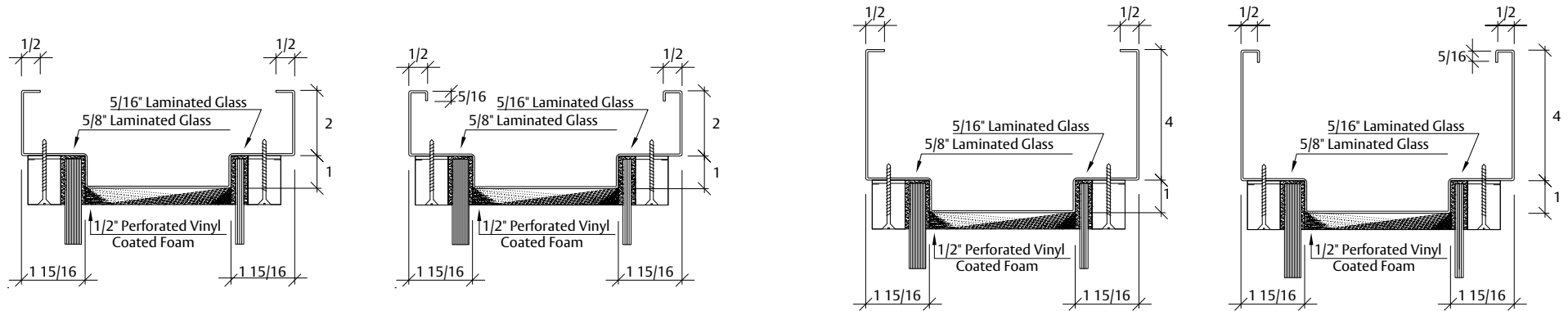
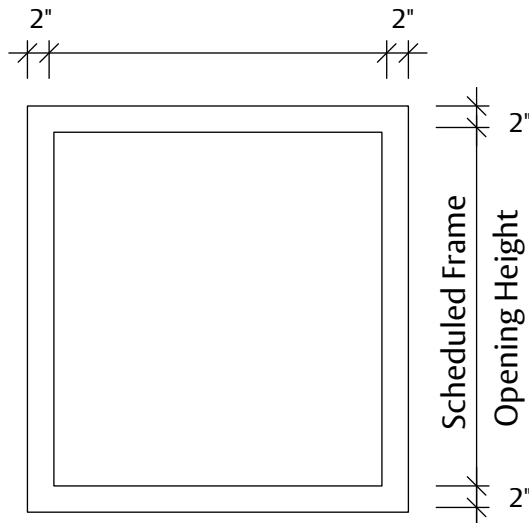


ASSA ABLOY Model DG50 - STC 50 - SOUND WINDOW FRAME ASSEMBLY



SOUND WINDOW FRAME ASSEMBLY MODEL NO. DG50 - STC 50

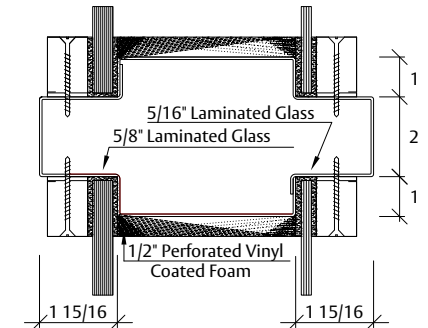
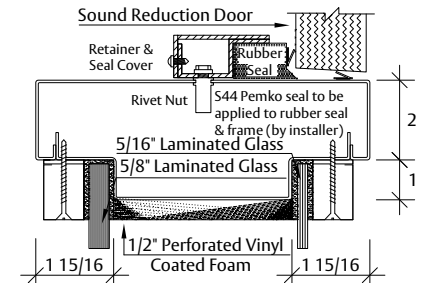
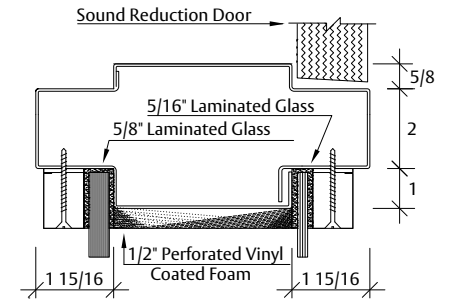
TYPICAL ELEVATION Scheduled Frame Opening Width



Experience a safer
and more open world

SPECIFICATIONS:

1. All exposed surfaces of frame to receive one coat of rust inhibitive prime paint.
2. Assembly is equipped with sound window frame, gasketing (silicone glazing channel) and crated for shipment.
3. Frame weight is 16.2 pounds per square foot. Doubled wood studs or 16 gauge metal studs are strongly recommended to support the weight of the assembly.
4. Frames are to be formed of no less than 14 Gauge sheet steel with corners mitered, continuously welded and ground smooth.
5. Glass provided by ASSA ABLOY and shipped loose. Installed by others in field.
 - 5.1. Exterior glazing consists of 5/8" laminated glass which was 3/8" glass, .030 Laminate, and 1/8" Glass.
 - 5.2. Interior glazing consists of 5/16" Laminated glass which was 5/32" Glass, .030 Laminate, and 1/8" Glass.
6. Frame to be grouted in field by others.
7. 1" x 1-1/2" Removable Stops set with 2" Self Drilling Flat Head Screws on 1/16" Thick Self-Adhesive Vibration Dampening Vinyl Installed on Sill, Header, and Jambs.



FINISH:	STANDARD PRIMER PAINT; TESTED IN CONFORMANCE WITH ANSI A250.10
ACOUSTICAL PERFORMANCE	WINDOW SYSTEM TESTED IN CONFORMANCE WITH ASTM E2235, ASTM E1332 ASTM E90 & E413, FULLY OPERABLE, STC AS NOTED ABOVE. DOOR SYSTEMS ARE IN COMPLIANCE WITH HMMA 865 & SDI-128 SPECIFICATIONS.