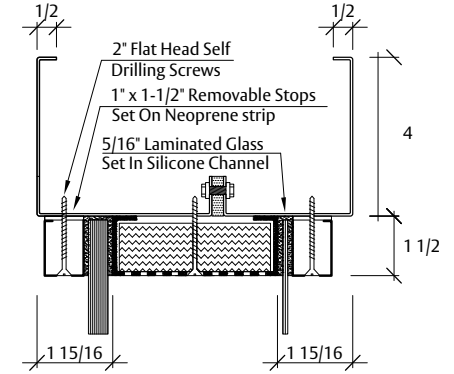
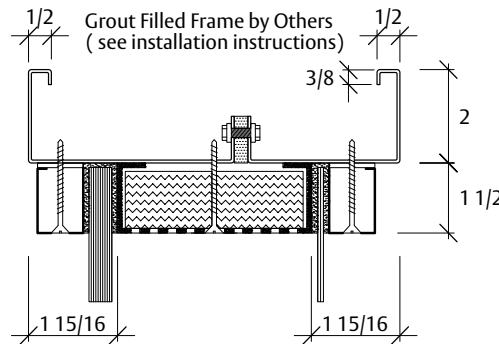
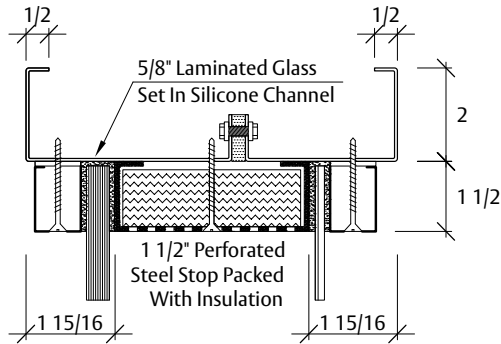


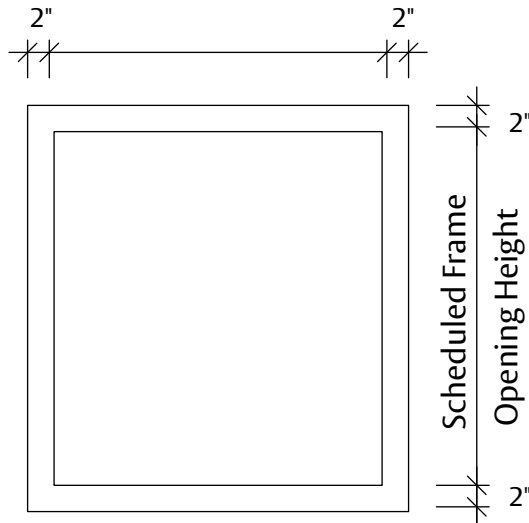
ASSA ABLOY Model NO. DG57 - STC 57 - SOUND WINDOW FRAME ASSEMBLY

Standard Frame Profiles: Notes shown apply to all frame profiles



SOUND WINDOW FRAME ASSEMBLY

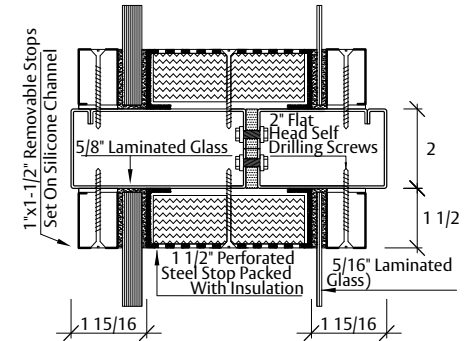
TYPICAL ELEVATION
Scheduled Frame
Opening Width



SPECIFICATIONS:

1. All exposed surfaces of frame to receive one coat of rust inhibitive prime paint.
2. Assembly is equipped with sound window frame, gasketing (silicone glazing channel) and crated for shipment.
3. Frame weight is 28.3 pounds per square foot. Doubled wood studs or 16 gauge metal studs are strongly recommended to support the weight of the assembly.
4. Frames are to be formed of no less than 14 Gauge sheet steel with corners mitered, continuously welded and ground smooth.
5. Glass provided by ASSA ABLOY and shipped loose. To be installed by others in field.
6. Frames must be fully grouted.
7. Perforated stop packed with 5# density standard fiberglass batt insulation.

Mullion for STC Visions



NOTE: STC57 Sidelite frames are not available. STC50 is the max. with a sidelite. (see model DG50)

Experience a safer
and more open world

FINISH:	STANDARD PRIMER PAINT; TESTED IN CONFORMANCE WITH ANSI A250.10
ACOUSTICAL PERFORMANCE	WINDOW SYSTEM TESTED IN CONFORMANCE WITH ASTM E2235, ASTM E1332 ASTM E90 & E413, FULLY OPERABLE, STC AS NOTED ABOVE. DOOR SYSTEMS ARE IN COMPLIANCE WITH HMMA 865 & SDI-128 SPECIFICATIONS.