

VIDA

An aerial photograph of a tall, modern skyscraper with a green facade, surrounded by a cityscape. The building is the central focus, with a dense urban environment visible in the background. The sky is a mix of blue and white, suggesting a clear day with some light clouds. The overall scene conveys a sense of modern urban development and sustainability.

THE FUTURE OF  
URBAN LIVING

LIVE@VIDA



A MODERN-DAY  
MASTERPIECE



OFFERING

UNOBSTRUCTED  
VIEWS FROM EVERY  
APARTMENT.

---

WE HAVE ENSURED EACH  
HOUSE HAS THEIR OWN  
SHARE OF GREENS WITH  
SUSTAINABLE GREEN  
BUILDING FACADE

---





AMENITIES THAT SPREAD ACROSS MORE THAN  
65000 SQUARE FEET ALONG WITH UNIQUE  
STATE OF THE ART SKY PARK SPREAD ACROSS OVER  
18000 SQ FEET. 

---



IMAGINE WAKING UP FROM YOUR DREAMS  
ONLY TO WALK THROUGH CLOUDS.



A large, stylized letter 'W' is positioned on the left side of the page. It is composed of four overlapping, slightly offset, light blue lines that create a sense of depth and movement. The 'W' is set against a solid, muted blue background.

WORK@VIDA

# CO-WORKING SPACE TO CREATE AND COLLABORATE

---





THE FUTURE OF  
WORK NOW AT  
YOUR DOORSTEP.

---



WORK, COLLABORATE, OR  
FIND A QUIET SPOT TO FOCUS  
ALL THE TOOLS TO  
SUCCEED, WITH NO  
COMMUTE

---

EAT@VIDA

MAKE THE MOST OF OUR  
EXCLUSIVE RESIDENTS' ONLY  
COMMUNITY DINING SPACE.





A UNIQUE OPPORTUNITY TO  
MINGLE, MAKE NEW  
FRIENDS OR SIMPLY  
SHARE A CONVERSATION

GRAB A CUPPA FROM OUR  
INDOOR CAFE.

---







PLAY@VIDA



WE'RE SO MUCH MORE THAN A RESIDENCE  
MAKE THE MOST OF OUR SKY PARK  
WITH JOGGING TRACK, A YOGA DECK,  
MEDITATION DECK, A SIZABLE EVENT  
AREA. (THIS IS AT SKY PARK)



A photograph of a modern, well-lit resident gym. The room features a long row of treadmills on the left side, with two large exercise balls in the foreground. In the center and right, there are rowing machines and other fitness equipment. Large windows on the left side provide ample natural light, and a glass wall on the right reflects the interior. The floor is made of light-colored wood.

## RESIDENT GYM, SWIMMING POOL AND SPA (FIRST AND GROUND FLOOR)

QUINTESENTIALLY

CONCIERGE SERVICES  
TO ALL MEMBERS.



LOCATED

---

AT VIDA YOU ARE  
AT THE HEART OF  
EVERYTHING

VIDA



# GIFT CITY

GIFT City is a central business hub with state-of-the-art infrastructure and first of its kind operational smart city in India.

886

Acres of Land

62 MN

Sq Ft Built up

22%

Residential Space

67%

Commercial Space

- Ultra-Modern Office spaces, Residential Apartments, Schools
- A state-of-the-art certified TIER IV Green Data Centre
- Proposed Hospital, Five-star Hotels, Business Club, various recreational amenities
- Automated Waste Collection System (AWCS)
- Zero-discharge city; drinkable water from any tap.
- 99.999% power reliability.
- District Cooling System has been introduced for the first time in India for commercial use. The chilled water will be supplied till building level, and it will reduce energy and maintenance cost, and improve quality.
- In the vicinity of GIFT City one can find Clubs, plethora of Hotels, Fine dining Restaurants, Theaters, Mega Malls, Supermarkets, Places of worships, Historic Temples, Park etc.
- Under-ground Utility Tunnel



## GIFT GAME CHANGERS



Global financial eco system thru implementation of IFC.



Single window clearance for financial units at IFC.



Anticipated employment through aircraft leasing, ship leasing, insurance, AIFs, MFs, Stock Exchanges, Bullion Exchange, Banks, Professionals, Consultants.



Connectivity of Metro rail by 2024



Development of Social infrastructure by 2024



Extension of celebrated Sabarmati Riverfront upto GIFT City



State of the Art Central Green Park



## OCCUPANTS



## CLUSTER



## STUDIO



RERA CARPET AREA 483 Sq.ft.



1BHK



RERA CARPET AREA 529 Sq.ft.



## 2BHK



RERA CARPET AREA 871 Sq.ft.



3BHK



RERA CARPET AREA 1180 Sq.ft.



DESIGNED BY  
THE ACCLAIMED

**blocher partners**





## Concept

Our vision was to provide a landmark for contemporary living with aspects of sustainability and a green and colourful vibe. The towers will be an identity giving a great standing position in the urban context for this upcoming socio-economic quarter and the bespoke apartments will cater to the needs of the cosmopolitan inhabitants. What is most important for us is that the spaces will be not only highly functional and efficient but also happy, open, well-lit and take advantage of the amazing views that the location has to offer.

A colour was added to give a vibrancy in the dialogue between the elegant horizontal white lines and the natural greens growing and hanging over. This also gives a sense of recognition and visual connection to the users. The horizontal bands give a strong structure to the building with an elegant feel where planters are added and balconies pop out which also gives an additional advantage of shading of the outer wall of the apartments.

## Architecture

The development is a composition of 2 towers measuring 117m connected by 6 bridges. The vertical green which is integrated in the façade adds a positive vibe not only in the urban context to the building as a strong standing landmark, but also to the user with direct usage not only of the amazing views but also the greens which are wrapping this building. In each of the towers the ground and first floor are for common spaces and amenities, and floors above this are a mix of 1, 2 and 3 bedroom apartments for a vivid combination of singles, couples, and everyone can find something according to their needs.

The bridges between the buildings and the whole roof top terraces are valuable additional green spill out spaces made accessible to all users. The area of the green bridges will connect the two towers like a green joint thus providing a visual delight to the passers-by.



Hartmut Wurster

Blocher Partners India is the Indian presence of the renowned Germany-based architecture and design firm Blocher Partners, active globally. Hartmut Wurster arrived 11 years ago and setup the office in Ahmedabad. Our diverse team of architects, graphic designers, interior designers, communication specialists, environmental planners and product designers is spread across Stuttgart, Berlin, Mannheim and Ahmedabad. We are able to offer our transdisciplinary service by combining architecture, urban planning, interior design, product design and communication.

STATE-OF-THE-ART SKY PARK

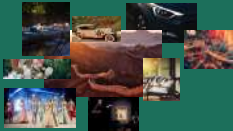
65,000  
Sq. Ft. +  
area dedicated  
purely to amenities

Contemporary connecting bridges

Jogging track @  
111 Mt.



Q U I N T E S S E N T I A L L Y  
T H E W O R L D ' S L E A D I N G  
M E M B E R S - O N L Y C O N C I E R G E C L U B



Quintessentially Lifestyle Members have access to thousands of benefits and privileges with the best hotels, restaurants, clubs, spas, luxury products and practical services across the globe.

- Quintessentially is offering concierge service to all members.
- The world's leading private members club and luxury lifestyle group.
- Founded in the UK in 2000 as a private members club and concierge service and operational in India since 2010
- Lifestyle assistance available 24 hours/365 days a year.
- Over 1500 concierge experts with multi-lingual capabilities.
- Physical offices in over 60 cities worldwide and 32 sister companies
- Access to the very finest of products, services and benefits.
- Dedicated managers offering proactive service to enhance your lifestyle
- Unrivalled knowledge and experience.
- Local expert insider knowledge.

**5**  
Global Hubs

**33**  
Global Offices

**700+**  
Team Members

Prominent  
business group  
with vintage of  
**32+ years**

Satisfactory  
delivery of

**50+**  
**Projects**



Winner of various  
Real-estate related  
awards

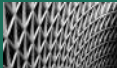
---

Already delivered  
20,000+ homes + Currently  
constructing 10,000+  
homes at Group Level



Successful execution of

**5+ Mn sq ft**





## NILA SPACES LIMITED

1st Floor, Sambhaav House, Opp: Chief Justices'  
Bungalow, Bodakdev, Ahmedabad - 380015.

CIN:L45100GJ2000PLC083204

1800 4199 202

info@nilaspaces.com

www.nilaspaces.com

Associate Architect



MEPF & BIM



Structural Consultant



Gujarat RERA registration number

PR/GJ/GANDHINAGAR/GANDHINAGAR/GIT Urban Development Authority/RN205AA10105/011022

Gujarat RERA Website – <https://gujrera.gujarat.gov.in/>

### DISCLAIMER

This document is conceptual and not a legal offering by the Company for advertising and is to be used for general information only. Any interested party should verify all the information including designs, plans, specifications, facilities, features, payment schedules, terms of sales etc. independently with the Company prior to consulting any decision for buying in any of the project. The user of the Brochure confirms that he/she has not solely relied on this information for making any buying/purchase in any project of the Company. The visuals and information contained herein marked as 'artistic impression' are being indicative in nature and are for general information purposes only. The visuals contained marked as 'generic image and other visuals /image /photographs are general images and do not have any correlation with the project. The imagery used on the brochures may not represent actuals or may be indicative of aspirability. Photographs of interiors, spaces surrounding sites and location may not represent actuals or may have been slightly enhanced or altered. These photographs may not represent actuals or may be indicative only. Computer generated images, walkthroughs and render images are the artist's impression and are an indication of the actual design. No information given in this brochure creates a warranty or depend the scope of any warranty that cannot be disclaimed under the applicable laws. The information in this brochure is presented as general information and no representation or warranty is expressly or impliedly given as to its accuracy. While enough care is taken by the Company to ensure that information in the brochures are up to date, accurate and correct, the readers / users are requested to make an independent enquiry with the Company before relying upon the same. Nothing in the brochure should be misinterpreted as advertising, marketing, buying, selling or an offer for sale or invitation to purchase a unit in any project by the Company. The Company is not responsible for the consequences of any action taken by the viewer relying on such material information in this brochure without independently verifying with the Company.