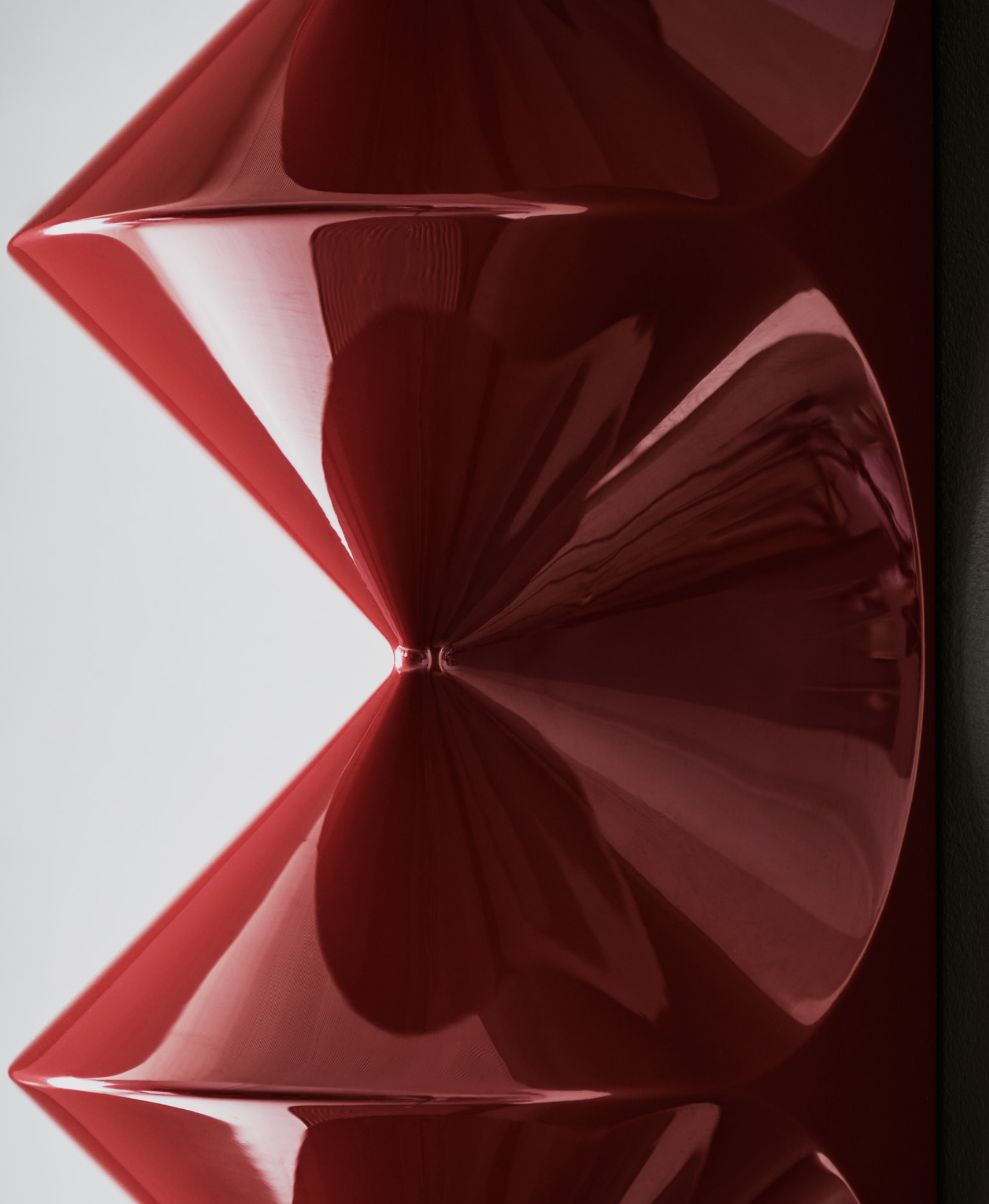


FARRAH SIT

CATALOG





ORA

5 tier sconce

Dimension: 6.25" w x 31" h x 5.5" d

Material: Lacquer Wood

Lamping: E12 Candelabra base

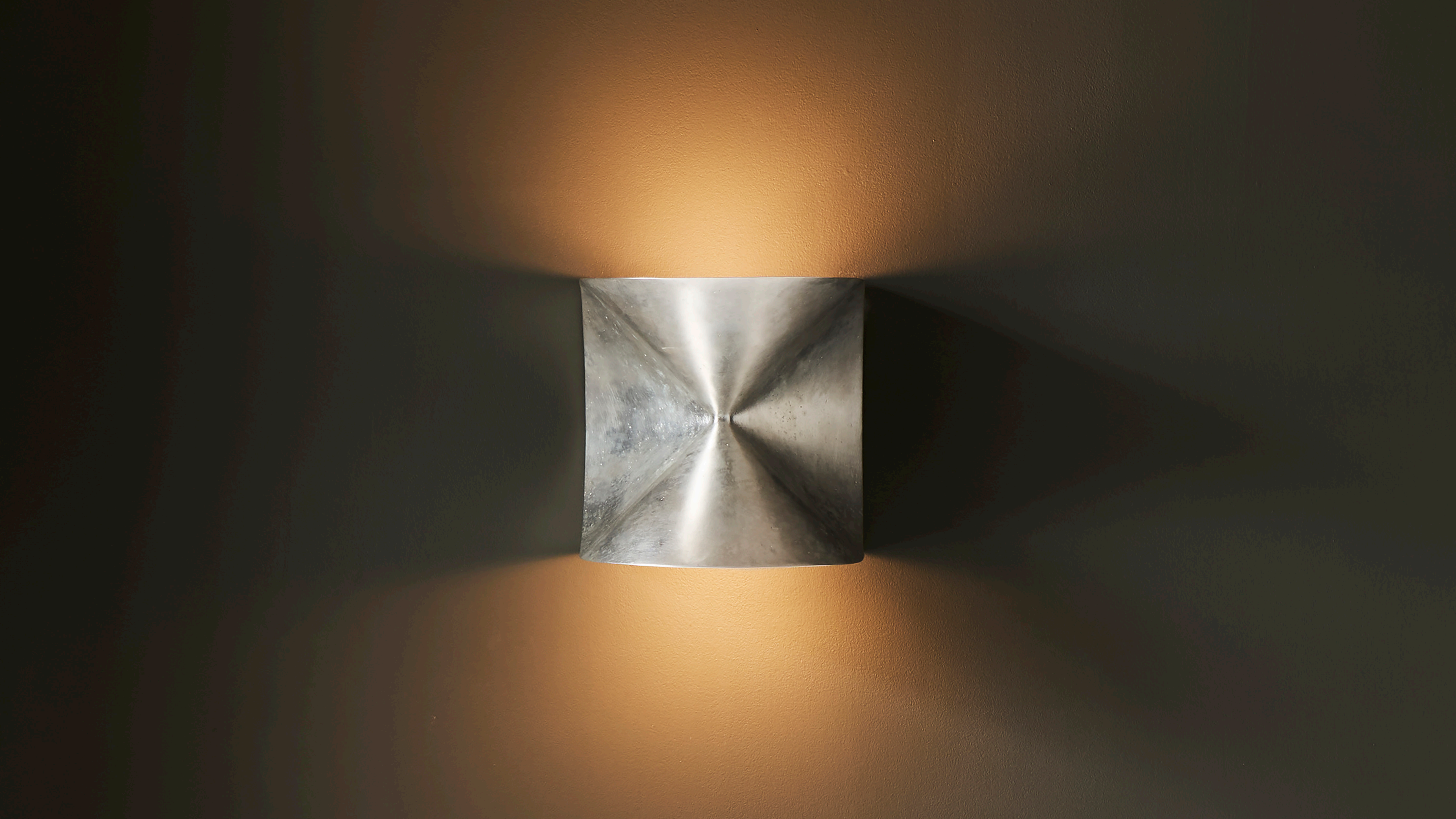
Single sconce

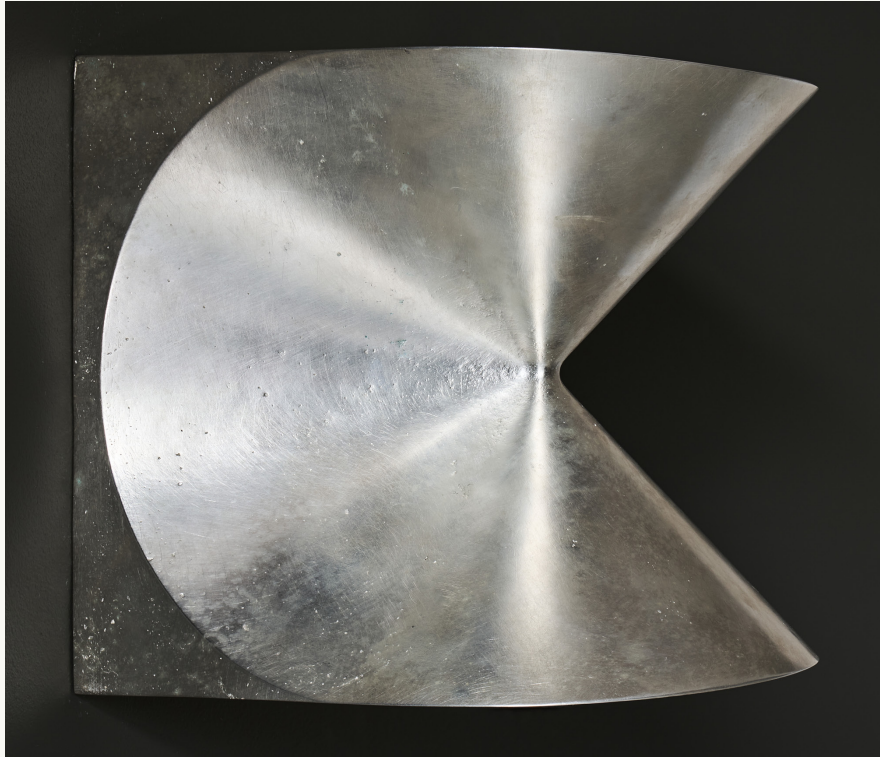
Dimension: 6.5" w x 6.5" h x 6.5" d

Material: Bronze, White Bronze, or Silverplate

Lamping: G9









MOLTEN

Sconce

Dimension: 9.5" w, 9.5" h, 4" d

Material: White Brass

Lamping: LED



MAILLAGE

Chandelier

Dimension: Custom

Material: Satin Nickel, or Colored Lacquer

Lamping: LED







MAILLAGE

Stone sconce

Dimension: 4" w, 24.5" h, 3" d
Material: St. Rafael stone
Lamping: LED

This sculptural wall sconce features generous curves are paired with crisp edges. The repetition of geometry create a three dimensional flow. The sconce snakes up and off the wall, a sculptural lighting piece that's understated, and artifact-like.





SERPENTINE

Sconce

Dimension: 4" w x 4" d x 21" h

Material: Ceramic or Stone

Lamping: G9, LED

Custom marbles available.

SERPENTINE XL

Stone Sconce

Dimension: 4" w x 4" d x 44" h

Material: Moleanos Limestone

Lamping: LED

Custom marbles available.





PLUTO
Stone Sconce

SCORPIO

Ceramic Lamp

Defying gravity, this cantilever table light is a simple repetition of form and displays dynamic views from all sides. This table light is slipcast in ceramic and sit atop a satin brass base.

Dimension: 8" w x 8" d x 20" h

Material: Ceramic and Brushed Brass

Lamping: G9, LED





ARC Sconce

Dimension: 2" w x 2" d x 3.7" h
Material: Ceramic and Satin Brass
Lamping: G9, LED



SATIN KHORA

Chandelier

The Satin Khora Chandelier comprises multiple brass strands each composed of cosmic symbols. Each strand suspends hand-thrown translucent porcelain pendants made in collaboration with Biata Roytburd.

Dimension: 12" diameter pendants

Material: Porcelain and Brass

Lamping: G9, LED









HATHOR

Stone Lamp

Shape-shifting like the moon, this sculptural lamp seems to balance on tiny point from one angle, while twisting to appear as a complete sphere from another. Planes carved from moleanos stone create a continuous form defined in shadow and reflected in a soft ambient light.

Dimension: 9" w x 9" d x 9" h

Material: Stone

Lamping: G9, LED

UNIR Sculpture

A stone sculpture, apparently two, but one in essence.

Dimension: 9" w x 13" d x 9" h
Material: Moleanos Limestone





VAYU

Stone Bath

Realized in Azul Lagoa stone, this sculptural bath embodies a sensual reduction of form. The design transforms the heavy stone with a beguiling levity. Inspirations draw from a dreamlike interpretation of the past from the perspective of the future.

Dimension: Custom

Material: Azul Lagoa Marble

Custom marbles available



GLASS CLUSTER

Pendant

Inspired by sea life, each pendant features an angled opening making each one unique. The pendants hang from twisted cloth covered electrical cord and glow when lit, warmly atmospheric. A mix of glass finishes is shown: frosted, iridescent, and cased white glass. The pendants hang from twisted cloth covered.

Dimension: 9" w x 9" d x 9" h

Material: Handblown Glass

Lamping: G9, LED

PINGALA

Chandelier

Exploring perceptions of gravity, a luminous arc cases a bar of marble, or gives way to and yet suspends a stone wheel. The large pendants made of Carrera marble, neon and brass play with the illusion of weight and strength.

Dimension: 36.5" w x 2" d x 55" h
Material: White Carrera, Neon







IDA Chandelier

Dimension: 2" w x 33.5" d x 28.5" h
Material: White Carrera, Neon, Brass



PULSAR
Candle Holder





FARRAH SIT

Farrah Sit is a New York based designer who focuses on creating strikingly simple objects that speak to their intended purpose. With the ethos of “own less + own well,” Sit works with local artisans and manufactureres with the goal of creating beautiful, functional objects through fair, sustainable production. Her work relects her exacting attention to detail coupled with quiet minimalism.

FARRAH SIT

FARRAHSIT.COM
INFO@FARRAHSIT.COM

MESSAGE: +1 646-470-1121
181 N11 St #205, BROOKLYN, NY 11211